



PLAN PRESENTATION BASICS GENERAL LAYOUT

Project Design Services Unit

June 2019

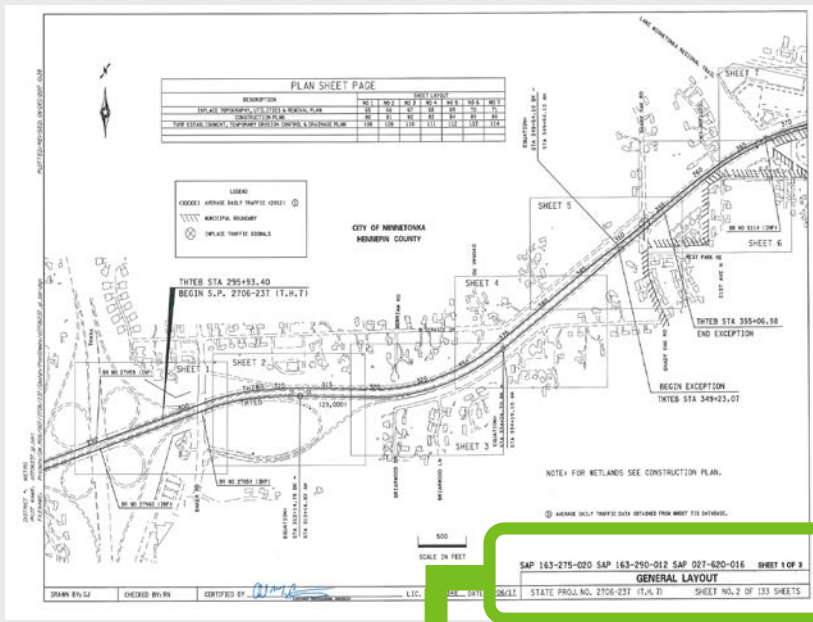
GENERAL LAYOUT

In this section you will be introduced to the basic parts of the general layout sheets.

- These typically follow the title sheet but are before the Statement of Estimated Quantities sheet(s).
- Simpler, more straight forward projects may not need a general layout section in the plan.

PROJECT NUMBER(S)

The project number(s) should be shown in the bottom right corner of the plan sheet. It should include the (TH #) but not the legislative number.

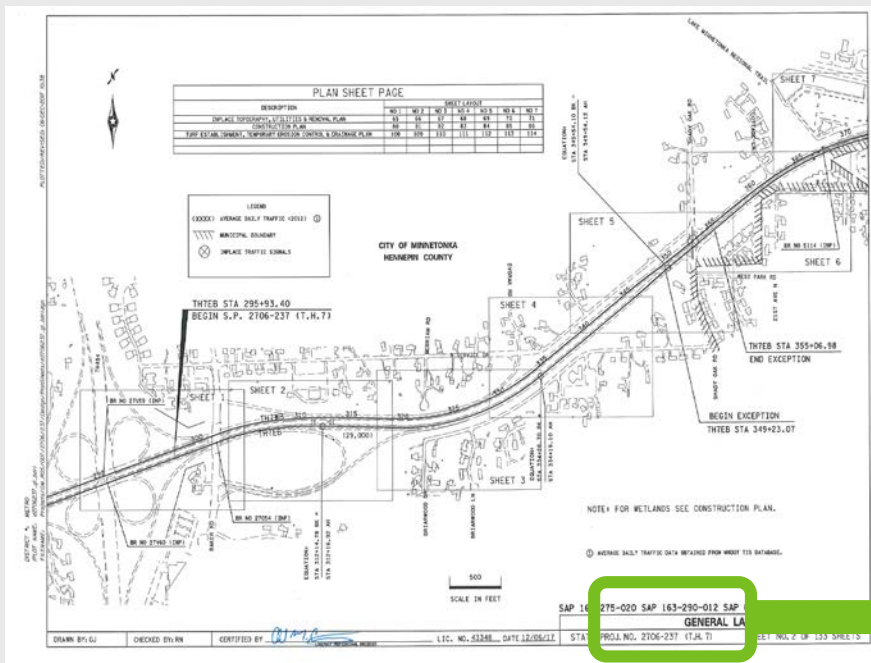


- When there are multiple project numbers as a minimum the PRIME SP number should be shown. It is optional to show all of the SP numbers. The main thing it to be consistent.
- ALL State Aid project numbers must also be shown on every sheet in the bottom right corner.

SAP 163-275-020 SAP 163-290-012 SAP 027-620-016 SHEET 1 OF 3
GENERAL LAYOUT
STATE PROJ. NO. 2706-237 (T.H. 7) SHEET NO. 2 OF 133 SHEETS

SHEET LABEL

The sheet label should be shown in the bottom right corner of the plan sheet. Above the SP # and SHEET number.

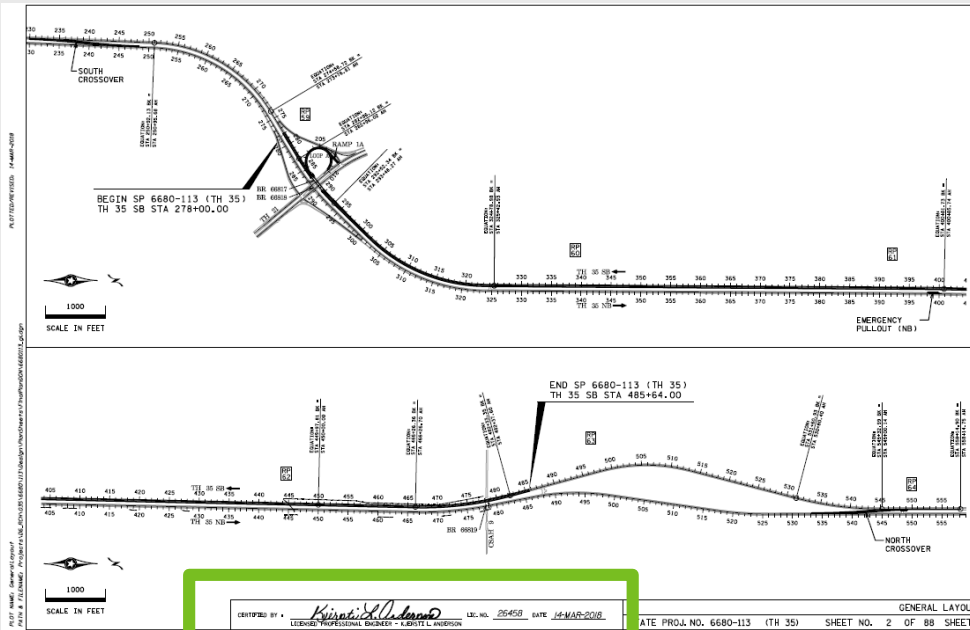


Some designers like to label the sheet sequence. (e.g. Sheet 1 of 3). This is optional.

SAP 163-275-020	SAP 163-290-012	SAP 027-620-016	SHEET 1 OF 3
GENERAL LAYOUT			
STATE PROJ. NO. 2706-237 (T.H. 7)		SHEET NO. 2 OF 133 SHEETS	

SHEET SIGNATURE

Each general layout sheet must be signed. This is typically located in the bottom center of the sheet just left of the SP #.



This will include the Design Engineers (same person who signed the plan title sheet). It will include....

- Printed name
- Signature
- License Number
- Date



SHEET SIGNATURE (Continued)

A different signature block will be used if these are signed by an Engineer different than the one who signed the title sheet. This will require the Board of AELSLAGID signature language which includes...

- The certified by language
- Printed name
- Signature
- License number
- Date

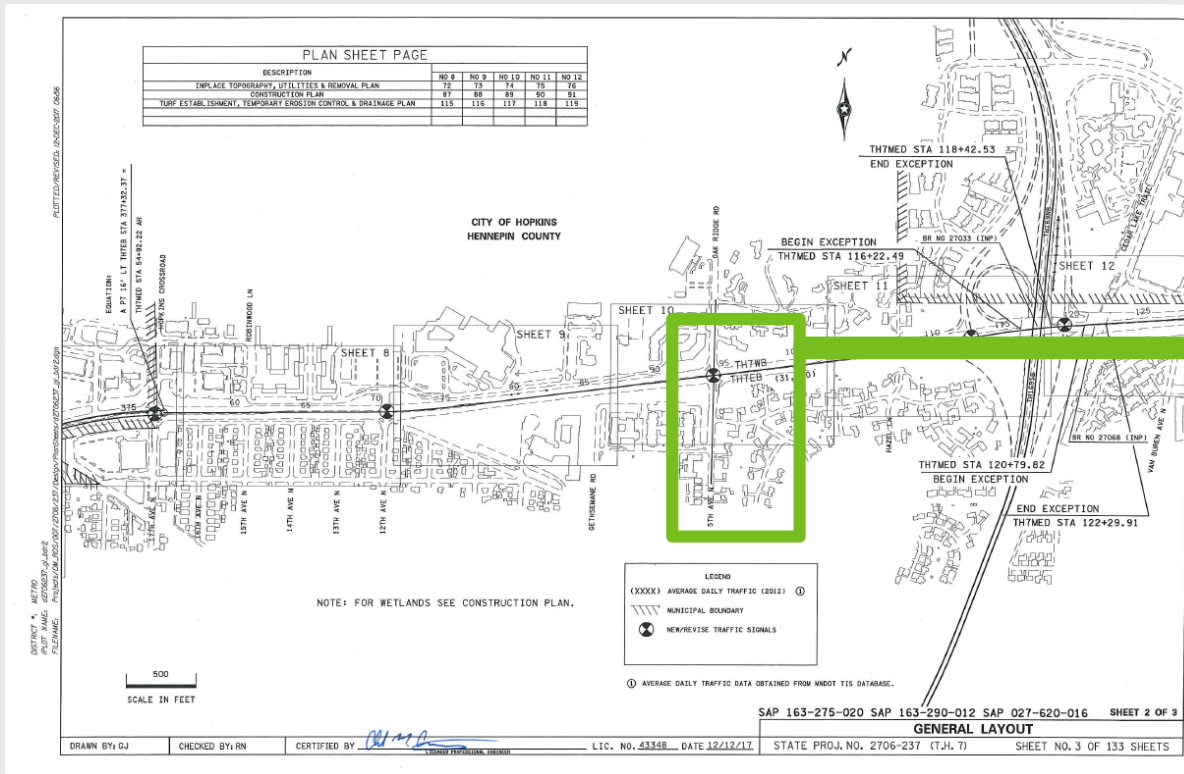
I HEREBY CERTIFY THAT THIS PLAN WAS PREPARED BY ME OR UNDER MY DIRECT SUPERVISION AND THAT I AM A DULY LICENSED PROFESSIONAL ENGINEER UNDER THE LAWS OF THE STATE OF MINNESOTA.

PRINT NAME: KJERSTI ANDERSON LICENSE # 26458

DATE: 3/14/18 SIGNATURE: *Kjersti Anderson*

ROADWAYS

All major roadways and side streets should be labeled. MnDOT used “TH” not “I” or “US” or “MN” for all state highways.

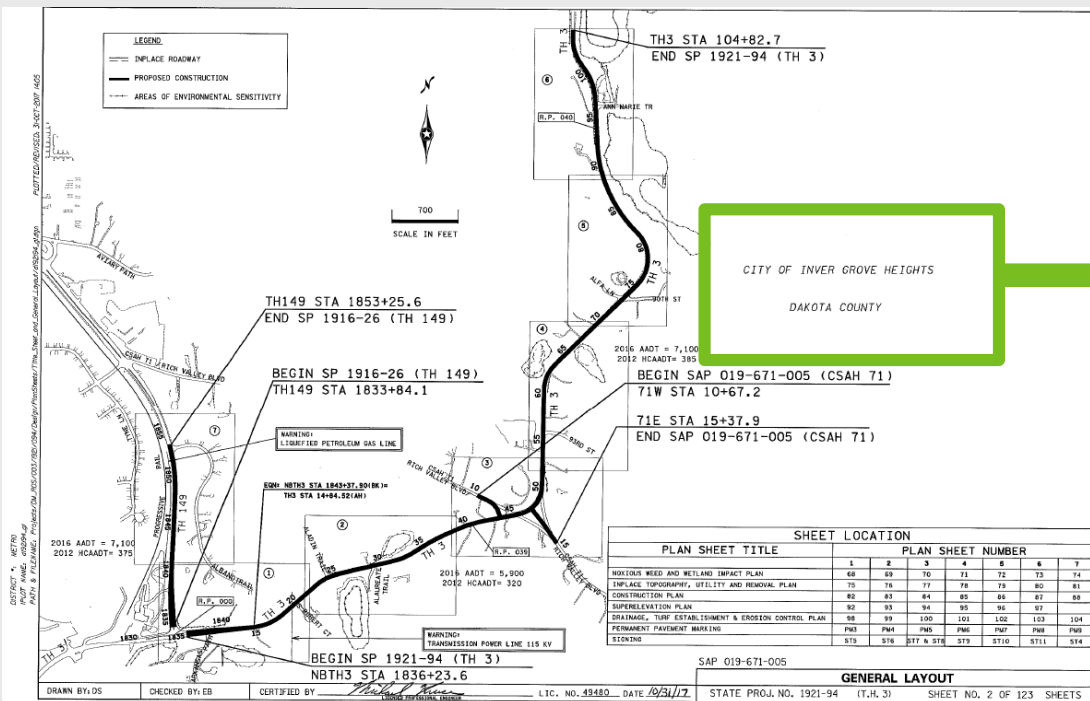


CITY, COUNTY, CORPORATE LIMITS

The general layout should label all Major Cities, Counties, and Corporate Limits.

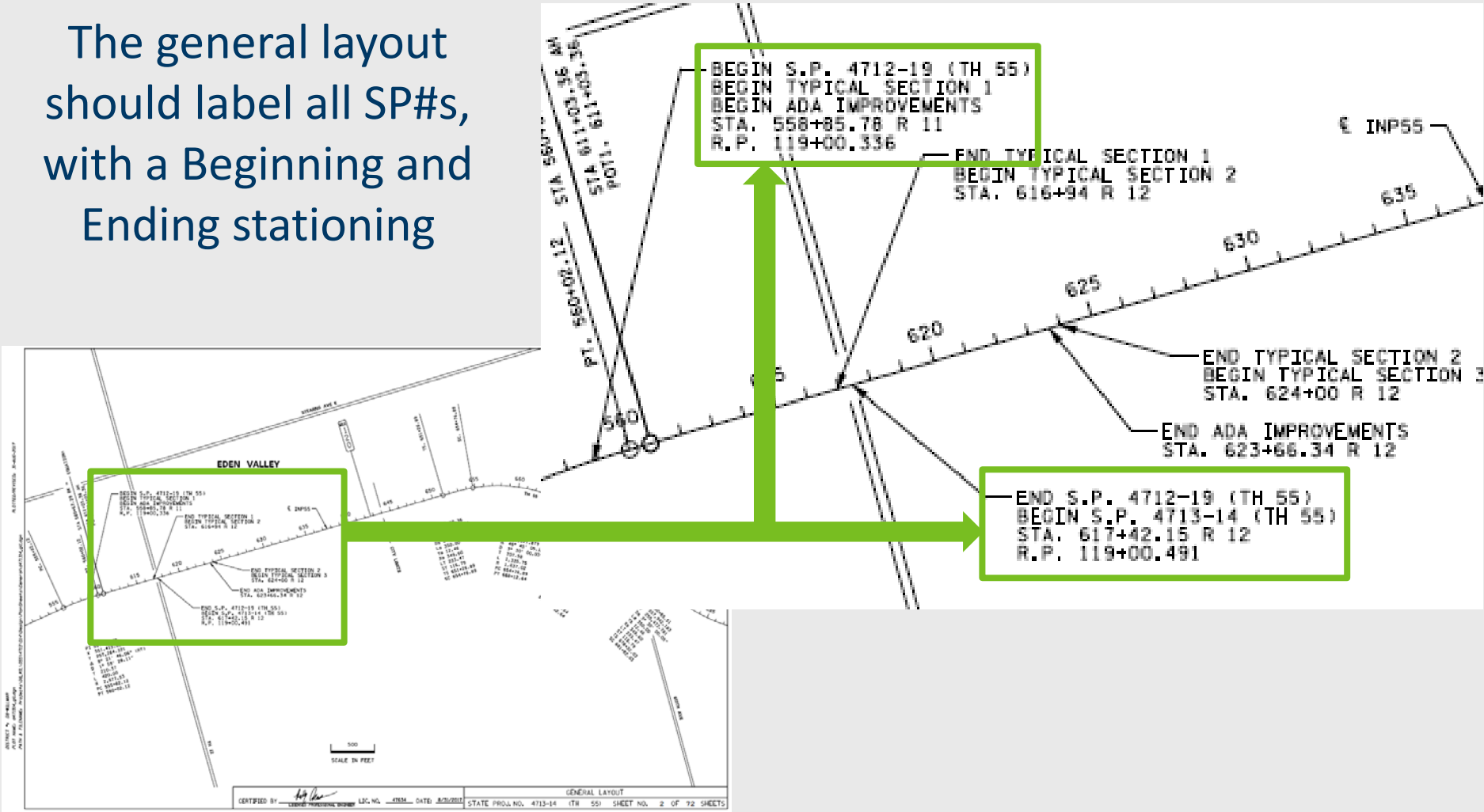
CITY OF INVER GROVE HEIGHTS

DAKOTA COUNTY



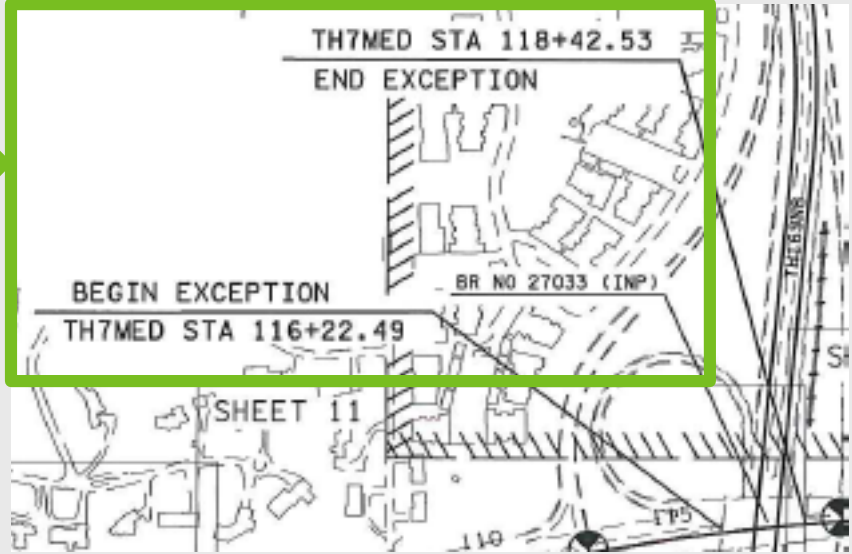
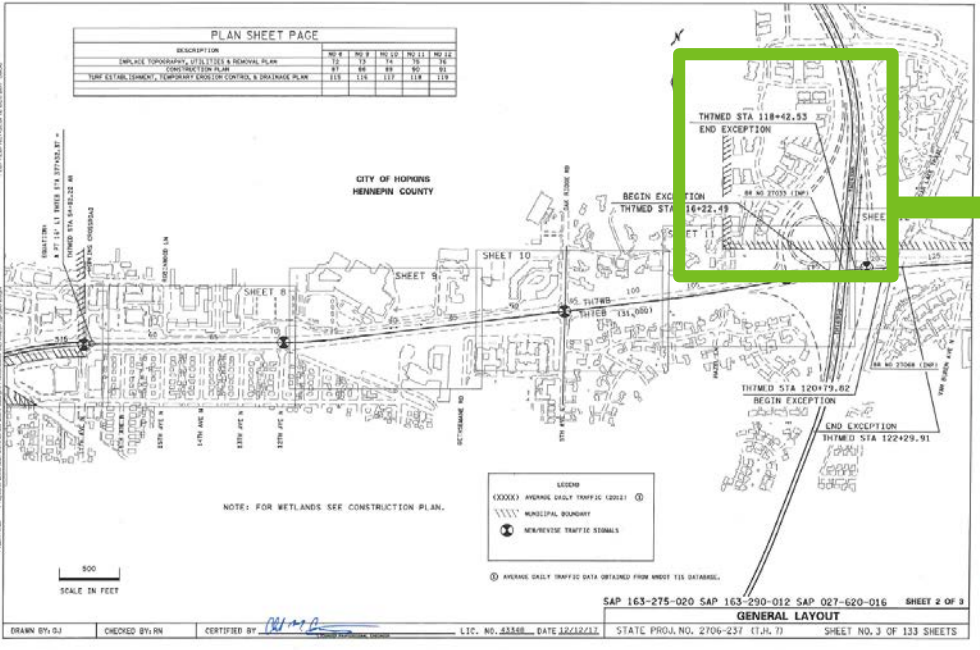
BEGIN/END SP#

The general layout should label all SP#, with a Beginning and Ending stationing



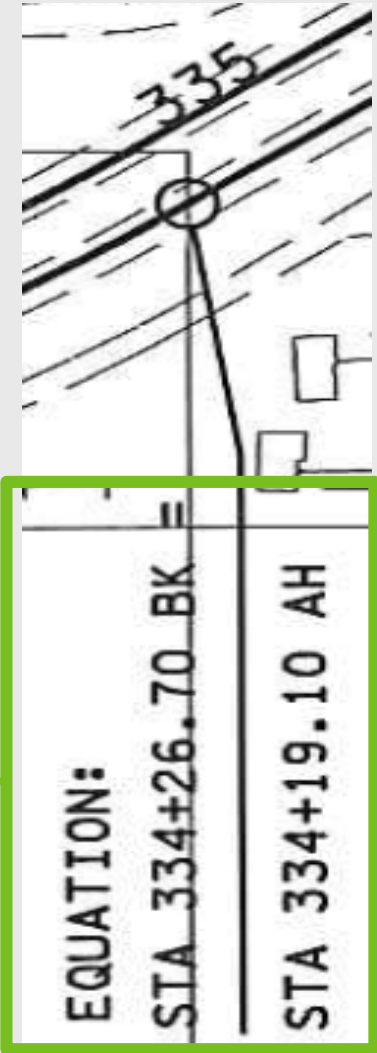
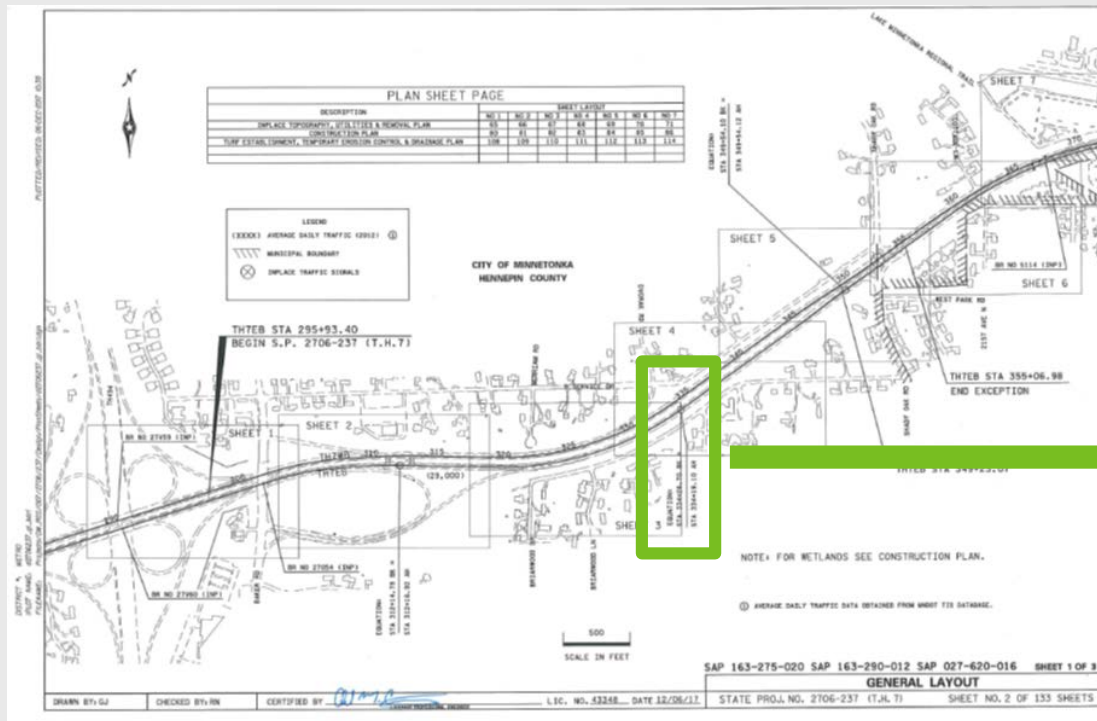
EXCEPTIONS

The general layout should label all exceptions. These are based on the alignment as stated in the length block(s) on the title sheet.



EQUATIONS

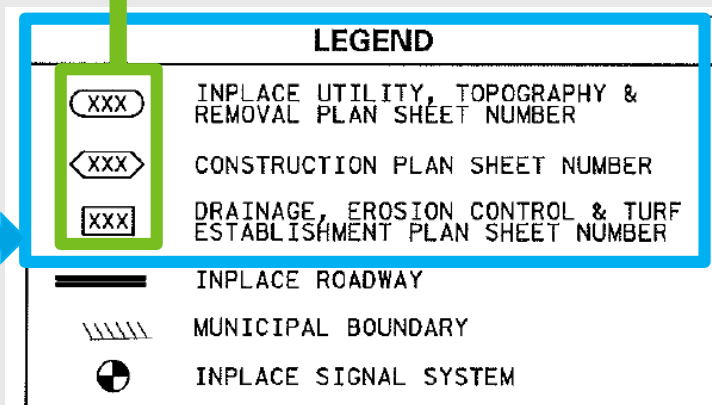
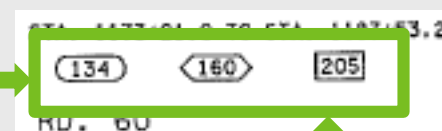
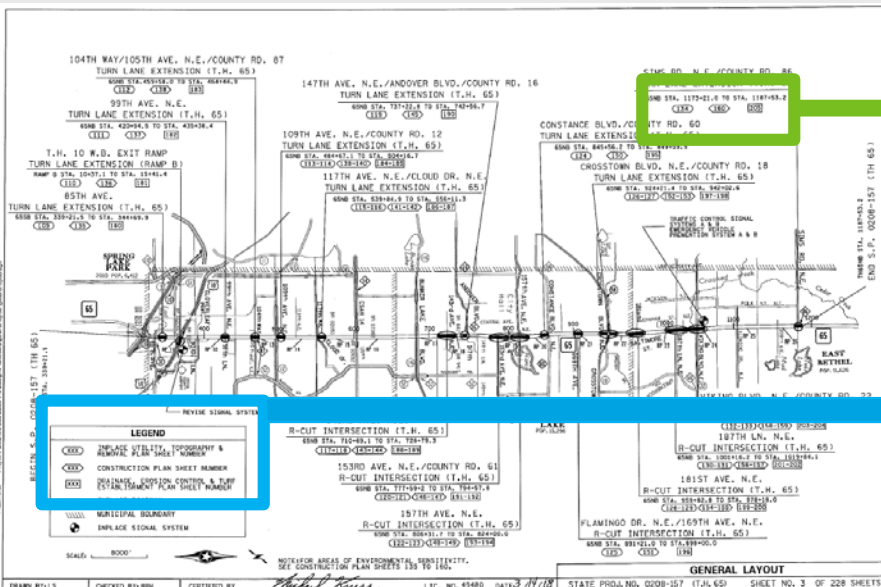
The equations that pertain to the project limits should be included on the general layout. The back equation is always listed before the ahead equation as it pertains to the previous section (left).



PLAN SHEET REFERENCES

Indicate on the general layout where in the plan the major components of the plan can be found.

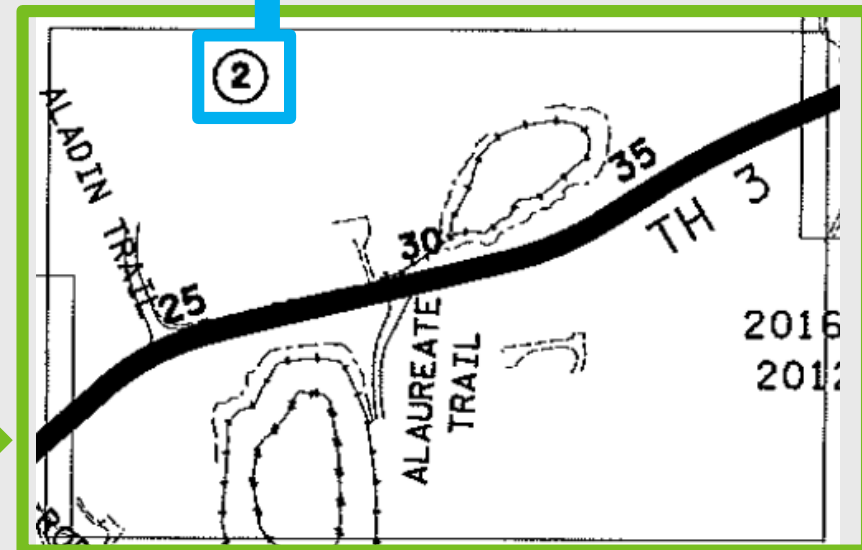
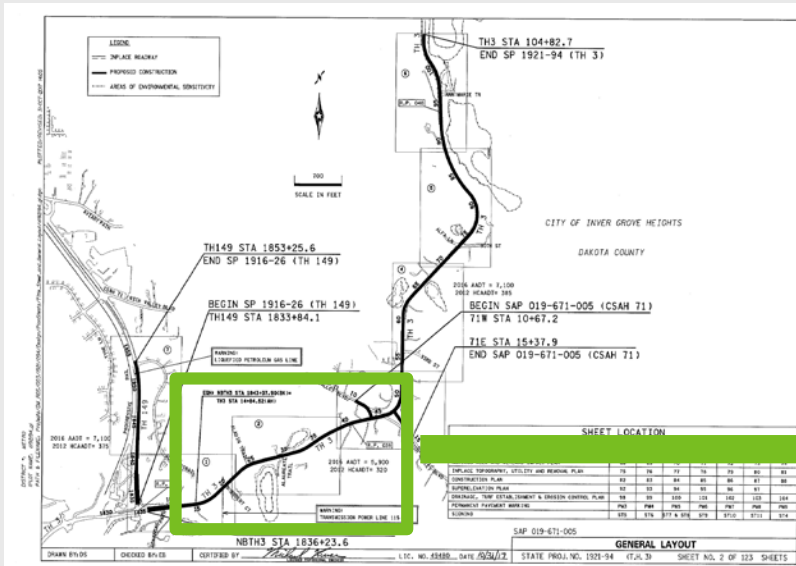
- Sheet numbers can be labelled on the layout using different symbols for such things as topography sheets, construction plan sheets, drainage, erosion control & turf establishment plan sheets, etc., with the corresponding sheet number in the corresponding symbol.



PLAN SHEET REFERENCES

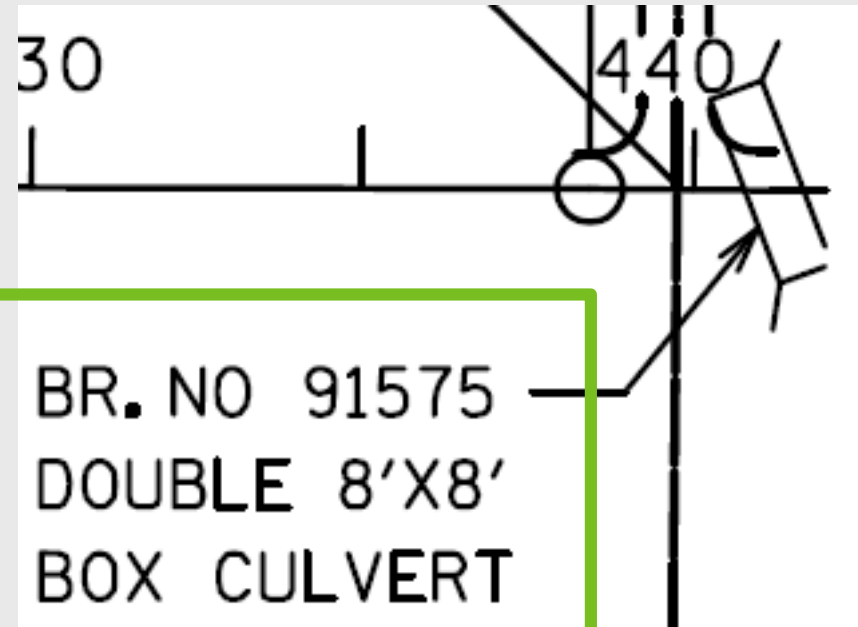
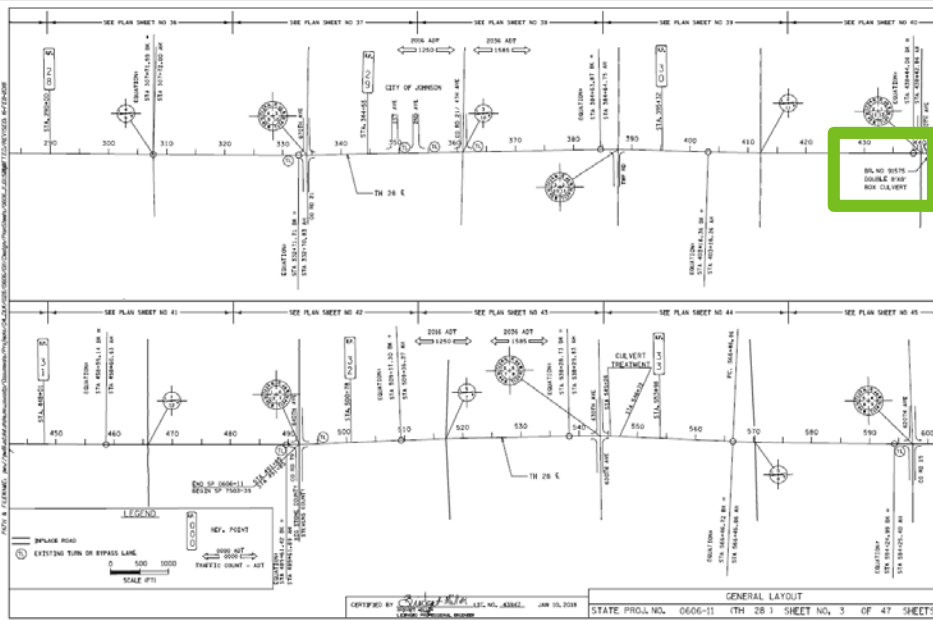
Another way to show it is with a table referencing the various plan sheet numbers. This is typically used when the sheet sections are labelled as X of X in the bottom right corner.

SHEET LOCATION							
PLAN SHEET TITLE	PLAN SHEET NUMBER						
	1	2	3	4	5	6	7
NOXIOUS WEED AND WETLAND IMPACT PLAN	68	69	70	71	72	73	74
INPLACE TOPOGRAPHY, UTILITY AND REMOVAL PLAN	75	76	77	78	79	80	81
CONSTRUCTION PLAN	82	83	84	85	86	87	88
SUPERELEVATION PLAN	92	93	94	95	96	97	
DRAINAGE, TURF ESTABLISHMENT & EROSION CONTROL PLAN	98	99	100	101	102	103	104
PERMANENT PAVEMENT MARKING	PM3	PM4	PM5	PM6	PM7	PM8	PM9
SIGNING	ST5	ST6	ST7 & ST8	ST9	ST10	ST11	ST4



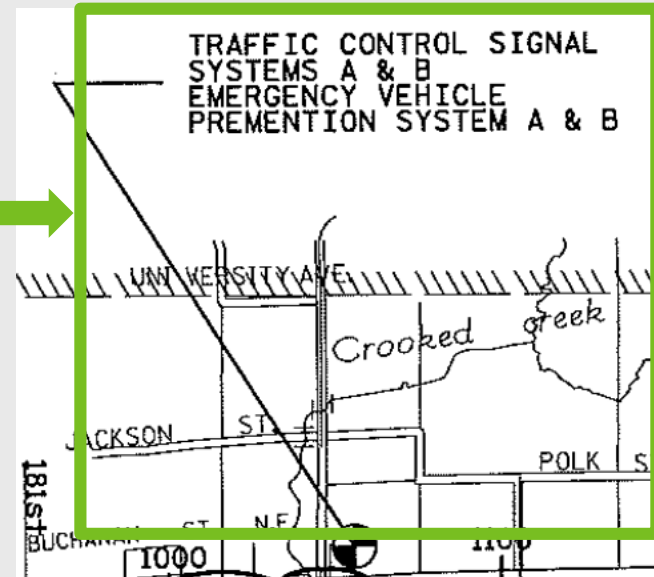
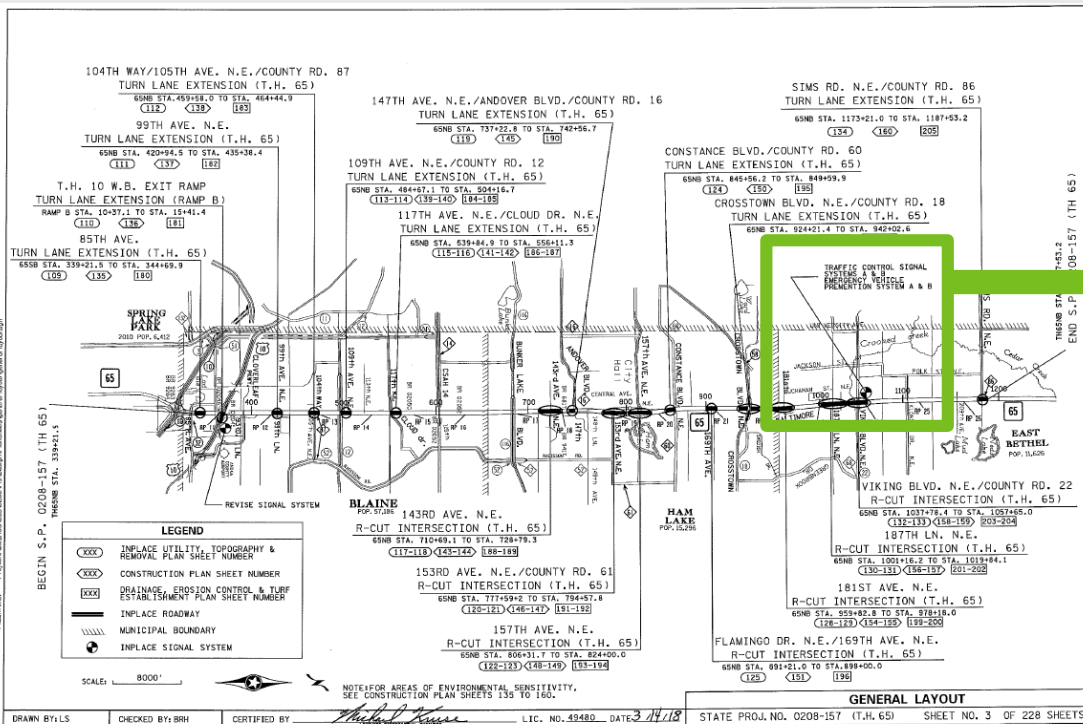
BRIDGES

All inplace and proposed bridges should be labeled on the general layout. What they cross over/under should also be labeled. (e.g. Rivers, Railroads, roads, etc.).



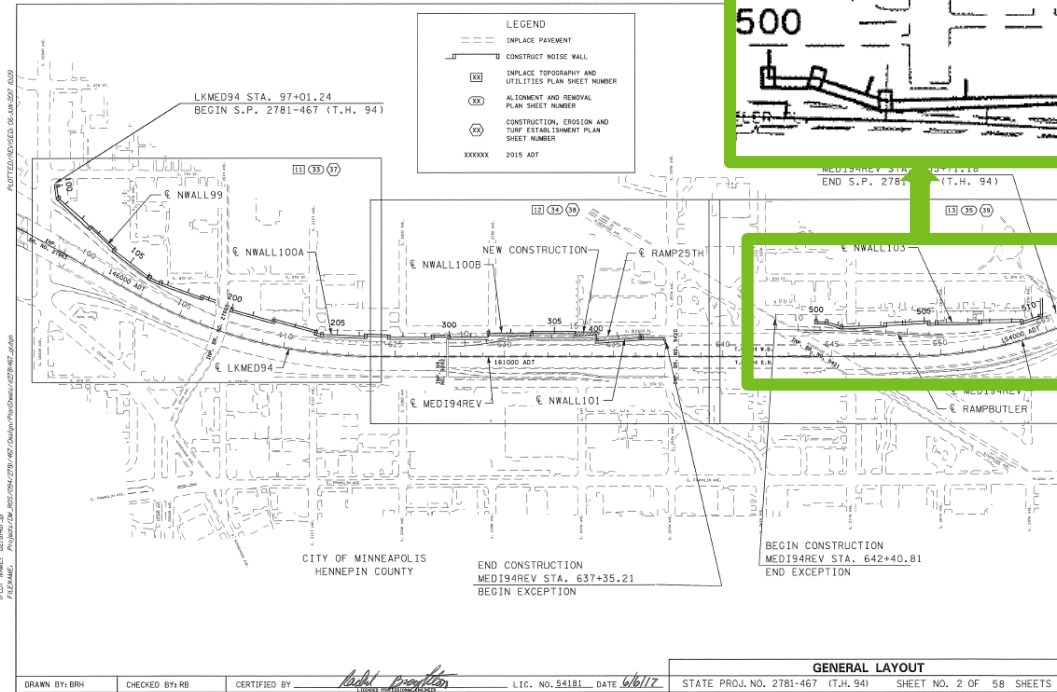
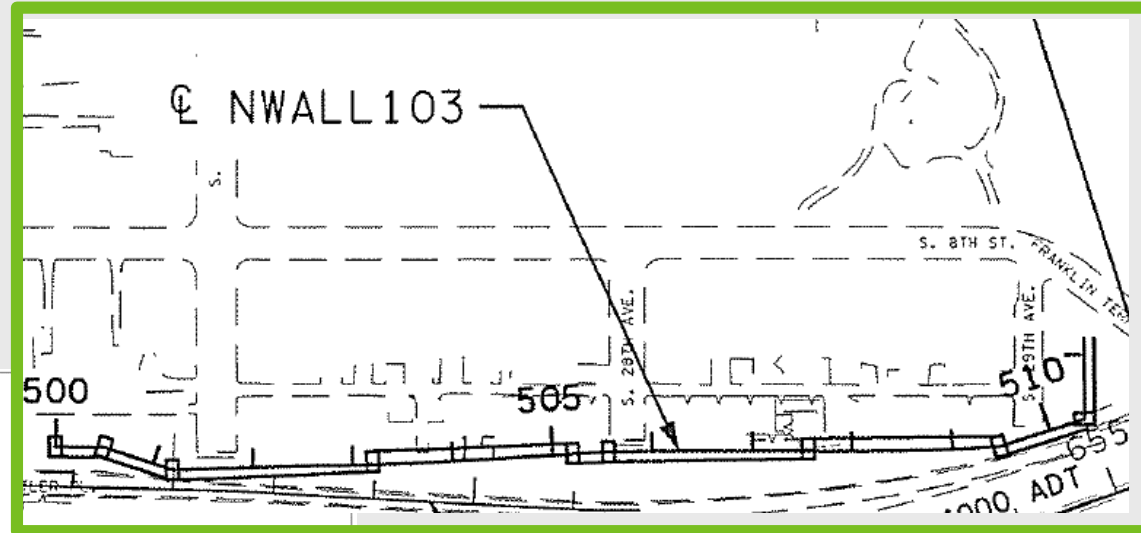
SIGNALS & LIGHTING

The general layout is a good place to show proposed signal locations.



WALLS

The general layout should show the proposed wall locations.

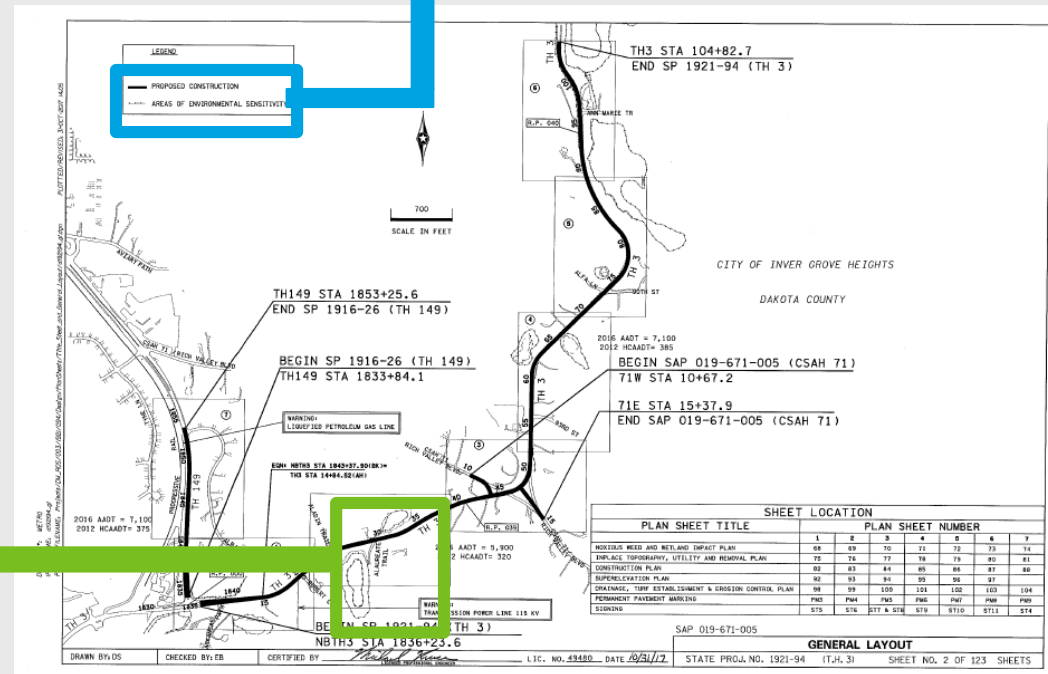
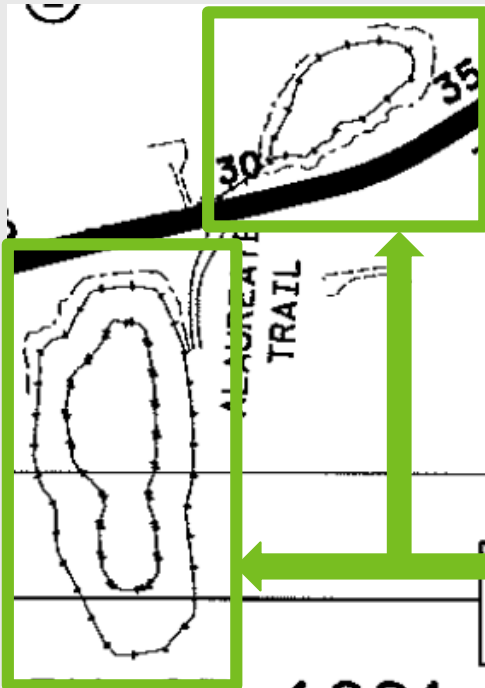


AREAS OF ENVIRONMENTAL SENSITIVITY

It is important to show the areas of environmental sensitivity in the plan to make sure these areas are not impacted. These locations must be shown on the general layout sheets. It is recommended to also show them on the removal and construction plan sheets as well.

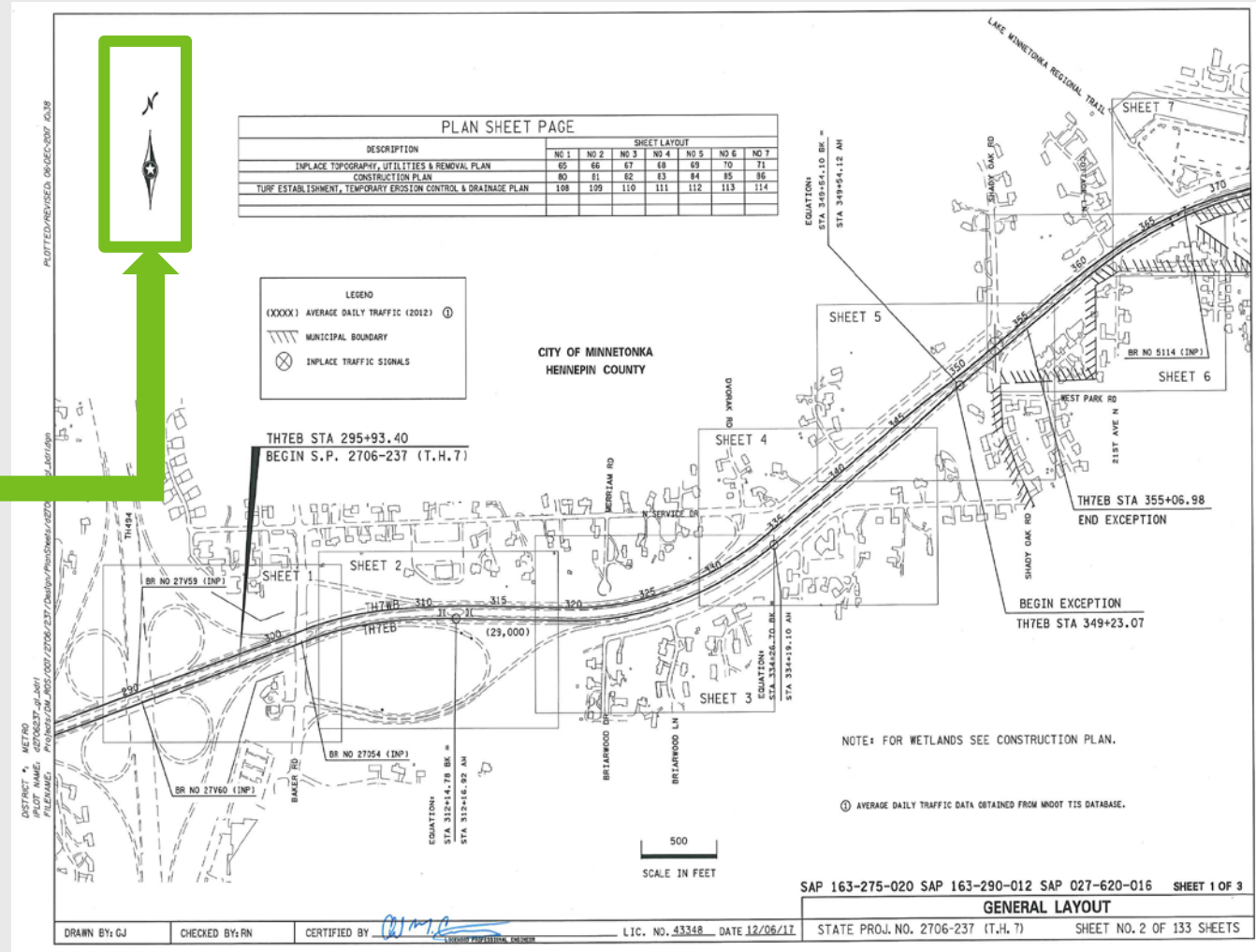
LEGEND

- == INPLACE ROADWAY
- PROPOSED CONSTRUCTION
- AREAS OF ENVIRONMENTAL SENSITIVITY



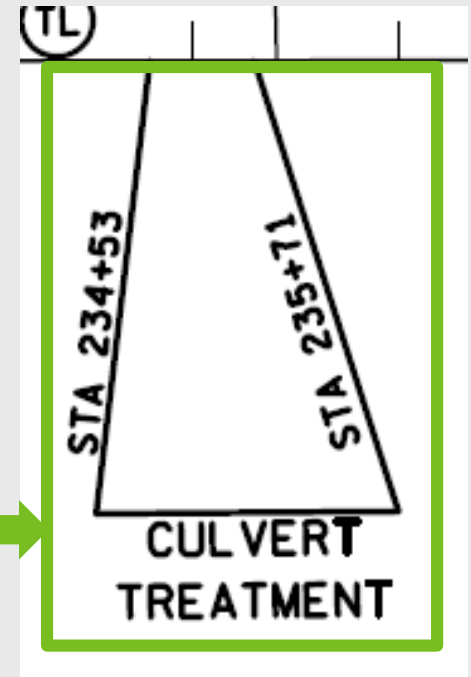
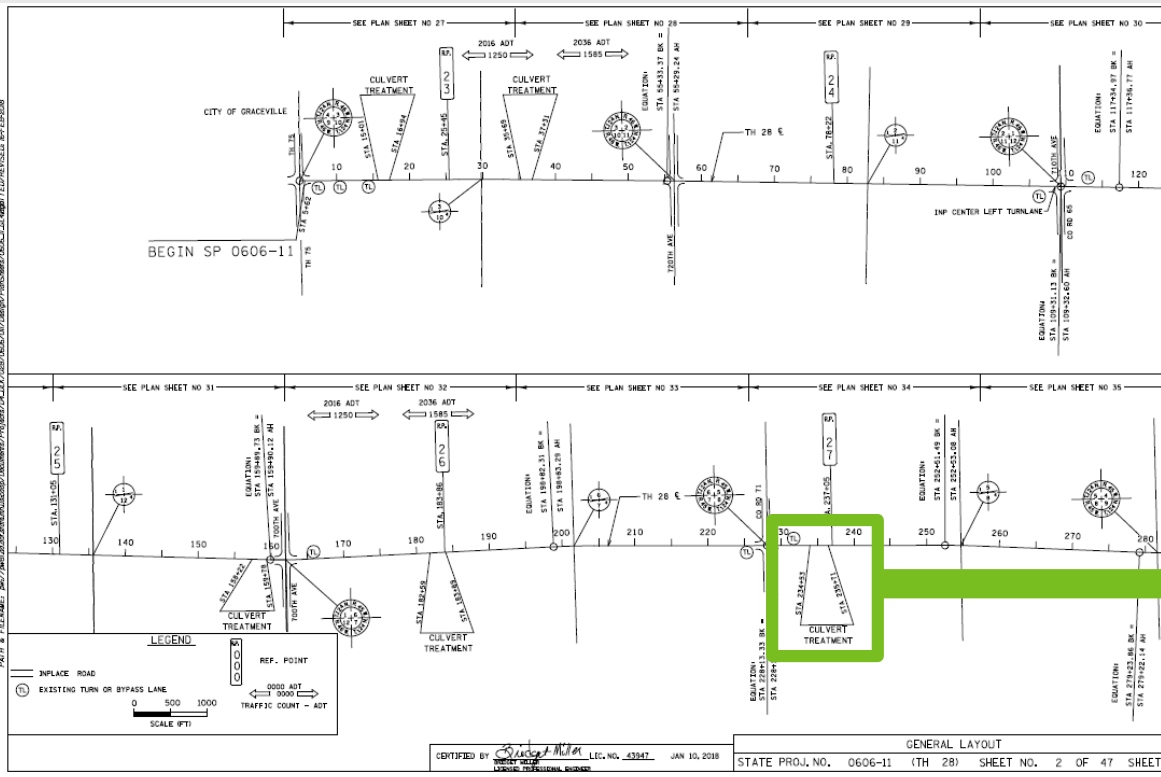
INDEX MAP (Continued)

➤ The Index Map should include a north arrow.



GENERAL LAYOUT – CONSTRUCTION PLAN VIEW

Sometimes general layouts are used in place of construction plan views. Such as is sporadic culvert work or turn lanes.



CONCLUSION

- There are several ways to show information on the general layout. The above slides were a few examples of how they can be shown.
- The information included should be the same no matter which example you follow.

QUESTIONS????

Any questions contact us ANYTIME:

Tim Swanson, P.E. @ 651-366-4689
tim.swanson@state.mn.us

Chee Yeun Lay, P.E. @ 651-366-4662
chee.yeun.lay@state.mn.us

Jane Krebsbach @ 651-366-3183
jane.krebsbach@state.mn.us