

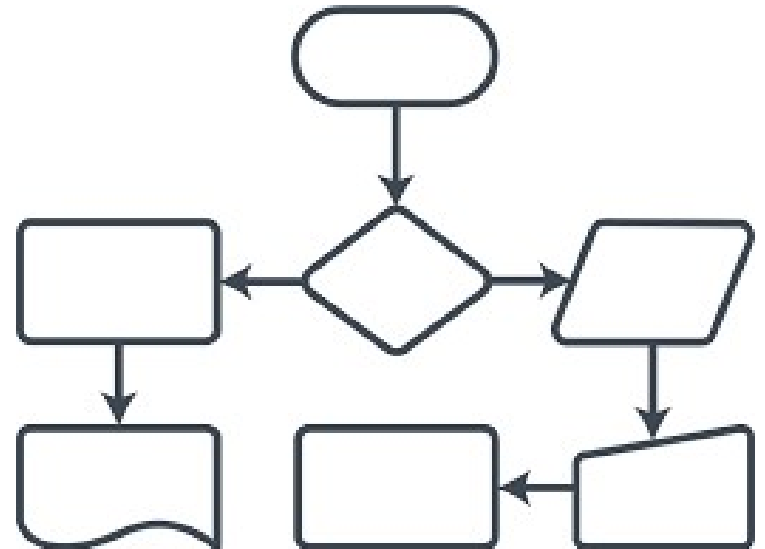
Life Cycle Assessments in the DRD

Newest Developments and focus areas



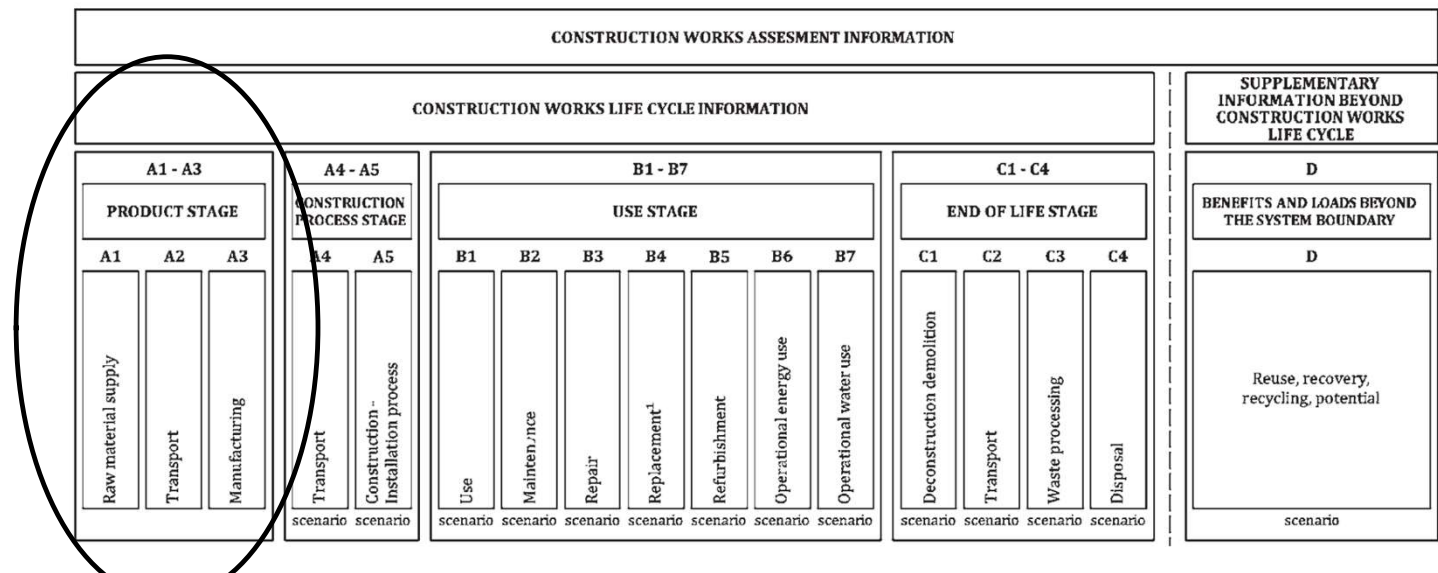
Disposition

- Where are we now?
- Where are we headed tomorrow?
- ... and a bit beyond...



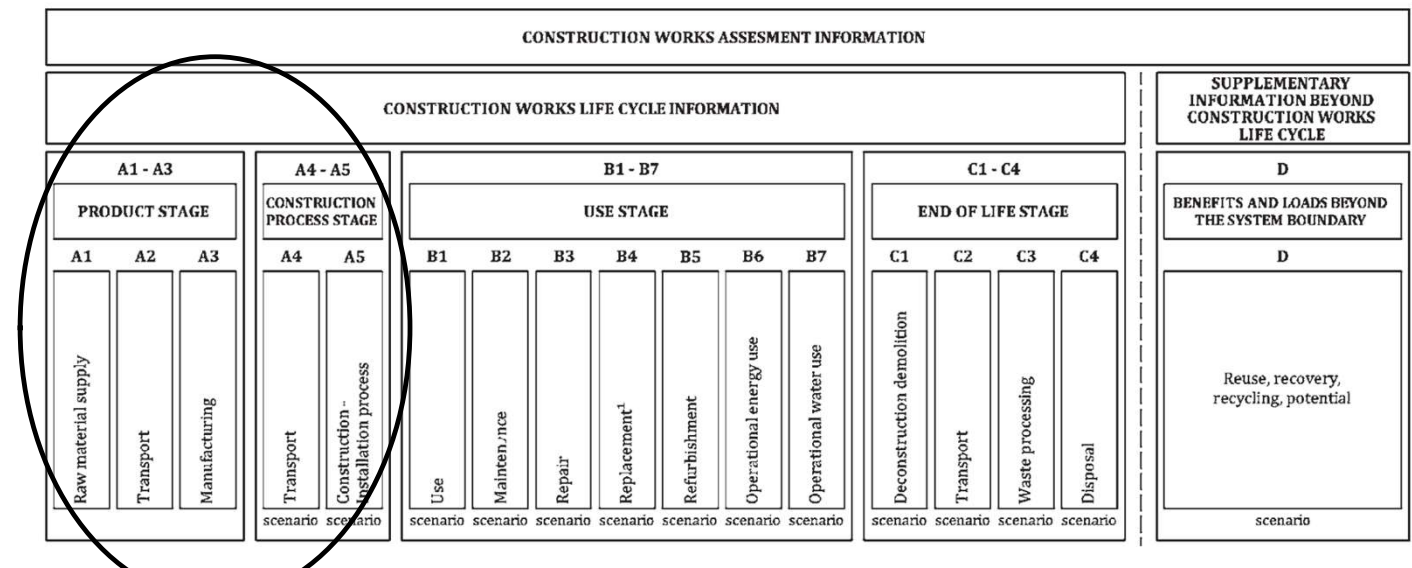
Where are we now in terms of LCA and infrastructure

- InfraLCA
 - Our tool was developed from 2019-2021
 - Subject to many and continuous updates
 - EN15804:A2



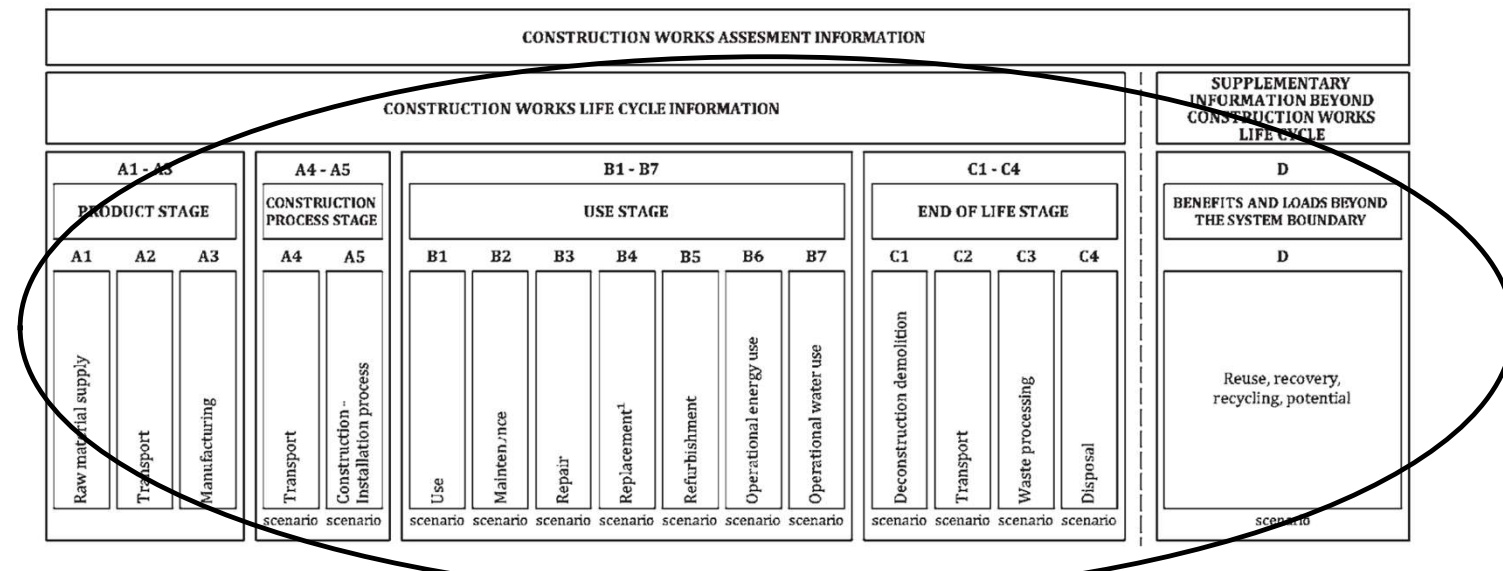
Where are we now in terms of LCA and infrastructure

- InfraLCA
 - Our tool was developed from 2019-2021
 - Subject to many and continuous updates
 - EN15804:A2



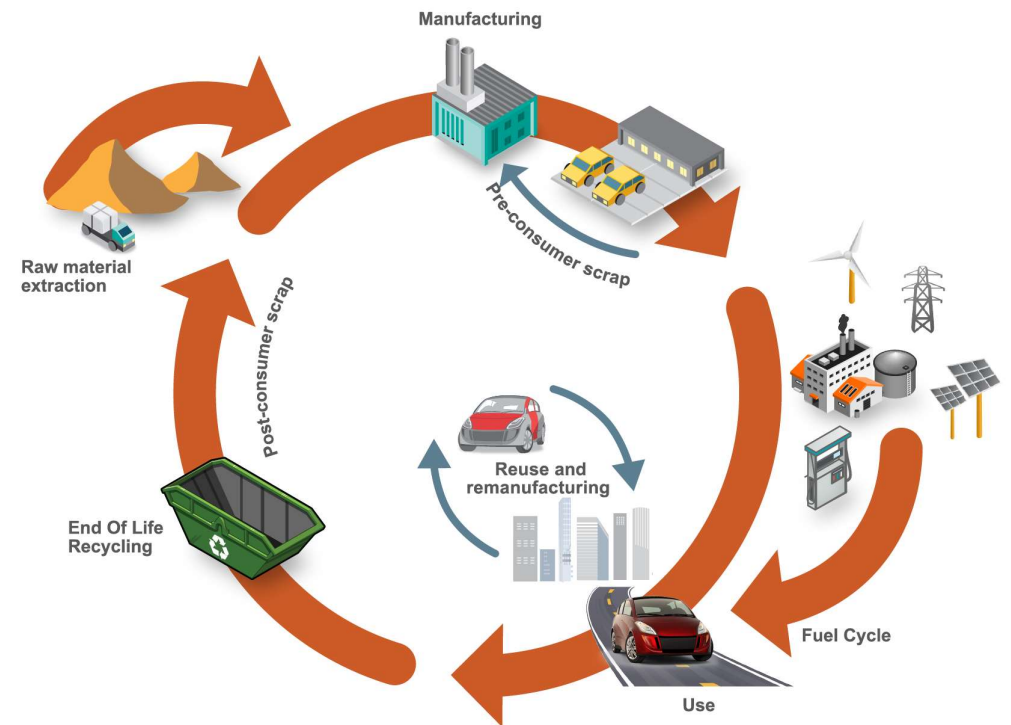
Where are we now in terms of LCA and infrastructure

- InfraLCA
 - Our tool was developed from 2019-2021
 - Subject to many and continuous updates
 - EN15804:A2



Where are we now in terms of LCA and infrastructure

- InfraLCA
 - A tool built with vital input from
 - *Contractors*
 - *Owners of infrastructure*
 - *Consultants*
 - Making InfraLCA a national tool
 - *Free to download*
 - *Unification of language*



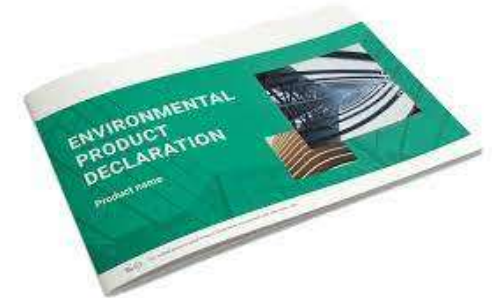
Where are we now in terms of LCA and infrastructure

- A catalog of instruments is being established
- Analyze all products and initiatives in InfraLCA and relate to cost
- Through InfraLCA and a database, we can focus resources with greatest effect



Where are we headed tomorrow?

- Unification of language enables the basis for requirements
- We don't build ourselves, we go through tenders
- In tenders, we require all to provide product-specific EPDs
- Timeline for EPD-requirements
 - 2020: all pavement projects
 - 2021: all projects
 - 2023: all EPDs must follow the EN15804:A2 standard



Where are we headed tomorrow?

- Baselines are vital and established through InfraLCA
- Based on marked values
- Baselines improve through more data continuously coming in
- We are now at a stage where we have a substantial database
- Use this knowledge to put forth new requirements in tenders
- In 2024, we will choose 10 pavement projects to initiate climate impact as an award-specification alongside costs

... and a bit beyond...

- With a good database, good opportunities follow
- Quantifiable phases and further requirements

CONSTRUCTION WORKS ASSESSMENT INFORMATION											
CONSTRUCTION WORKS LIFE CYCLE INFORMATION											
A1 - A3			A4 - A5		B1 - B7						
PRODUCT STAGE			CONSTRUCTION PROCESS STAGE		USE STAGE						
A1	A2	A3	A4	A5	B1	B2	B3	B4	B5	B6	
Raw material supply	Transport	Manufacturing	Transport	Construction - Installation process	Use	Maintenance	Repair	Replacement	Refurbishment	Operational energy use	
scenario	scenario	scenario	scenario	scenario	scenario	scenario	scenario	scenario	scenario	scenario	



Thank you



**Vejarbejde
slut**

God tur

