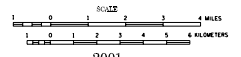


2001 TRAFFIC VOLUMES GENERAL HIGHWAY MAP CROW WING COUNTY MINNESOTA

PREPARED BY THE
MINNESOTA DEPARTMENT OF TRANSPORTATION
PROGRAM SUPPORT GROUP
IN COOPERATION WITH
U.S. DEPARTMENT OF TRANSPORTATION
FEDERAL HIGHWAY ADMINISTRATION



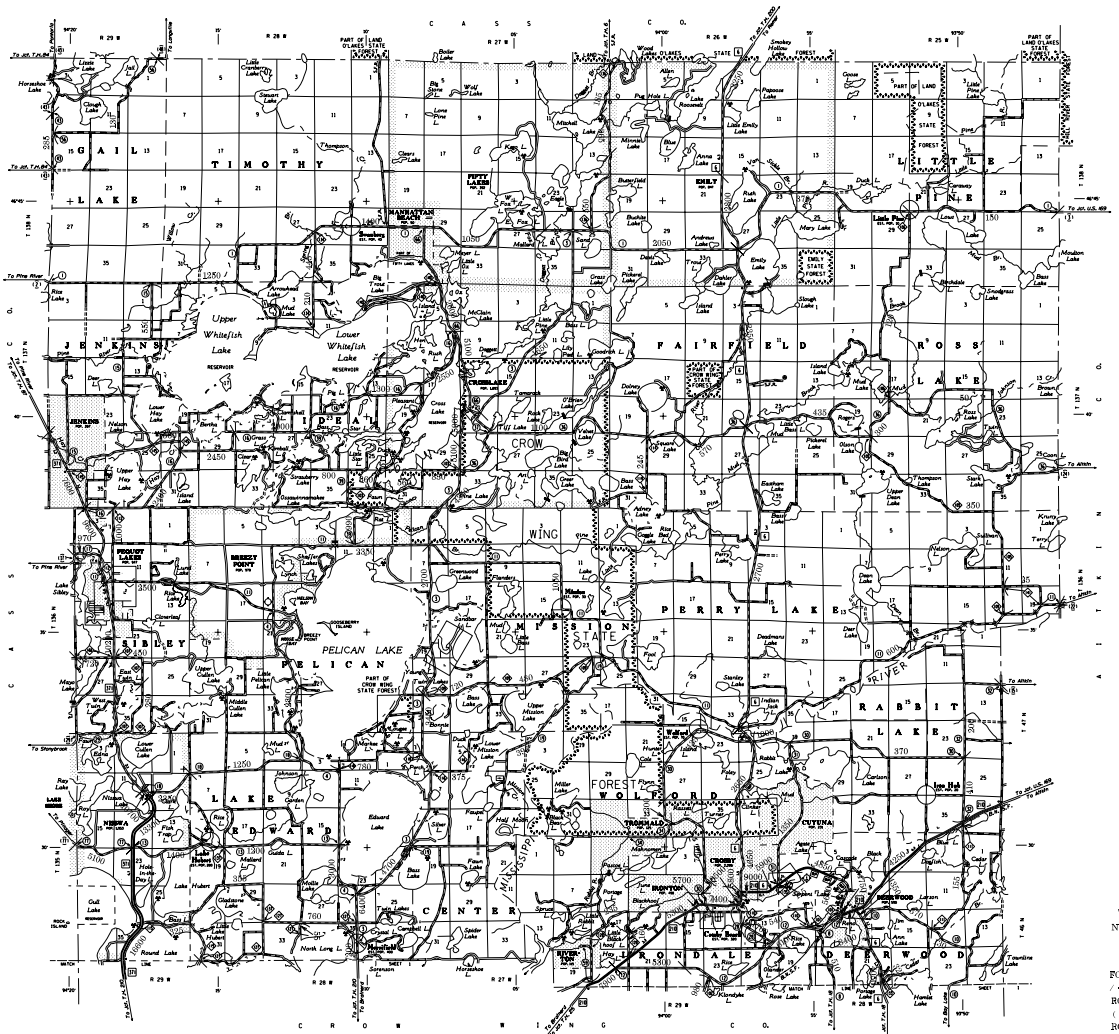
2001
BASIC DATA - 1997

Projection: Minnesota Coordinate System
North American Datum of 1983
North American Datum of 1983



LEGEND

- | | |
|----------------------------------|-------------------|
| ROAD AND HIGHWAY FEATURES | TOPOGRAPHY |
| INTERSTATE | 100' CONTOUR |
| STATE HIGHWAY | 200' CONTOUR |
| COUNTY ROAD | 300' CONTOUR |
| PRIVATE ROAD | 400' CONTOUR |
| RAILROAD | 500' CONTOUR |
| UTILITY LINE | 600' CONTOUR |
| WATER BODY | 700' CONTOUR |
| LAKE SHORELINE | 800' CONTOUR |
| WETLAND | 900' CONTOUR |
| FOREST LAND | 1000' CONTOUR |
| AGRICULTURE | 1100' CONTOUR |
| RESIDENTIAL | 1200' CONTOUR |
| INDUSTRIAL | 1300' CONTOUR |
| OPEN LAND | 1400' CONTOUR |
| WATER BODY | 1500' CONTOUR |



VOLUMES PREPARED BY
THE OFFICE OF
TRANSPORTATION DATA & ANALYSIS

NUMERALS INDICATE AVERAGE DAILY
TRAFFIC VOLUMES ON DESIGNATED ROADS
NOTE THAT ROUTES ARE 2000 A.A.D.T. VOLUMES

FOR DESIGNATED ROADS:
— SEGMENT ENDPOINT FOR ALL
ROADS INTERSECTED BY HATCH
+ SEGMENT ENDPOINT ONLY FOR
ROAD SEPARATED FROM INTERSECTING
ROAD BY ARC

*TOTAL A.A.D.T. EXCEPT THROUGH ROADS AND
ON-THE-SPUR CURRENT TO 31 JANUARY 2002.
NOTE FOR DETAIL OF COUNTY STATE AID HIGHWAYS AND COUNTY
ROADS IN INCORPORATED PLACES SEE MAPS OF INCORPORATED PLACES.

