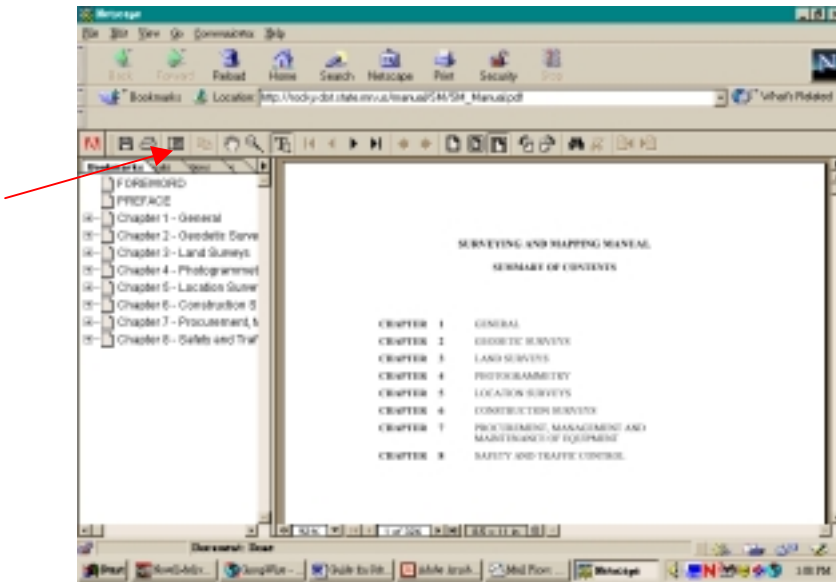


The Surveying and Mapping Manual is now online. It is in PDF format, so you will need Adobe Acrobat Reader installed on your computer in order to view it.

Acrobat Reader opens to a window with a document pane showing the Summary of Contents page and a navigation pane with bookmarks. If only the document pane appears, click on the “show/hide navigation pane” button.

Show/hide navigation pane button



Each bookmark in the navigation pane links to a different view or page in the document. The bookmarks are also expandable directories. If you click on the (+) sign next to a bookmark, it will expand to other bookmarks within the first. This way, you can jump to your areas of interest within the Manual, without needing to scroll through the entire document. An example can be seen below. Chapter 2 has been expanded to Section 2-2, which itself has been expanded to the Figures.

