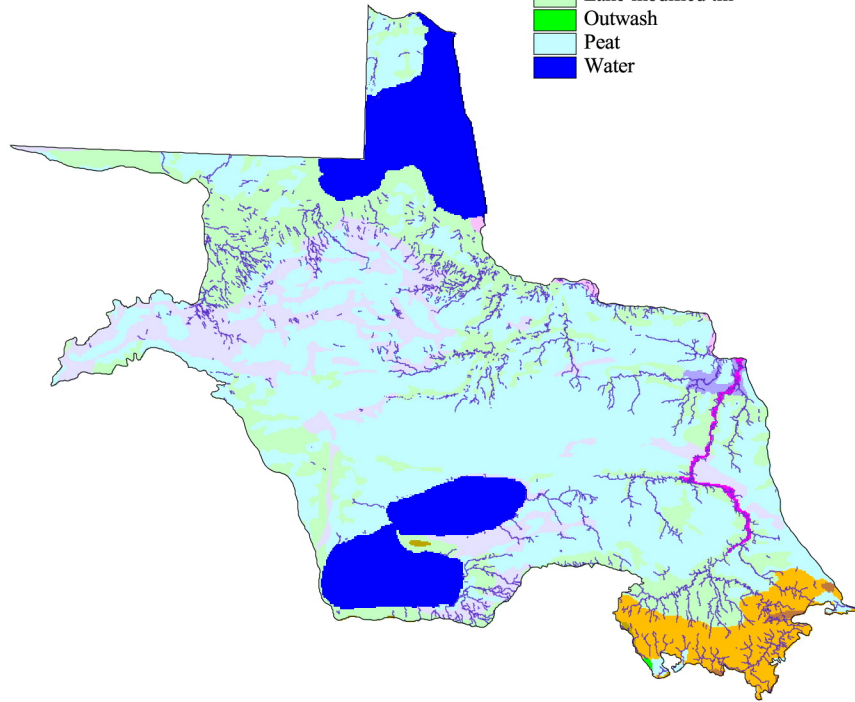


a

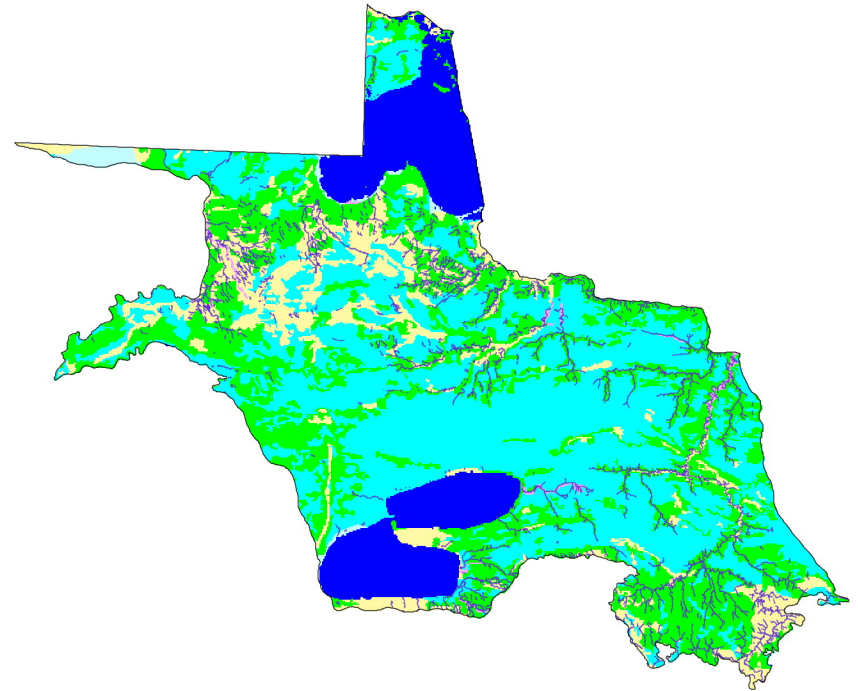
- Streams
- Alluvium
- Terraces
- Ground moraine
- Stagnation moraine
- End moraine
- Glacial lake sediment (clay)
- Glacial lake sediment (sand/gravel)
- Lake-modified till
- Outwash
- Peat
- Water



Generalized Quaternary Geology

b

- Streams
- Marsh
- Peat/bogs
- Alluvial soils
- Poorly-drained soils
- Well-drained soils
- Water



Generalized Soils

# Geology and Soils

## Agassiz Lowlands

