

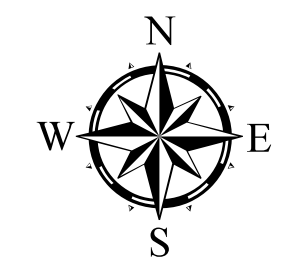
TOWNSHIP OF PEPPER TON

PREPARED BY THE
MINNESOTA DEPARTMENT OF TRANSPORTATION
OFFICE OF TRANSPORTATION SYSTEM MANAGEMENT

IN COOPERATION WITH
U.S. DEPARTMENT OF TRANSPORTATION
FEDERAL HIGHWAY ADMINISTRATION

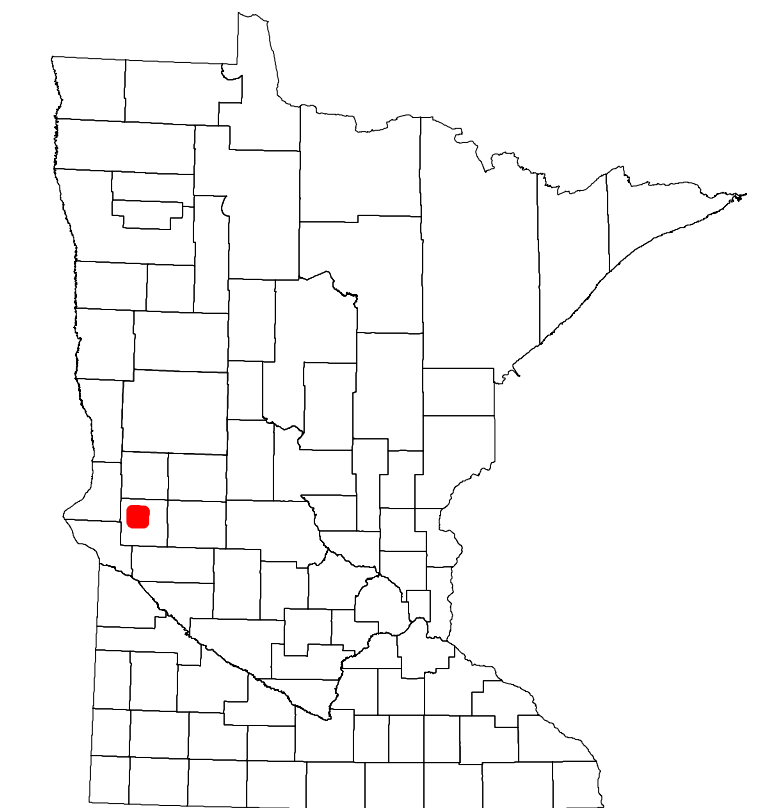


Projection:
Transverse Mercator
NAD 1986
UTM Zone 15

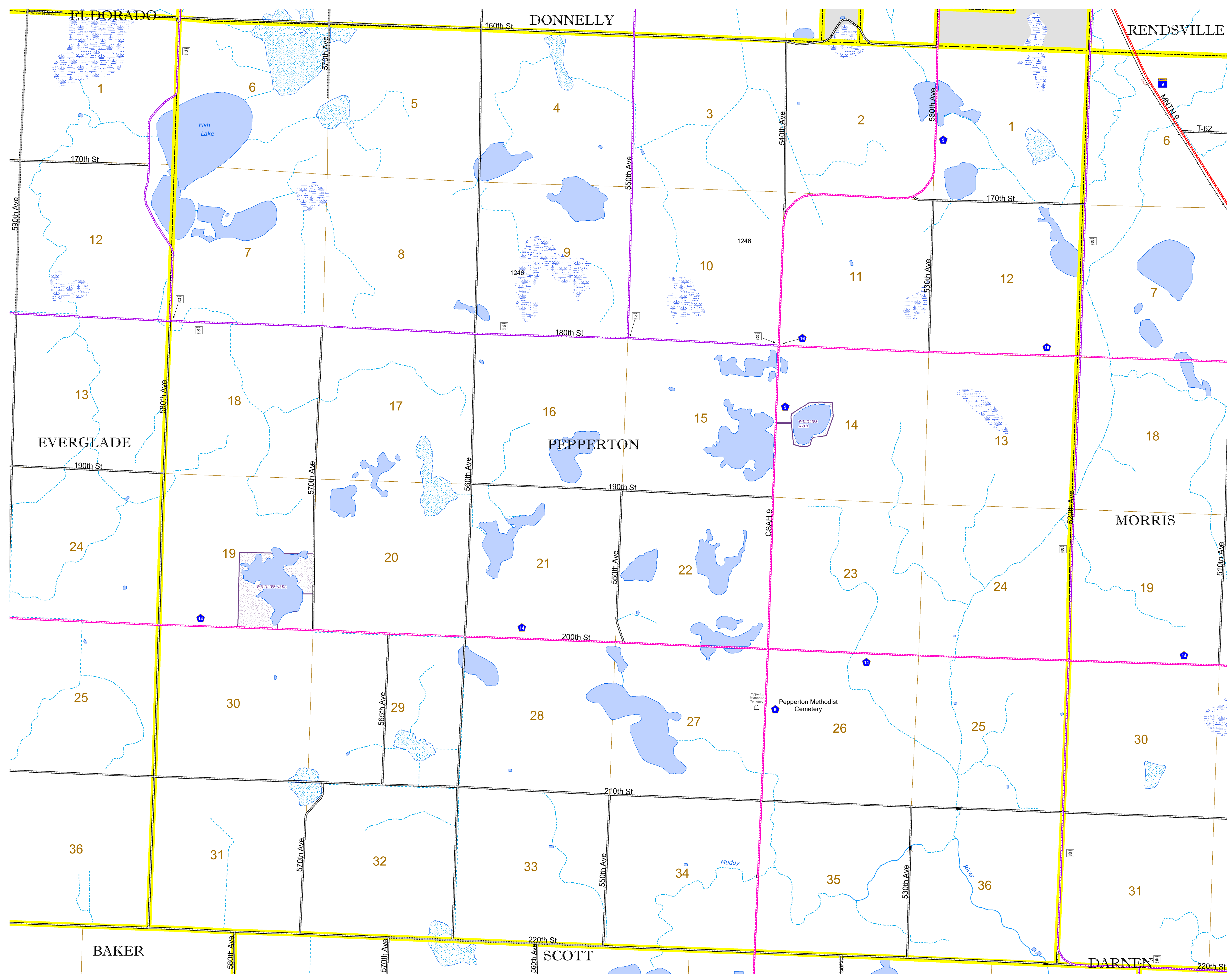


North American Datum
of 1986

ROAD AND ROADWAY FEATURES		AVIATION FEATURES	
INTERSTATE	CONCRETE	COMMERCIAL AIRPORT	GENERAL AIRPORT
US HIGHWAY	BITUMINOUS	AIRSTRIP	SEAPLANE
MN HIGHWAY	GRAVEL	AIRPORT RUNWAY	RAILROAD AND RAILWAY FEATURES
COUNTY STATE AID HIGHWAY	DIRT/UNIMPROVED	EMPIRE BUILDER STATION (AMTRAK)	NORTHSTAR STATION (COMMUTER)
COUNTY ROAD	OTHER	LIGHT RAIL	BLUE LINE
TOWNSHIP ROAD	UNKNOWN	GREEN LINE	INFRASTRUCTURE FEATURES
UNORGANIZED TERRITORY ROAD	RAMP OR CONNECTOR	LONG BRIDGE (200' OR GREATER SPAN)	MAJOR BRIDGE (20' TO 200' SPAN)
OTHER ROADS:	INTERSTATE EXIT	MINOR BRIDGE (5' TO 20' SPAN)	DAM
Municipal	RAILROAD AND RAILWAY FEATURES	LOCK AND DAM	CITY CENTERS
Private	RAILROAD AND RAILWAY FEATURES	STATE CAPITAL	COUNTY SEAT
National Monument	RAILROAD AND RAILWAY FEATURES	CITY CENTER	CITY CENTER
National Park	RAILROAD AND RAILWAY FEATURES	UNINCORPORATED COMMUNITY	COMMUNITY
National Wildlife Refuge	RAILROAD AND RAILWAY FEATURES	STATE CAPITAL	COUNTY SEAT
State Park	RAILROAD AND RAILWAY FEATURES	CITY CENTER	CITY CENTER
Preserve	RAILROAD AND RAILWAY FEATURES	UNINCORPORATED COMMUNITY	COMMUNITY
BOUNDARY FEATURES	BOUNDARY FEATURES	STATE CAPITAL	COUNTY SEAT
TRIBAL LAND	STATE OF MINNESOTA	CITY CENTER	CITY CENTER
COUNTY	MUNICIPALITY	UNINCORPORATED COMMUNITY	COMMUNITY
UNORGANIZED TERRITORY	FEDERAL ADJUSTED URBAN AREA (2014)	STATE CAPITAL	COUNTY SEAT
CIVIL TOWNSHIP	CONGRESSIONAL TOWNSHIP	CITY CENTER	CITY CENTER
SECTION	MILITARY	UNINCORPORATED COMMUNITY	COMMUNITY
VOYAGEURS NATIONAL PARK	BOUNDARY WATERS CANOE AREA WILDERNESS	STATE CAPITAL	COUNTY SEAT
STATE PARK	REGIONAL PARK	CITY CENTER	CITY CENTER
NATIONAL FOREST	NATIONAL AND STATE FOREST	UNINCORPORATED COMMUNITY	COMMUNITY
STATE FOREST	NATIONAL TRAIL	STATE CAPITAL	COUNTY SEAT
WILDLIFE REFUGUE AREA	WILDLIFE MANAGEMENT AREA	CITY CENTER	CITY CENTER
HYDROLOGIC FEATURES	HYDROLOGIC FEATURES	UNINCORPORATED COMMUNITY	COMMUNITY
RIVER OR STREAM (PERMANENT)	LAKE, POND OR RESERVOIR	STATE CAPITAL	COUNTY SEAT
STREAM (INTERMITTENT)	DRAINAGE DITCH	CITY CENTER	CITY CENTER
WETLAND	ISLAND OR LAND	UNINCORPORATED COMMUNITY	COMMUNITY
REGIONAL WATERSHED	REGIONAL WATERSHED	STATE CAPITAL	COUNTY SEAT



Population (U.S. Census 2010): 134



To request information from this document in an alternative format, call 651-366-4718 or 1-800-657-3774 (Greater Minnesota); 711 or 1-800-627-3529 (Minnesota Relay). You may also send an e-mail to ADarequest.dot@state.mn.us. (Please request at least one week in advance.)