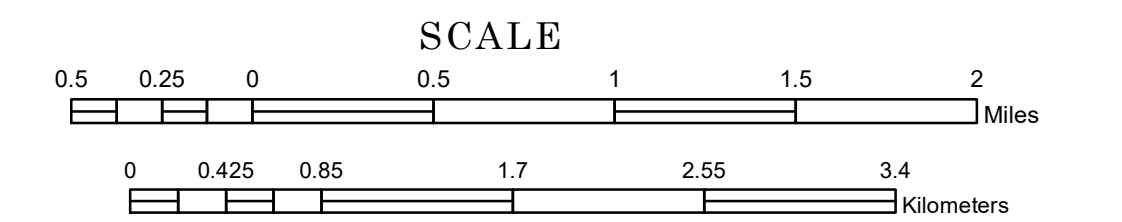


TOWNSHIP OF GREENWOOD

PREPARED BY THE
MINNESOTA DEPARTMENT OF TRANSPORTATION
OFFICE OF TRANSPORTATION SYSTEM MANAGEMENT

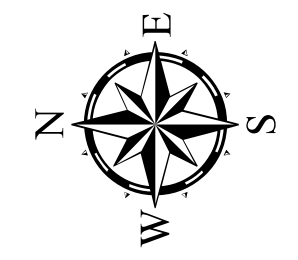
IN COOPERATION WITH
U.S. DEPARTMENT OF TRANSPORTATION
FEDERAL HIGHWAY ADMINISTRATION



1 in = 2,800 ft

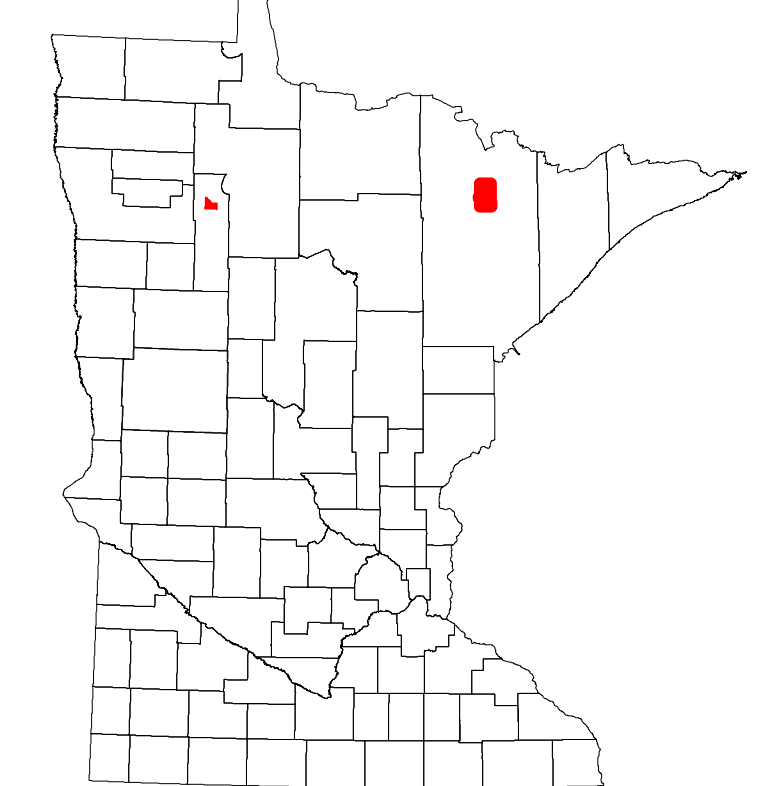
2024

Projection:
Transverse Mercator
NAD 1986
UTM Zone 15

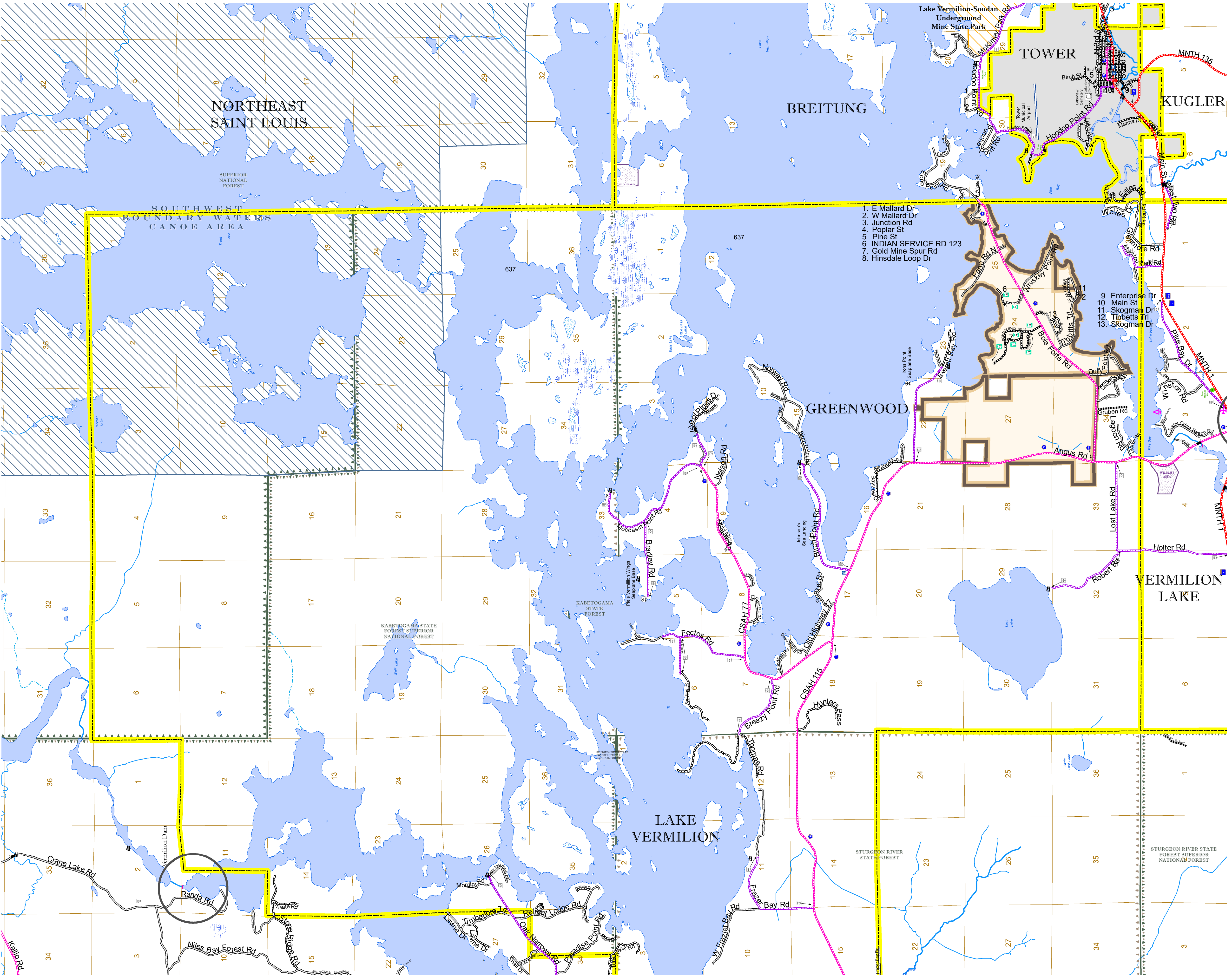


North American Datum
of 1986

ROAD AND ROADWAY FEATURES		BOUNDARY FEATURES	
INTERSTATE	CONCRETE	TRIBAL LAND	STATE OF MINNESOTA
US HIGHWAY	BITUMINOUS	COUNTY	MUNICIPALITY
MN HIGHWAY	GRAVEL	UNORGANIZED TERRITORY	FEDERAL ADJUSTED URBAN AREA (2014)
COUNTY STATE AID HIGHWAY	DIRT/UNIMPROVED	CIVIL TOWNSHIP	CONGRESSIONAL TOWNSHIP
COUNTY ROAD	OTHER	SECTION	MILITARY
TOWNSHIP ROAD	UNKNOWN	VOYAGEURS NATIONAL PARK	BOUNDARY WATERS CANOE AREA WILDERNESS
UNORGANIZED TERRITORY ROAD	RAMP OR CONNECTOR	STATE PARK	NATIONAL FOREST
OTHER ROADS:	INTERSTATE EXIT	NATIONAL AND STATE FOREST	STATE FOREST
Municipal	GREAT RIVER ROAD	WILDLIFE REFUGUE AREA	WILDLIFE MANAGEMENT AREA
Private	AVIATION FEATURES	WILDLIFE REFUGUE AREA	WILDLIFE MANAGEMENT AREA
National Monument	COMMERCIAL AIRPORT	WILDLIFE REFUGUE AREA	WILDLIFE MANAGEMENT AREA
State Forest	GENERAL AIRPORT	WILDLIFE REFUGUE AREA	WILDLIFE MANAGEMENT AREA
National Park	AIRSTRIP	WILDLIFE REFUGUE AREA	WILDLIFE MANAGEMENT AREA
National Wildlife Refuge	SEAPLANE	WILDLIFE REFUGUE AREA	WILDLIFE MANAGEMENT AREA
State Game	AIRPORT RUNWAY	WILDLIFE REFUGUE AREA	WILDLIFE MANAGEMENT AREA
State Park	RAILROAD AND RAILWAY FEATURES	WILDLIFE REFUGUE AREA	WILDLIFE MANAGEMENT AREA
Present	EMPIRE BUILDER STATION (AMTRAK)	WILDLIFE REFUGUE AREA	WILDLIFE MANAGEMENT AREA
	NORTHSTAR STATION (COMPUTER)	WILDLIFE REFUGUE AREA	WILDLIFE MANAGEMENT AREA
	LIGHT RAIL	WILDLIFE REFUGUE AREA	WILDLIFE MANAGEMENT AREA
	BLUE LINE	WILDLIFE REFUGUE AREA	WILDLIFE MANAGEMENT AREA
	GREEN LINE	WILDLIFE REFUGUE AREA	WILDLIFE MANAGEMENT AREA
	INFRASTRUCTURE FEATURES	WILDLIFE REFUGUE AREA	WILDLIFE MANAGEMENT AREA
	LONG BRIDGE (200' OR GREATER SPAN)	WILDLIFE REFUGUE AREA	WILDLIFE MANAGEMENT AREA
	MAJOR BRIDGE (20' TO 200' SPAN)	WILDLIFE REFUGUE AREA	WILDLIFE MANAGEMENT AREA
	MINOR BRIDGE (5' TO 20' SPAN)	WILDLIFE REFUGUE AREA	WILDLIFE MANAGEMENT AREA
	DAM	WILDLIFE REFUGUE AREA	WILDLIFE MANAGEMENT AREA
	LOCK AND DAM	WILDLIFE REFUGUE AREA	WILDLIFE MANAGEMENT AREA
	CITY CENTERS	WILDLIFE REFUGUE AREA	WILDLIFE MANAGEMENT AREA
	STATE CAPITAL	WILDLIFE REFUGUE AREA	WILDLIFE MANAGEMENT AREA
	COUNTY SEAT	WILDLIFE REFUGUE AREA	WILDLIFE MANAGEMENT AREA
	CITY CENTER	WILDLIFE REFUGUE AREA	WILDLIFE MANAGEMENT AREA
	UNINCORPORATED COMMUNITY	WILDLIFE REFUGUE AREA	WILDLIFE MANAGEMENT AREA
	PUBLIC SERVICE FEATURES	WILDLIFE REFUGUE AREA	WILDLIFE MANAGEMENT AREA
	MNDOT OFFICE	WILDLIFE REFUGUE AREA	WILDLIFE MANAGEMENT AREA
	MNDOT TRUCK STATION	WILDLIFE REFUGUE AREA	WILDLIFE MANAGEMENT AREA
	HIGHWAY PATROL DISTRICT OFFICE	WILDLIFE REFUGUE AREA	WILDLIFE MANAGEMENT AREA
	STATE TRAVEL INFORMATION CENTER	WILDLIFE REFUGUE AREA	WILDLIFE MANAGEMENT AREA
	REST AREA (FULL SERVICE)	WILDLIFE REFUGUE AREA	WILDLIFE MANAGEMENT AREA
	REST AREA (VAULT TOILET)	WILDLIFE REFUGUE AREA	WILDLIFE MANAGEMENT AREA
	WAYSIDE (VAULT OR PIT TOILET)	WILDLIFE REFUGUE AREA	WILDLIFE MANAGEMENT AREA
	PARK AND RIDE LOT	WILDLIFE REFUGUE AREA	WILDLIFE MANAGEMENT AREA
	PORT OF ENTRY	WILDLIFE REFUGUE AREA	WILDLIFE MANAGEMENT AREA
	PUBLIC ACCESS POINT	WILDLIFE REFUGUE AREA	WILDLIFE MANAGEMENT AREA
	MN STATE COLLEGE AND UNIVERSITY SYSTEM (MNSCU)	WILDLIFE REFUGUE AREA	WILDLIFE MANAGEMENT AREA
	UNIVERSITY OF MN SYSTEM	WILDLIFE REFUGUE AREA	WILDLIFE MANAGEMENT AREA
	FAIRGROUNDS	WILDLIFE REFUGUE AREA	WILDLIFE MANAGEMENT AREA
	CULTURAL FEATURES	WILDLIFE REFUGUE AREA	WILDLIFE MANAGEMENT AREA
	STATE HISTORICAL MARKER	WILDLIFE REFUGUE AREA	WILDLIFE MANAGEMENT AREA
	HISTORIC DISTRICT	WILDLIFE REFUGUE AREA	WILDLIFE MANAGEMENT AREA
	HISTORIC SITE	WILDLIFE REFUGUE AREA	WILDLIFE MANAGEMENT AREA
	MONUMENT	WILDLIFE REFUGUE AREA	WILDLIFE MANAGEMENT AREA
	HYDROLOGIC FEATURES	WILDLIFE REFUGUE AREA	WILDLIFE MANAGEMENT AREA
	STREAM (PERMANENT)	WILDLIFE REFUGUE AREA	WILDLIFE MANAGEMENT AREA
	STREAM (INTERMITTENT)	WILDLIFE REFUGUE AREA	WILDLIFE MANAGEMENT AREA
	LAKE, POND OR RESERVOIR	WILDLIFE REFUGUE AREA	WILDLIFE MANAGEMENT AREA
	DRAINAGE DITCH	WILDLIFE REFUGUE AREA	WILDLIFE MANAGEMENT AREA
	WETLAND	WILDLIFE REFUGUE AREA	WILDLIFE MANAGEMENT AREA
	ISLAND OR LAND	WILDLIFE REFUGUE AREA	WILDLIFE MANAGEMENT AREA
	REGIONAL WATERSHED	WILDLIFE REFUGUE AREA	WILDLIFE MANAGEMENT AREA



Population (U.S. Census 2010): 939



1. E Mallard Dr
2. W Mallard Dr
3. Junction Rd
4. Poplar St
5. Pine St
6. INDIAN SERVICE RD 123
7. Gold Mine Spur Rd
8. Hinsdale Loop Dr

9. Enterprise Dr
10. Main St
11. Skogman Dr
12. Tibbetts Rd
13. Skogman Dr

To request information from this document in an alternative format, call 651-366-4718 or 1-800-657-3774 (Greater Minnesota); 711 or 1-800-627-3529 (Minnesota Relay). You may also send an e-mail to ADArequest.dot@state.mn.us. (Please request at least one week in advance.)