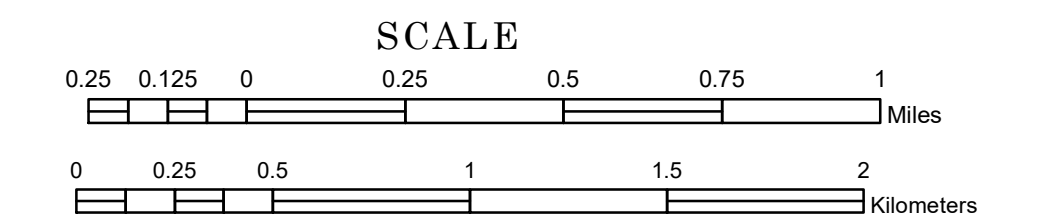


TOWNSHIP OF TERREBONNE

PREPARED BY THE
MINNESOTA DEPARTMENT OF TRANSPORTATION
OFFICE OF TRANSPORTATION SYSTEM MANAGEMENT

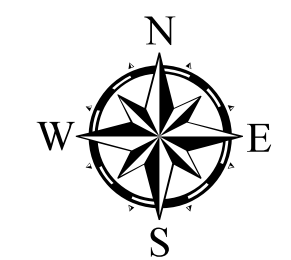
IN COOPERATION WITH
U.S. DEPARTMENT OF TRANSPORTATION
FEDERAL HIGHWAY ADMINISTRATION



1 in = 1,600 ft

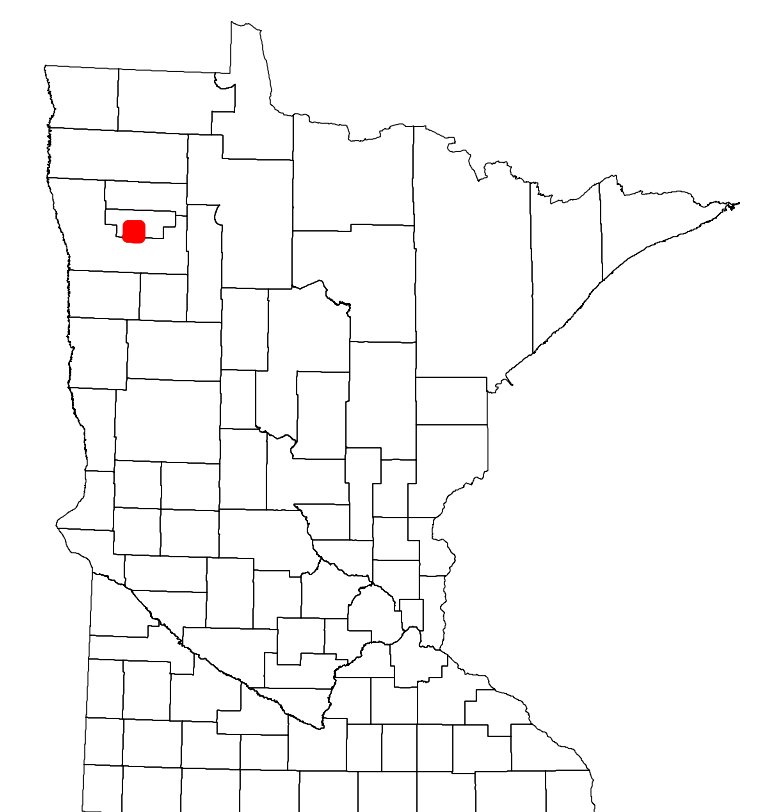
2023

Projection:
Transverse Mercator
NAD 1986
UTM Zone 15

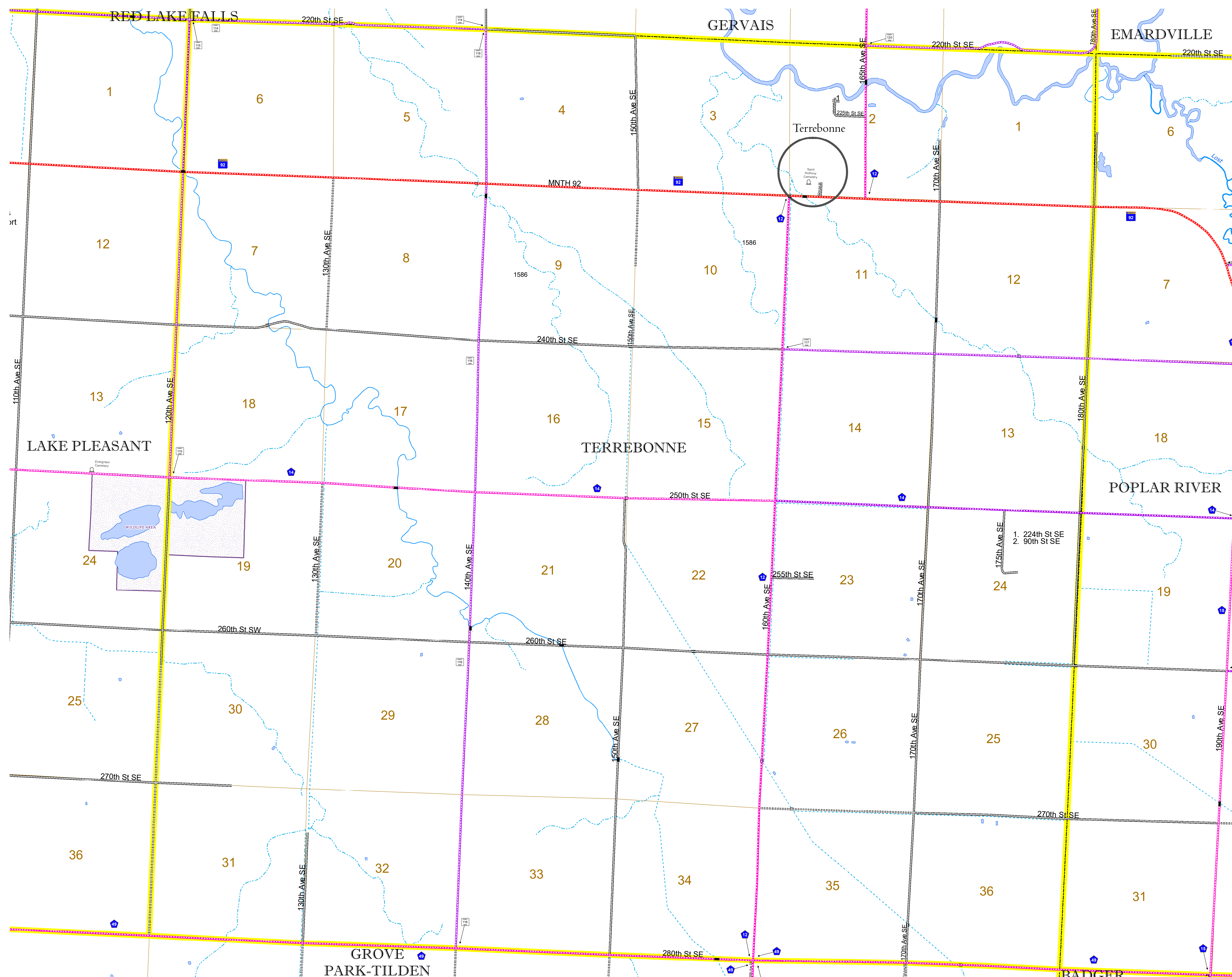


North American Datum
of 1986

ROAD AND ROADWAY FEATURES		BOUNDARY FEATURES	
INTERSTATE	CONCRETE	TRIBAL LAND	STATE OF MINNESOTA
US HIGHWAY	BITUMINOUS	COUNTY	MUNICIPALITY
MN HIGHWAY	GRAVEL	UNORGANIZED TERRITORY	CONGRESSIONAL TOWNSHIP
COUNTY STATE AID HIGHWAY	DIRT/UNIMPROVED	FEDERAL ADJUSTED URBAN AREA (2014)	CIVIL TOWNSHIP
COUNTY ROAD	OTHER	CIVIL TOWNSHIP	CONGRESSIONAL TOWNSHIP
TOWNSHIP ROAD	UNKNOWN	SECTION	MILITARY
UNORGANIZED TERRITORY ROAD		VOYAGEURS NATIONAL PARK	BOUNDARY WATERS CANOE AREA WILDERNESS
OTHER ROADS		STATE PARK	REGIONAL PARK
Municipal		NATIONAL FOREST	NATIONAL AND STATE FOREST
Private		STATE FOREST	WILDLIFE REFUGUE AREA
National Monument		WILDLIFE REFUGUE AREA	WILDLIFE MANAGEMENT AREA
National Park		WILDLIFE MANAGEMENT AREA	HYDROLOGIC FEATURES
National Wildlife Refuge		RIVER OR STREAM (PERMANENT)	LAKE, POND OR RESERVOIR
State Park		LAKE, POND OR RESERVOIR	STREAM (INTERMITTENT)
Preserve		STREAM (INTERMITTENT)	DRAINAGE DITCH
		WETLAND	ISLAND OR LAND
		REGIONAL WATERSHED	



Population (U.S. Census 2010): 147



To request information from this document in an alternative format, call 651-366-4718 or 1-800-657-3774 (Greater Minnesota); 711 or 1-800-627-3529 (Minnesota Relay). You may also send an e-mail to ADRequest.dot@state.mn.us. (Please request at least one week in advance.)