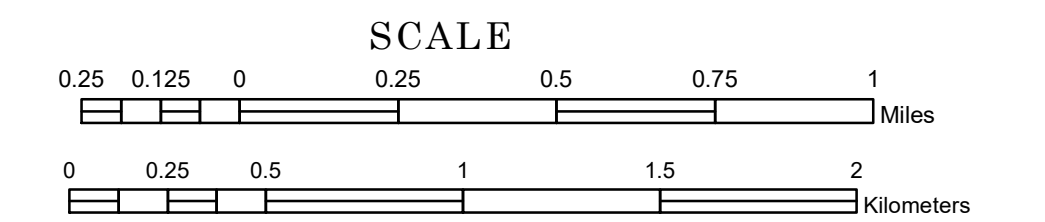


TOWNSHIP OF BANGOR

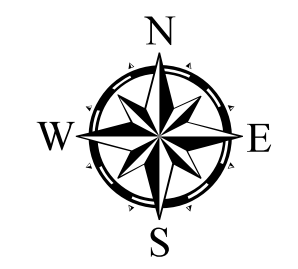
PREPARED BY THE
MINNESOTA DEPARTMENT OF TRANSPORTATION
OFFICE OF TRANSPORTATION SYSTEM MANAGEMENT

IN COOPERATION WITH
U.S. DEPARTMENT OF TRANSPORTATION
FEDERAL HIGHWAY ADMINISTRATION



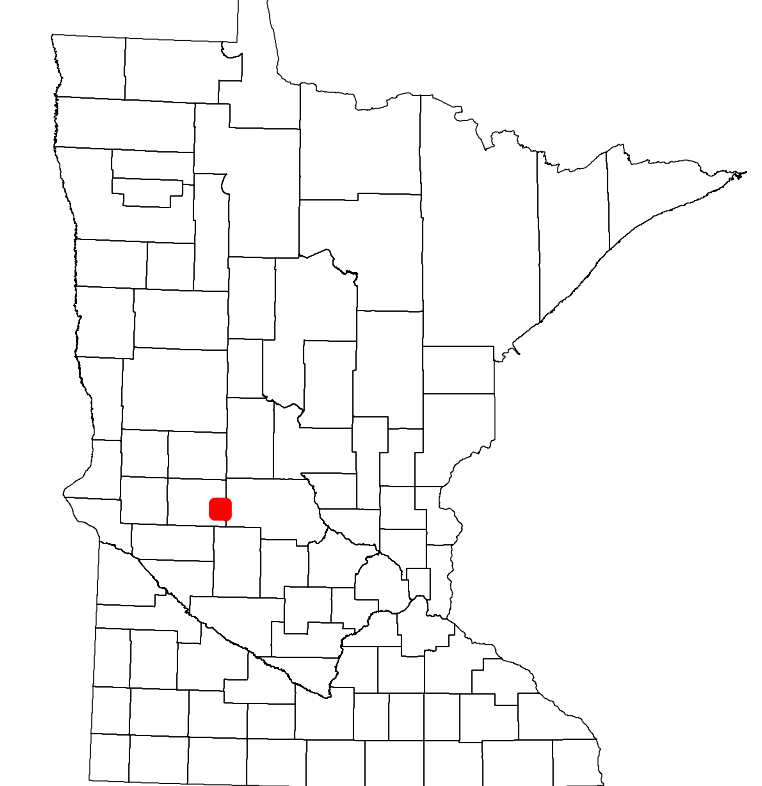
2023

Projection:
Transverse Mercator
NAD 1986
UTM Zone 15

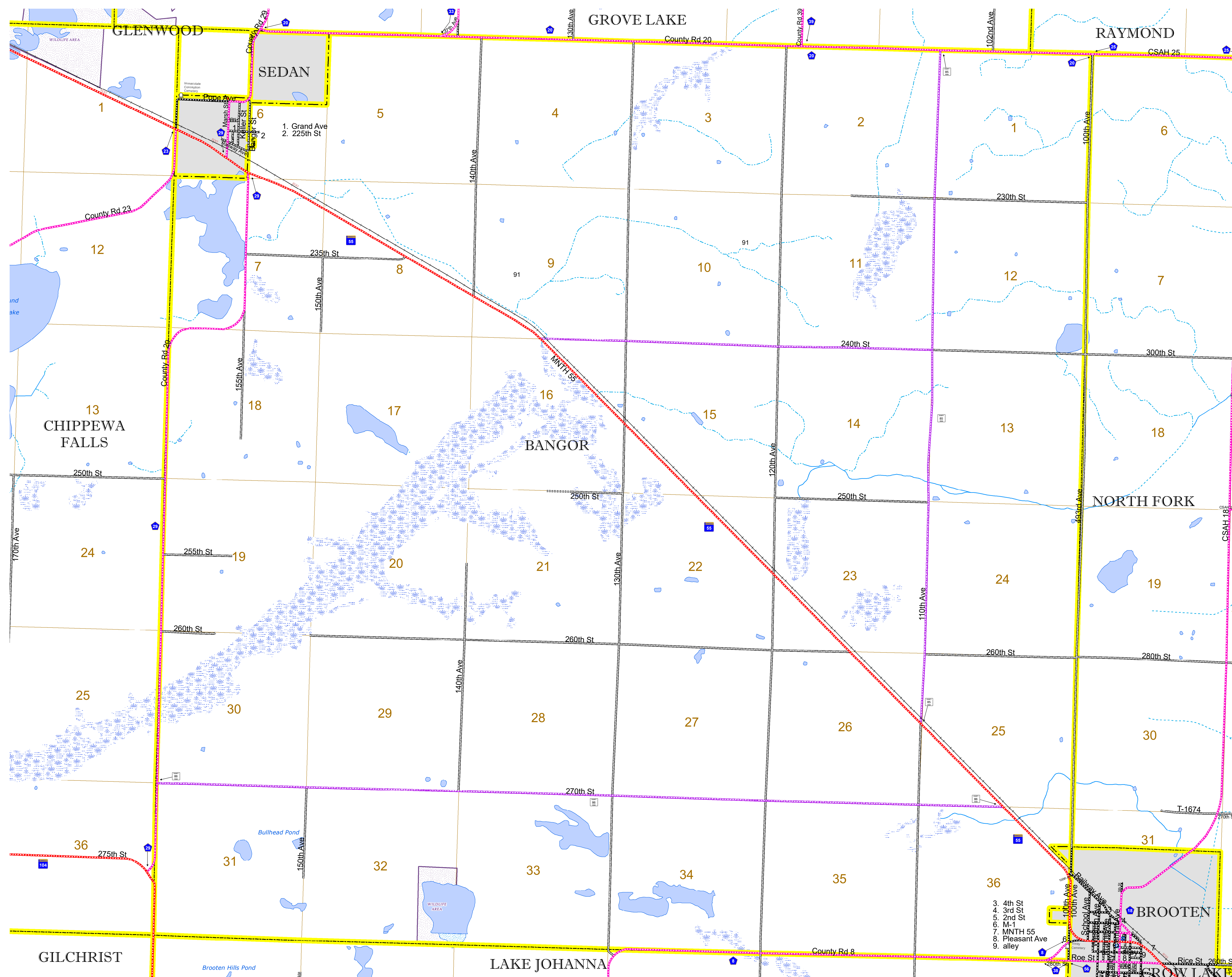


North American Datum
of 1986

ROAD AND ROADWAY FEATURES		BOUNDARY FEATURES	
INTERSTATE	CONCRETE	TRIAL LAND	TRIBAL LAND
US HIGHWAY	BITUMINOUS	STATE OF MINNESOTA	STATE OF MINNESOTA
MN HIGHWAY	GRAVEL	COUNTY	COUNTY
COUNTY STATE AID HIGHWAY	DIRT/UNIMPROVED	MUNICIPALITY	MUNICIPALITY
COUNTY ROAD	OTHER	UNORGANIZED TERRITORY	UNORGANIZED TERRITORY
TOWNSHIP ROAD	UNKNOWN	FEDERAL ADJUSTED URBAN AREA (2014)	FEDERAL ADJUSTED URBAN AREA (2014)
UNORGANIZED TERRITORY ROAD		CIVIL TOWNSHIP	CIVIL TOWNSHIP
OTHER ROADS		CONGRESSIONAL TOWNSHIP	CONGRESSIONAL TOWNSHIP
Municipal	RAMP OR CONNECTOR	SECTION	SECTION
Private	INTERSTATE EXIT	MILITARY	MILITARY
National Monument		VOYAGEURS NATIONAL PARK	VOYAGEURS NATIONAL PARK
State Forest		BOUNDARY WATERS CANOE AREA WILDERNESS	BOUNDARY WATERS CANOE AREA WILDERNESS
Nature Service		STATE PARK	STATE PARK
National Wildlife		REGIONAL PARK	REGIONAL PARK
State Game		NATIONAL FOREST	NATIONAL FOREST
Military		NATIONAL AND STATE FOREST	NATIONAL AND STATE FOREST
		STATE FOREST	STATE FOREST
		NATIONAL TRAIL	NATIONAL TRAIL
		WILDLIFE REFUGUE AREA	WILDLIFE REFUGUE AREA
		WILDLIFE MANAGEMENT AREA	WILDLIFE MANAGEMENT AREA
		HYDROLOGIC FEATURES	HYDROLOGIC FEATURES
		LAKE, POND OR RESERVOIR	LAKE, POND OR RESERVOIR
		STREAM (INTERMITTENT)	STREAM (INTERMITTENT)
		DRAINAGE DITCH	DRAINAGE DITCH
		WETLAND	WETLAND
		ISLAND OR LAND	ISLAND OR LAND
		REGIONAL WATERSHED	REGIONAL WATERSHED



Population (U.S. Census 2010): 185



To request information from this document in an alternative format, call 651-366-4718 or 1-800-657-3774 (Greater Minnesota); 711 or 1-800-627-3529 (Minnesota Relay). You may also send an e-mail to ADarequest.dot@state.mn.us. (Please request at least one week in advance.)