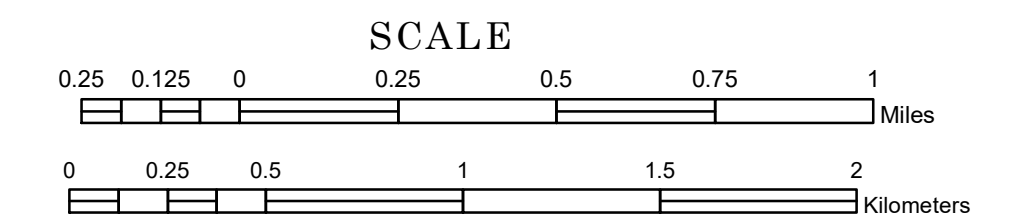


# TOWNSHIP OF KERTSONVILLE

PREPARED BY THE  
MINNESOTA DEPARTMENT OF TRANSPORTATION  
OFFICE OF TRANSPORTATION SYSTEM MANAGEMENT

IN COOPERATION WITH  
U.S. DEPARTMENT OF TRANSPORTATION  
FEDERAL HIGHWAY ADMINISTRATION



1 in = 1,600 ft

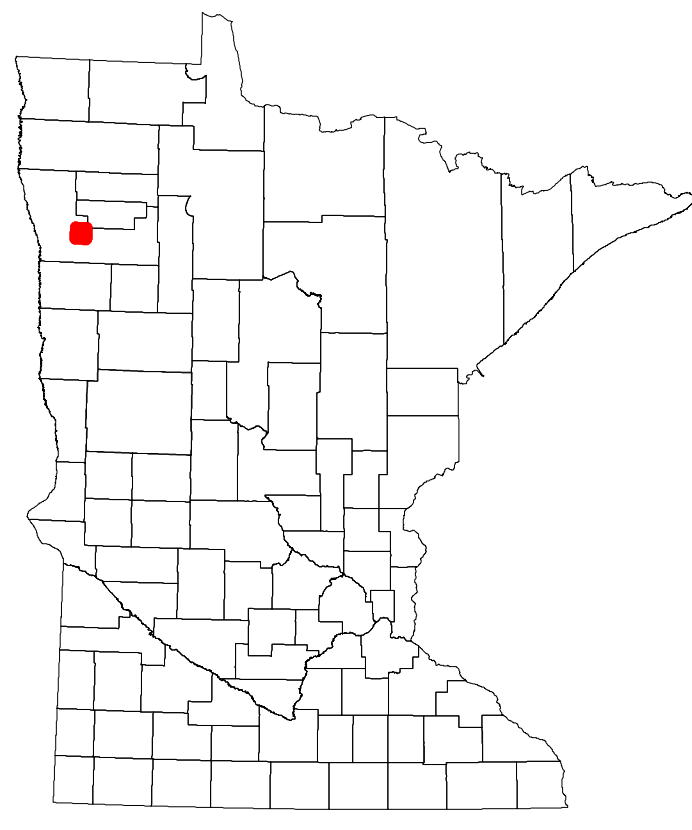
2024

Projection:  
Transverse Mercator  
NAD 1986  
UTM Zone 15

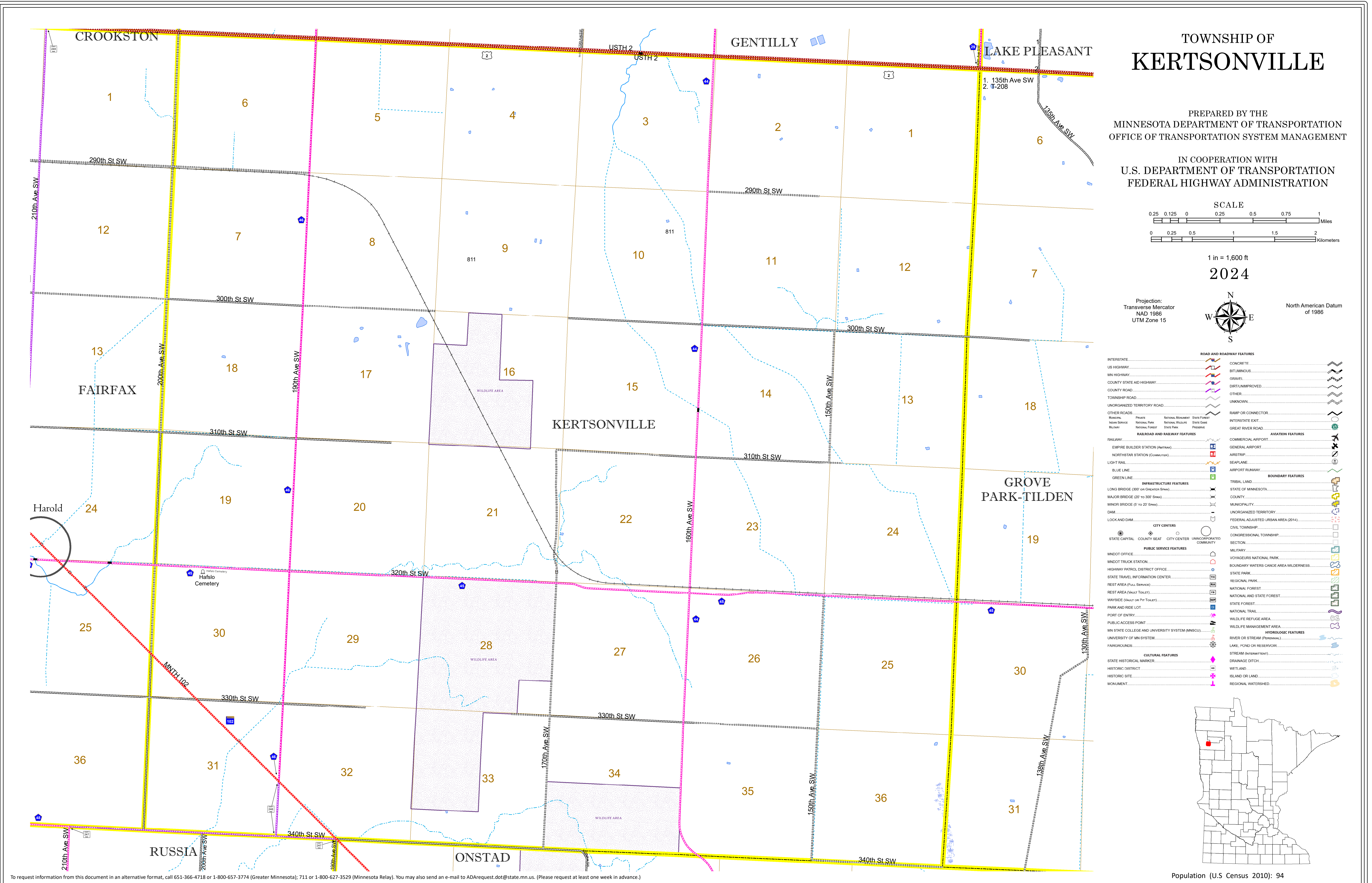


North American Datum  
of 1986

ROAD AND ROADWAY FEATURES	RAILROAD AND RAILWAY FEATURES	CITY CENTERS	PUBLIC SERVICE FEATURES	CULTURAL FEATURES	BOUNDARY FEATURES	HYDROLOGIC FEATURES
INTERSTATE	EMPIRE BUILDER STATION (AMTRAK)	STATE CAPITAL	MNDOT OFFICE	STATE HISTORICAL MARKER	TRIBAL LAND	WILDLIFE REFUGE AREA
US HIGHWAY	NORTHSTAR STATION (COMMUTER)	COUNTY SEAT	HIGHWAY PATROL DISTRICT OFFICE	HISTORIC DISTRICT	STATE OF MINNESOTA	WILDLIFE MANAGEMENT AREA
MN HIGHWAY	LIGHT RAIL	CITY CENTER	STATE TRAVEL INFORMATION CENTER	HISTORIC SITE	COUNTY	WILDLIFE REFUGED AREA
COUNTY STATE AID HIGHWAY	BLUE LINE	UNINCORPORATED COMMUNITY	REST AREA (VAULT TOILET)	MONUMENT	MUNICIPALITY	RIVER OR STREAM (PERENNIAL)
COUNTY ROAD	GREEN LINE		WAYSIDE (VAULT OR PITY TOILET)		UNORGANIZED TERRITORY	LAKE, POND OR RESERVOIR
TOWNSHIP ROAD			PARK AND RIDE LOT		FEDERAL ADJUSTED URBAN AREA (2014)	STREAM (INTERMITTENT)
UNORGANIZED TERRITORY ROAD			PORT OF ENTRY		CIVIL TOWNSHIP	DRAINAGE DITCH
OTHER ROADS			PUBLIC ACCESS POINT		CONGRESSIONAL TOWNSHIP	WETLAND
Municipal			MN STATE COLLEGE AND UNIVERSITY SYSTEM (MNSCU)		SECTION	ISLAND OR LAND
Private			UNIVERSITY OF MN SYSTEM		MILITARY	REGIONAL WATERSHED
National Monument			FAIRGROUNDS		VOYAGEURS NATIONAL PARK	
State Forest					BOUNDARY WATERS CANOE AREA WILDERNESS	
National Wildlife Refuge					STATE PARK	
State Park					REGIONAL PARK	
Preserve					NATIONAL FOREST	
					NATIONAL AND STATE FOREST	
					STATE FOREST	
					NATIONAL TRAIL	
					WILDLIFE REFUGED AREA	
					WILDLIFE MANAGEMENT AREA	



Population (U.S. Census 2010): 94



To request information from this document in an alternative format, call 651-366-4718 or 1-800-657-3774 (Greater Minnesota); 711 or 1-800-627-3529 (Minnesota Relay). You may also send an e-mail to ADAREquest.dot@state.mn.us. (Please request at least one week in advance.)