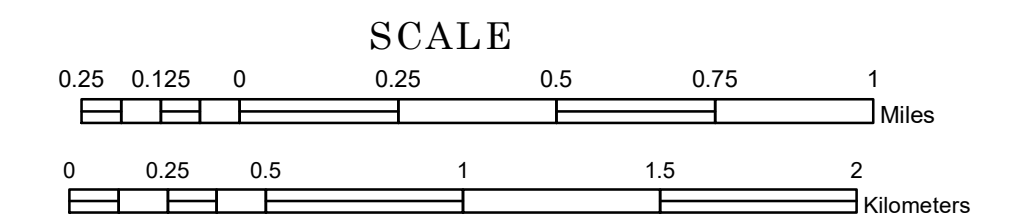


TOWNSHIP OF GARDEN

PREPARED BY THE
MINNESOTA DEPARTMENT OF TRANSPORTATION
OFFICE OF TRANSPORTATION SYSTEM MANAGEMENT

IN COOPERATION WITH
U.S. DEPARTMENT OF TRANSPORTATION
FEDERAL HIGHWAY ADMINISTRATION



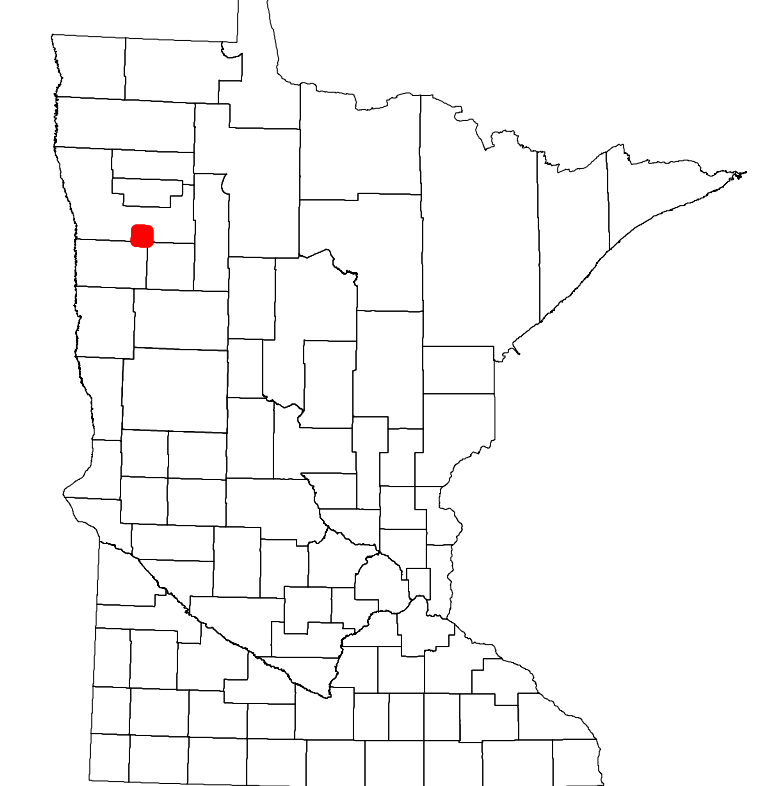
1 in = 1,600 ft
2024

Projection:
Transverse Mercator
NAD 1986
UTM Zone 15

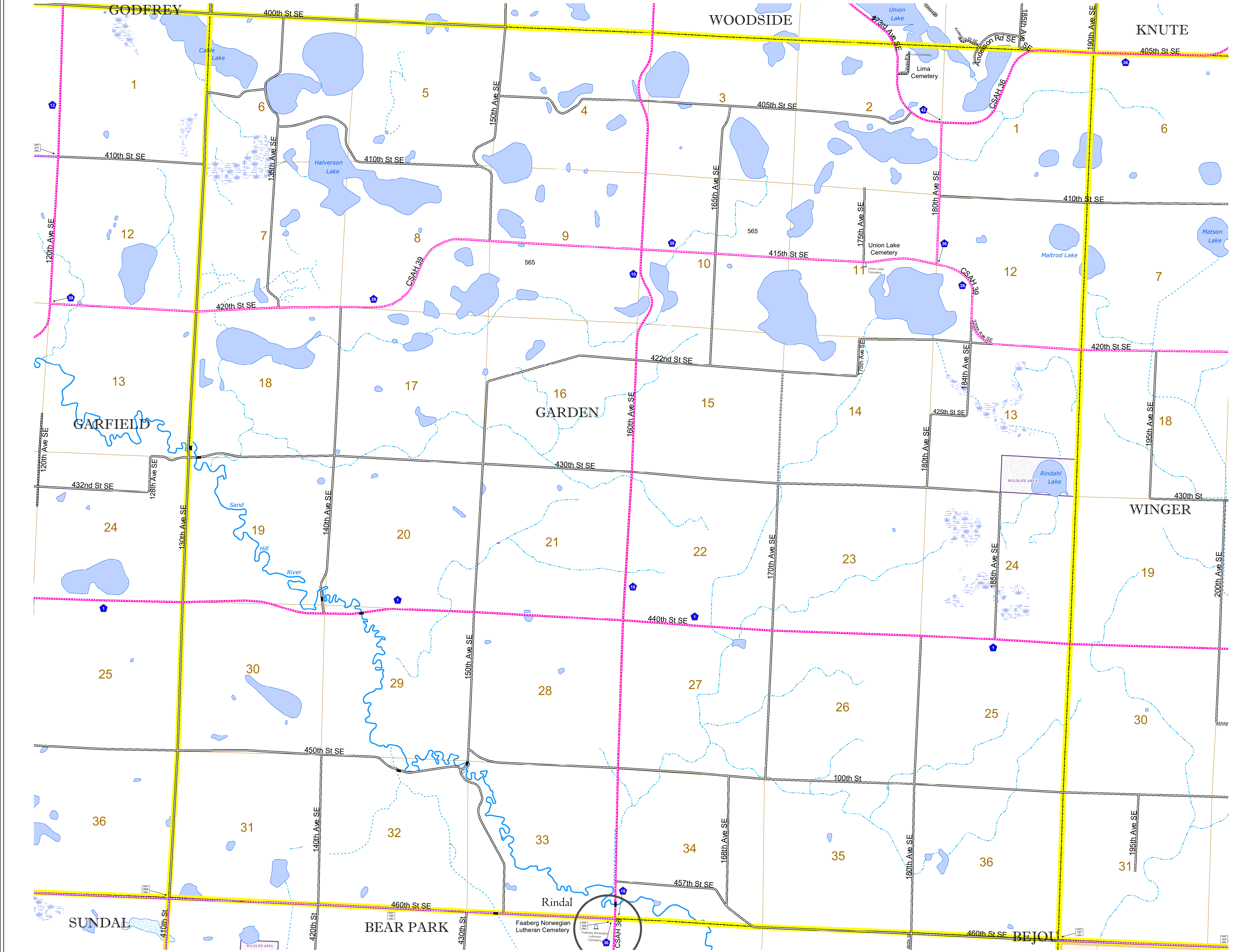


North American Datum
of 1986

ROAD AND ROADWAY FEATURES		BOUNDARY FEATURES	
INTERSTATE		CONCRETE	
US HIGHWAY		BITUMINOUS	
MN HIGHWAY		GRAVEL	
COUNTY STATE AID HIGHWAY		DIRT/UNIMPROVED	
COUNTY ROAD		OTHER	
TOWNSHIP ROAD		UNKNOWN	
UNORGANIZED TERRITORY ROAD			
OTHER ROADS		RAMP OR CONNECTOR	
Municipal		INTERSTATE EXIT	
Private		COMMERCIAL AIRPORT	
National Monument		GENERAL AIRPORT	
National Wildlife Refuge		AIRSTRIP	
State Park		SEAPLANE	
Preserve		AIRPORT RUNWAY	
RAILROAD AND RAILWAY FEATURES		AVIATION FEATURES	
EMPIRE BUILDER STATION (AMTRAK)		GENERAL AIRPORT	
NORTHSTAR STATION (COMPUTER)		AIRSTRIP	
LIGHT RAIL		SEAPLANE	
BLUE LINE		AIRPORT RUNWAY	
GREEN LINE		BOUNDARY FEATURES	
INFRASTRUCTURE FEATURES		TRIBAL LAND	
LONG BRIDGE (200' OR GREATER SPAN)		STATE OF MINNESOTA	
MAJOR BRIDGE (20' TO 200' SPAN)		COUNTY	
MINOR BRIDGE (5' TO 20' SPAN)		MUNICIPALITY	
DAM		UNORGANIZED TERRITORY	
LOCK AND DAM		FEDERAL ADJUSTED URBAN AREA (2014)	
CITY CENTERS		CIVIL TOWNSHIP	
STATE CAPITAL		CONGRESSIONAL TOWNSHIP	
COUNTY SEAT		SECTION	
CITY CENTER		MILITARY	
UNINCORPORATED COMMUNITY		VOYAGEURS NATIONAL PARK	
PUBLIC SERVICE FEATURES		BOUNDARY WATERS CANOE AREA WILDERNESS	
MNDOT OFFICE		STATE PARK	
MNDOT TRUCK STATION		REGIONAL PARK	
HIGHWAY PATROL DISTRICT OFFICE		NATIONAL FOREST	
STATE TRAVEL INFORMATION CENTER		NATIONAL AND STATE FOREST	
REST AREA (Full Service)		STATE FOREST	
REST AREA (Vault Toilet)		NATIONAL TRAIL	
WAYSIDE (Vault or Pit Toilet)		WILDLIFE REFUGE AREA	
PARK AND RIDE LOT		WILDLIFE MANAGEMENT AREA	
PORT OF ENTRY		HYDROLOGIC FEATURES	
PUBLIC ACCESS POINT		RIVER OR STREAM (PERMANENT)	
MN STATE COLLEGE AND UNIVERSITY SYSTEM (MNSCU)		LAKE, POND OR RESERVOIR	
UNIVERSITY OF MN SYSTEM		STREAM (INTERMITTENT)	
FAIRGROUNDS		DRAINAGE DITCH	
CULTURAL FEATURES		WETLAND	
STATE HISTORICAL MARKER		ISLAND OR LAND MONUMENT	
HISTORIC DISTRICT		REGIONAL WATERSHED	
HISTORIC SITE			
MONUMENT			



Population (U.S. Census 2010): 212



To request information from this document in an alternative format, call 651-366-4718 or 1-800-657-3774 (Greater Minnesota); 711 or 1-800-627-3529 (Minnesota Relay). You may also send an e-mail to ADRequest.dot@state.mn.us. (Please request at least one week in advance.)