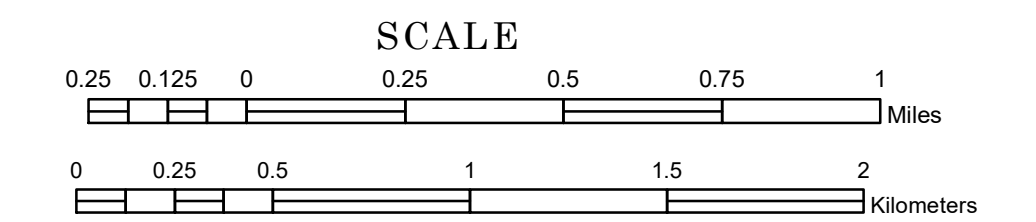


TOWNSHIP OF OAK VALLEY

PREPARED BY THE
MINNESOTA DEPARTMENT OF TRANSPORTATION
OFFICE OF TRANSPORTATION SYSTEM MANAGEMENT

IN COOPERATION WITH
U.S. DEPARTMENT OF TRANSPORTATION
FEDERAL HIGHWAY ADMINISTRATION



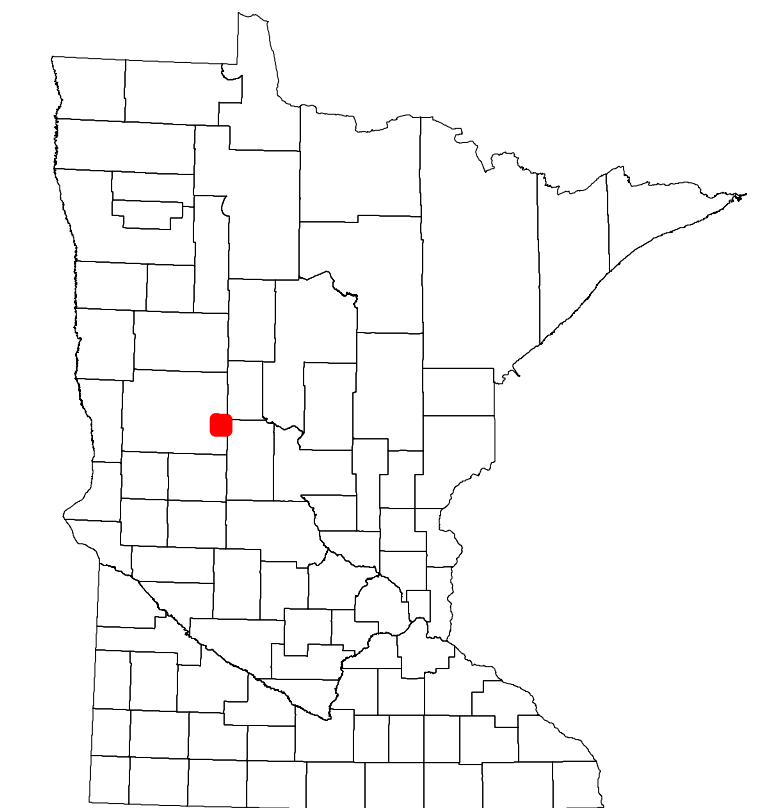
2023

Projection:
Transverse Mercator
NAD 1986
UTM Zone 15

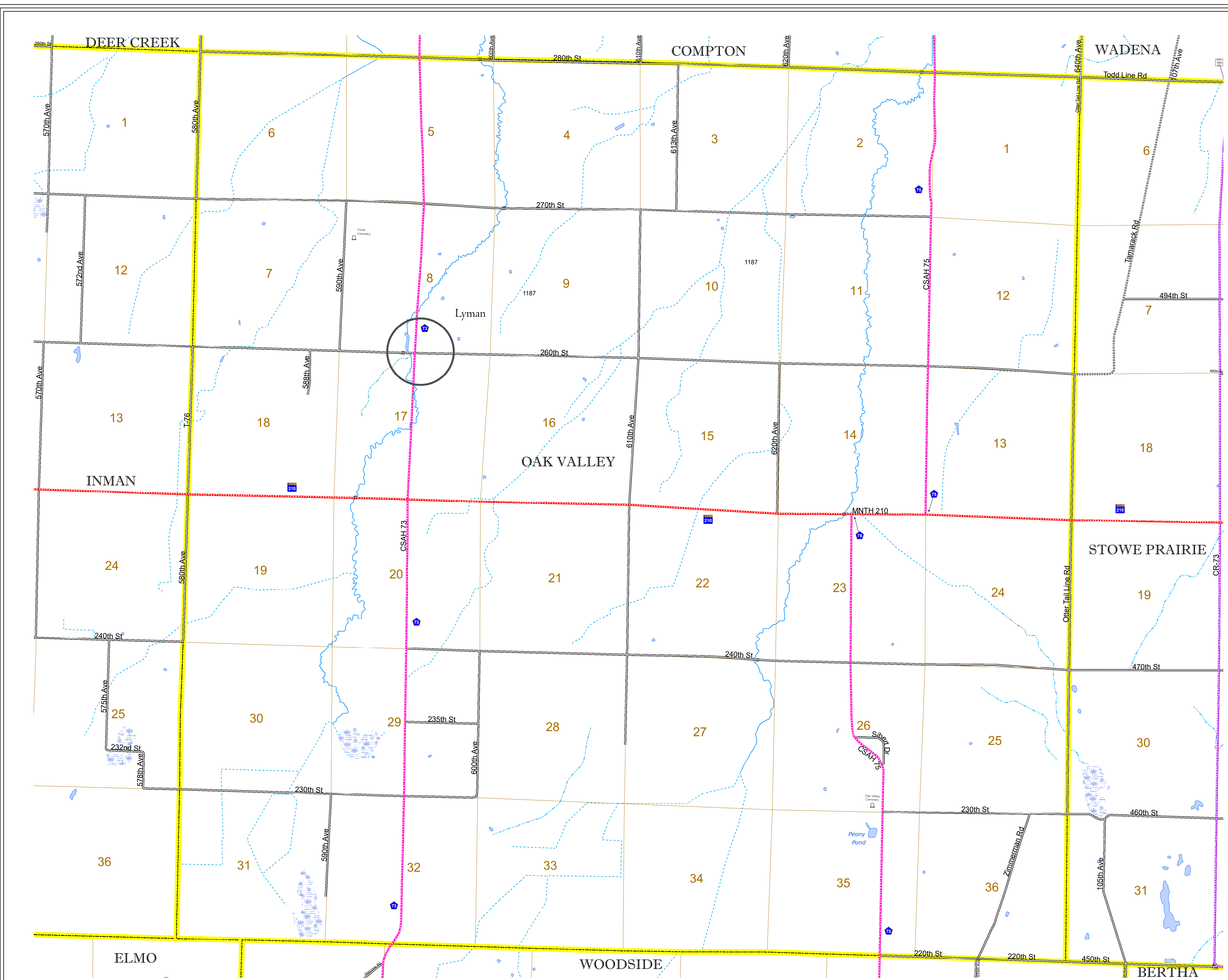


North American Datum
of 1986

ROAD AND ROADWAY FEATURES		AVIATION FEATURES	
INTERSTATE	CONCRETE	COMMERCIAL AIRPORT	GENERAL AIRPORT
US HIGHWAY	BITUMINOUS	AIRSTRIP	AIRSTRIP
MN HIGHWAY	GRAVEL	SEAPLANE	AIRPORT RUNWAY
COUNTY STATE AID HIGHWAY	DIRT/UNIMPROVED	OTHER	UNKNOWN
COUNTY ROAD	OTHER	UNKNOWN	UNKNOWN
TOWNSHIP ROAD	UNKNOWN	UNKNOWN	UNKNOWN
UNORGANIZED TERRITORY ROAD	UNKNOWN	UNKNOWN	UNKNOWN
OTHER ROADS	RAMP OR CONNECTOR	INTERSTATE EXIT	INTERSTATE EXIT
Municipal	National Park	National Forest	State Park
Private	National Monument	State Forest	State Park
Nature Service	National Wildlife Refuge	State Game	Preserve
Military	National Forest	State Park	Preserve
RAILROAD AND RAILWAY FEATURES		BOUNDARY FEATURES	
EMPIRE BUILDER STATION (AMTRAK)	NORTHSTAR STATION (COMMUTER)	TRIBAL LAND	STATE OF MINNESOTA
LIGHT RAIL	BLUE LINE	GREEN LINE	INFRASTRUCTURE FEATURES
LONG BRIDGE (300' OR GREATER SPAN)	MAJOR BRIDGE (20' TO 300' SPAN)	MINOR BRIDGE (5' TO 20' SPAN)	DAM
LOCK AND DAM	CITY CENTERS	STATE CAPITAL	COUNTY SEAT
CITY CENTER	CITY CENTER	UNINCORPORATED COMMUNITY	PUBLIC SERVICE FEATURES
MNDOT OFFICE	MNDOT TRUCK STATION	HIGHWAY PATROL DISTRICT OFFICE	STATE TRAVEL INFORMATION CENTER
REST AREA (FULL SERVICE)	REST AREA (VAULT TOILET)	WAYSIDE (VAULT OR PITY TOILET)	PARK AND RIDE LOT
PORT OF ENTRY	PUBLIC ACCESS POINT	MN STATE COLLEGE AND UNIVERSITY SYSTEM (MNSCU)	UNIVERSITY OF MN SYSTEM
FAIRGROUNDS	CULTURAL FEATURES	STATE HISTORICAL MARKER	HISTORIC DISTRICT
HISTORIC SITE	MONUMENT	HISTORIC DISTRICT	HISTORIC SITE
MONUMENT			



Population (U.S. Census 2010): 355



To request information from this document in an alternative format, call 651-366-4718 or 1-800-657-3774 (Greater Minnesota); 711 or 1-800-627-3529 (Minnesota Relay). You may also send an e-mail to ADARrequest.dot@state.mn.us. (Please request at least one week in advance.)