

# TOWNSHIP OF BEAR PARK

PREPARED BY THE  
MINNESOTA DEPARTMENT OF TRANSPORTATION  
OFFICE OF TRANSPORTATION SYSTEM MANAGEMENT

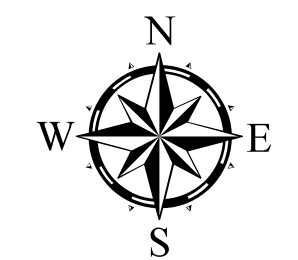
IN COOPERATION WITH  
U.S. DEPARTMENT OF TRANSPORTATION  
FEDERAL HIGHWAY ADMINISTRATION



1 in = 1,600 ft

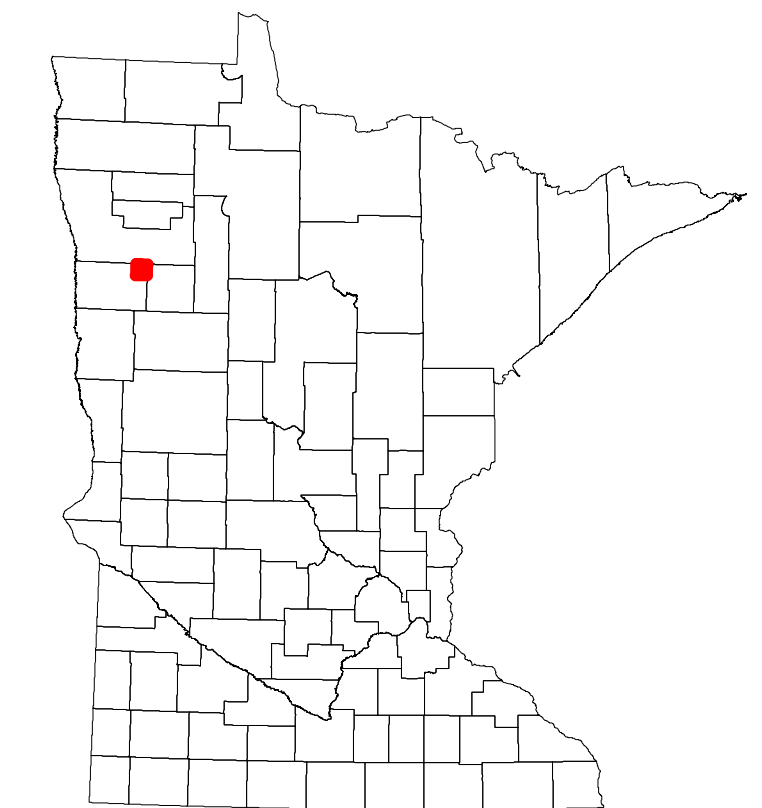
2023

Projection:  
Transverse Mercator  
NAD 1986  
UTM Zone 15

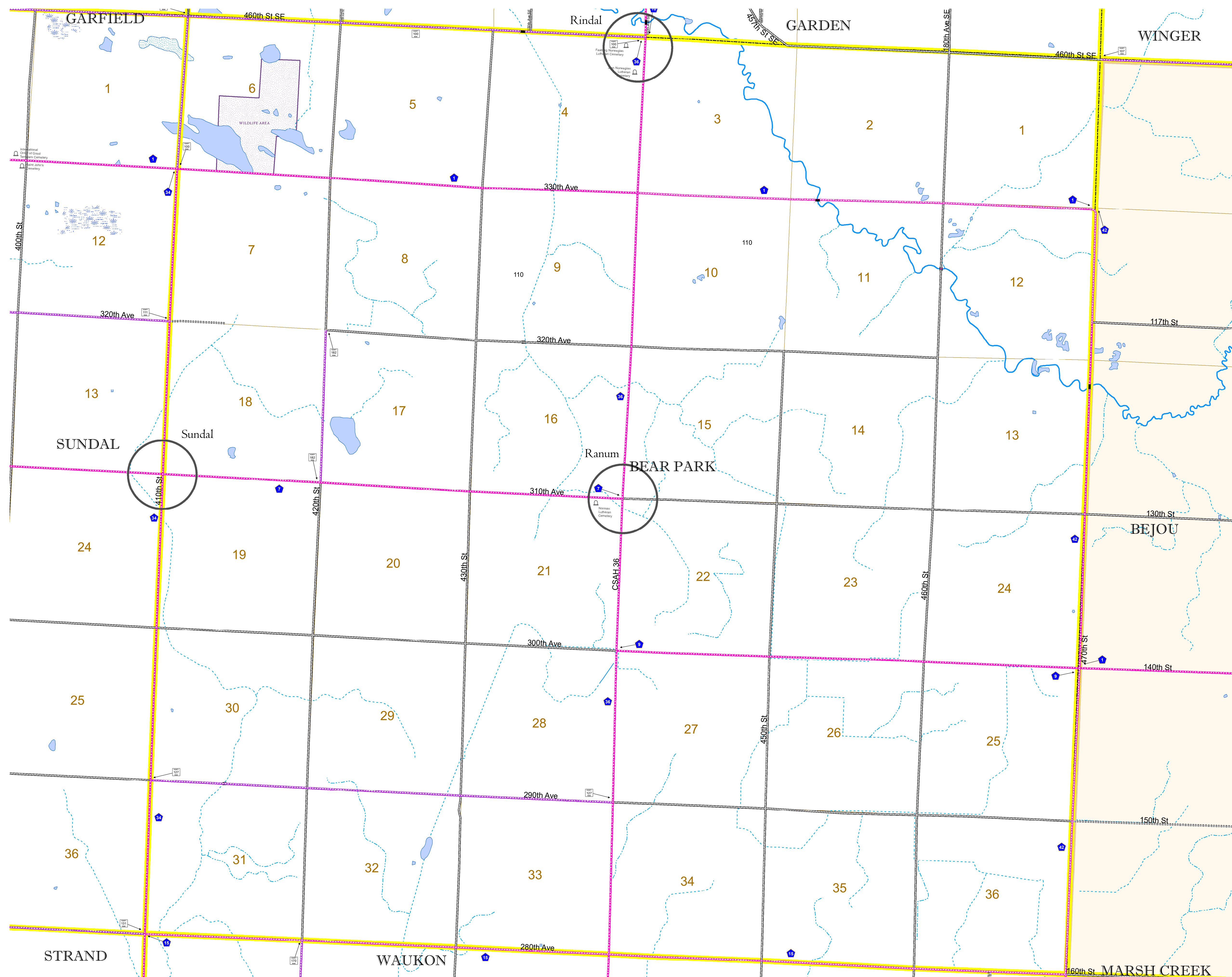


North American Datum  
of 1986

ROAD AND ROADWAY FEATURES		RAILROAD AND RAILWAY FEATURES		AVIATION FEATURES		BOUNDARY FEATURES	
INTERSTATE	CONCRETE	EMPIRE BUILDER STATION (AMTRAK)	COMMERCIAL AIRPORT	TRIBAL LAND	STATE OF MINNESOTA	COUNTY	MUNICIPALITY
US HIGHWAY	BITUMINOUS	NORTHSTAR STATION (COMMUTER)	GENERAL AIRPORT	STATE OF MINNESOTA	COUNTY	MUNICIPALITY	UNINCORPORATED TOWNSHIP
MN HIGHWAY	GRAVEL	LIGHT RAIL	AIRSTRIP	LONG BRIDGE (200' OR GREATER SPAN)	STATE OF MINNESOTA	COUNTY	CIVIL TOWNSHIP
COUNTY STATE AID HIGHWAY	DIRT/UNIMPROVED	BLUE LINE	SEAPLANE	MAJOR BRIDGE (20' TO 200' SPAN)	STATE OF MINNESOTA	COUNTY	CIVIL TOWNSHIP
COUNTY ROAD	OTHER	GREEN LINE	AIRPORT RUNWAY	MINOR BRIDGE (5' TO 20' SPAN)	STATE OF MINNESOTA	COUNTY	CIVIL TOWNSHIP
TOWNSHIP ROAD	UNKNOWN	INFRASTRUCTURE FEATURES	RAILROAD	DAM	STATE OF MINNESOTA	COUNTY	CIVIL TOWNSHIP
UNORGANIZED TERRITORY ROAD	UNKNOWN	LONG BRIDGE (200' OR GREATER SPAN)	EMPIRE BUILDER STATION (AMTRAK)	LOCK AND DAM	STATE OF MINNESOTA	COUNTY	CIVIL TOWNSHIP
OTHER ROADS	RAMP OR CONNECTOR	MAJOR BRIDGE (20' TO 200' SPAN)	NORTHSTAR STATION (COMMUTER)	CITY CENTERS	STATE OF MINNESOTA	COUNTY	CIVIL TOWNSHIP
MUNICIPAL	INTERSTATE EXIT	MINOR BRIDGE (5' TO 20' SPAN)	LIGHT RAIL	STATE CAPITAL	STATE OF MINNESOTA	COUNTY	CIVIL TOWNSHIP
PRIVATE	AVIATION FEATURES	DAM	BLUE LINE	COUNTY SEAT	STATE OF MINNESOTA	COUNTY	CIVIL TOWNSHIP
NATIONAL MONUMENT	COMMERCIAL AIRPORT	LOCK AND DAM	GREEN LINE	CITY CENTER	STATE OF MINNESOTA	COUNTY	CIVIL TOWNSHIP
STATE FOREST	GENERAL AIRPORT	CITY CENTERS	INFRASTRUCTURE FEATURES	UNINCORPORATED COMMUNITY	STATE OF MINNESOTA	COUNTY	CIVIL TOWNSHIP
STATE GAME	AIRSTRIP	STATE CAPITAL	LONG BRIDGE (200' OR GREATER SPAN)	PUBLIC SERVICE FEATURES	STATE OF MINNESOTA	COUNTY	CIVIL TOWNSHIP
STATE PARK	SEAPLANE	COUNTY SEAT	MAJOR BRIDGE (20' TO 200' SPAN)	MNDOT OFFICE	STATE OF MINNESOTA	COUNTY	CIVIL TOWNSHIP
STATE TRAIL	AIRPORT RUNWAY	CITY CENTER	MINOR BRIDGE (5' TO 20' SPAN)	MNDOT TRUCK STATION	STATE OF MINNESOTA	COUNTY	CIVIL TOWNSHIP
PRESERVE	RAILROAD	UNINCORPORATED COMMUNITY	DAM	HIGHWAY PATROL DISTRICT OFFICE	STATE OF MINNESOTA	COUNTY	CIVIL TOWNSHIP
TRIBAL LAND	EMPIRE BUILDER STATION (AMTRAK)	STATE CAPITAL	LOCK AND DAM	STATE TRAVEL INFORMATION CENTER	STATE OF MINNESOTA	COUNTY	CIVIL TOWNSHIP
STATE OF MINNESOTA	NORTHSTAR STATION (COMMUTER)	COUNTY SEAT	CITY CENTERS	REST AREA (FULL SERVICE)	STATE OF MINNESOTA	COUNTY	CIVIL TOWNSHIP
COUNTY	LIGHT RAIL	CITY CENTER	STATE CAPITAL	REST AREA (VAULT TOILET)	STATE OF MINNESOTA	COUNTY	CIVIL TOWNSHIP
MUNICIPALITY	BLUE LINE	UNINCORPORATED COMMUNITY	COUNTY SEAT	WAYSIDE (VAULT OR PIT TOILET)	STATE OF MINNESOTA	COUNTY	CIVIL TOWNSHIP
UNINCORPORATED TOWNSHIP	GREEN LINE	PUBLIC SERVICE FEATURES	CITY CENTER	PARK AND RIDE LOT	STATE OF MINNESOTA	COUNTY	CIVIL TOWNSHIP
FEDERAL ADJUSTED URBAN AREA (2014)	INFRASTRUCTURE FEATURES	MNDOT OFFICE	STATE CAPITAL	PORT OF ENTRY	STATE OF MINNESOTA	COUNTY	CIVIL TOWNSHIP
CIVIL TOWNSHIP	LONG BRIDGE (200' OR GREATER SPAN)	HIGHWAY PATROL DISTRICT OFFICE	COUNTY SEAT	PUBLIC ACCESS POINT	STATE OF MINNESOTA	COUNTY	CIVIL TOWNSHIP
SECTION	MAJOR BRIDGE (20' TO 200' SPAN)	STATE TRAVEL INFORMATION CENTER	CITY CENTER	MN STATE COLLEGE AND UNIVERSITY SYSTEM (MNSCU)	STATE OF MINNESOTA	COUNTY	CIVIL TOWNSHIP
VOYAGEURS NATIONAL PARK	MINOR BRIDGE (5' TO 20' SPAN)	REST AREA (FULL SERVICE)	UNINCORPORATED COMMUNITY	UNIVERSITY OF MN SYSTEM	STATE OF MINNESOTA	COUNTY	CIVIL TOWNSHIP
BOUNDARY WATERS CANOE AREA WILDERNESS	DAM	REST AREA (VAULT TOILET)	STATE CAPITAL	FAIRGROUNDS	STATE OF MINNESOTA	COUNTY	CIVIL TOWNSHIP
STATE PARK	LOCK AND DAM	WAYSIDE (VAULT OR PIT TOILET)	COUNTY SEAT	CULTURAL FEATURES	STATE OF MINNESOTA	COUNTY	CIVIL TOWNSHIP
REGIONAL PARK	CITY CENTERS	PARK AND RIDE LOT	CITY CENTER	STATE HISTORICAL MARKER	STATE OF MINNESOTA	COUNTY	CIVIL TOWNSHIP
NATIONAL FOREST	UNINCORPORATED COMMUNITY	PORT OF ENTRY	STATE CAPITAL	HISTORIC DISTRICT	STATE OF MINNESOTA	COUNTY	CIVIL TOWNSHIP
NATIONAL AND STATE FOREST	PUBLIC SERVICE FEATURES	PUBLIC ACCESS POINT	CITY CENTER	HISTORIC SITE	STATE OF MINNESOTA	COUNTY	CIVIL TOWNSHIP
STATE FOREST	MNDOT OFFICE	MN STATE COLLEGE AND UNIVERSITY SYSTEM (MNSCU)	STATE CAPITAL	MONUMENT	STATE OF MINNESOTA	COUNTY	CIVIL TOWNSHIP
NATIONAL TRAIL	HIGHWAY PATROL DISTRICT OFFICE	UNIVERSITY OF MN SYSTEM	COUNTY SEAT	REGIONAL WATERSHED	STATE OF MINNESOTA	COUNTY	CIVIL TOWNSHIP
WILDLIFE REFUGUE AREA	STATE TRAVEL INFORMATION CENTER	FAIRGROUNDS	CITY CENTER		STATE OF MINNESOTA	COUNTY	CIVIL TOWNSHIP
WILDLIFE MANAGEMENT AREA	REST AREA (FULL SERVICE)	CULTURAL FEATURES	UNINCORPORATED COMMUNITY		STATE OF MINNESOTA	COUNTY	CIVIL TOWNSHIP
HYDROLOGIC FEATURES	REST AREA (VAULT TOILET)	STATE HISTORICAL MARKER	STATE CAPITAL		STATE OF MINNESOTA	COUNTY	CIVIL TOWNSHIP
RIVER OR STREAM (PERMANENT)	WAYSIDE (VAULT OR PIT TOILET)	HISTORIC DISTRICT	CITY CENTER		STATE OF MINNESOTA	COUNTY	CIVIL TOWNSHIP
LAKE, POND OR RESERVOIR	PARK AND RIDE LOT	HISTORIC SITE	STATE CAPITAL		STATE OF MINNESOTA	COUNTY	CIVIL TOWNSHIP
STREAM (INTERMITTENT)	PORT OF ENTRY	MONUMENT	CITY CENTER		STATE OF MINNESOTA	COUNTY	CIVIL TOWNSHIP
DRAINAGE DITCH	PUBLIC ACCESS POINT		STATE CAPITAL		STATE OF MINNESOTA	COUNTY	CIVIL TOWNSHIP
WETLAND	MN STATE COLLEGE AND UNIVERSITY SYSTEM (MNSCU)		CITY CENTER		STATE OF MINNESOTA	COUNTY	CIVIL TOWNSHIP
ISLAND OR LAND	UNIVERSITY OF MN SYSTEM		STATE CAPITAL		STATE OF MINNESOTA	COUNTY	CIVIL TOWNSHIP
REGIONAL WATERSHED	FAIRGROUNDS		CITY CENTER		STATE OF MINNESOTA	COUNTY	CIVIL TOWNSHIP



Population (U.S. Census 2010): 192



To request information from this document in an alternative format, call 651-366-4718 or 1-800-657-3774 (Greater Minnesota); 711 or 1-800-627-3529 (Minnesota Relay). You may also send an e-mail to ADAREquest.dot@state.mn.us. (Please request at least one week in advance.)