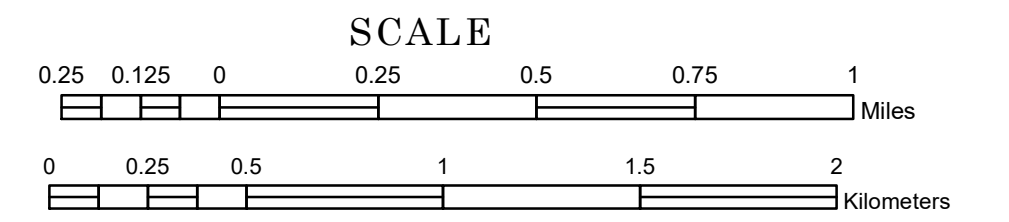


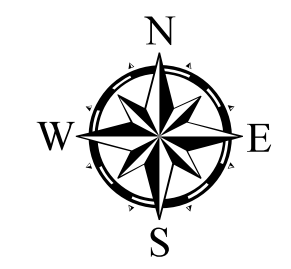
TOWNSHIP OF NEW FOLDEN

PREPARED BY THE
MINNESOTA DEPARTMENT OF TRANSPORTATION
OFFICE OF TRANSPORTATION SYSTEM MANAGEMENT

IN COOPERATION WITH
U.S. DEPARTMENT OF TRANSPORTATION
FEDERAL HIGHWAY ADMINISTRATION

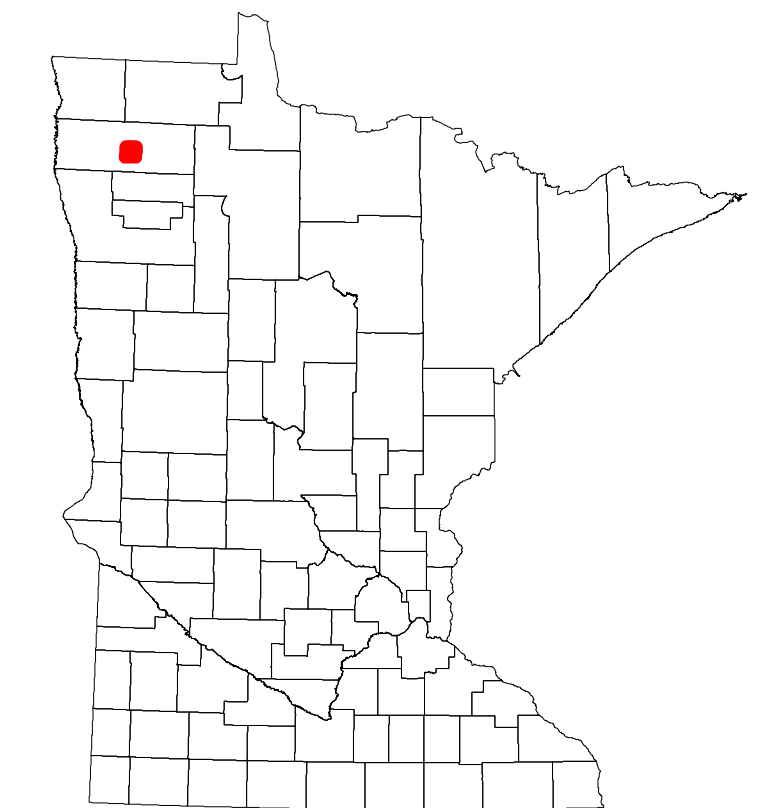


Projection:
Transverse Mercator
NAD 1986
UTM Zone 15

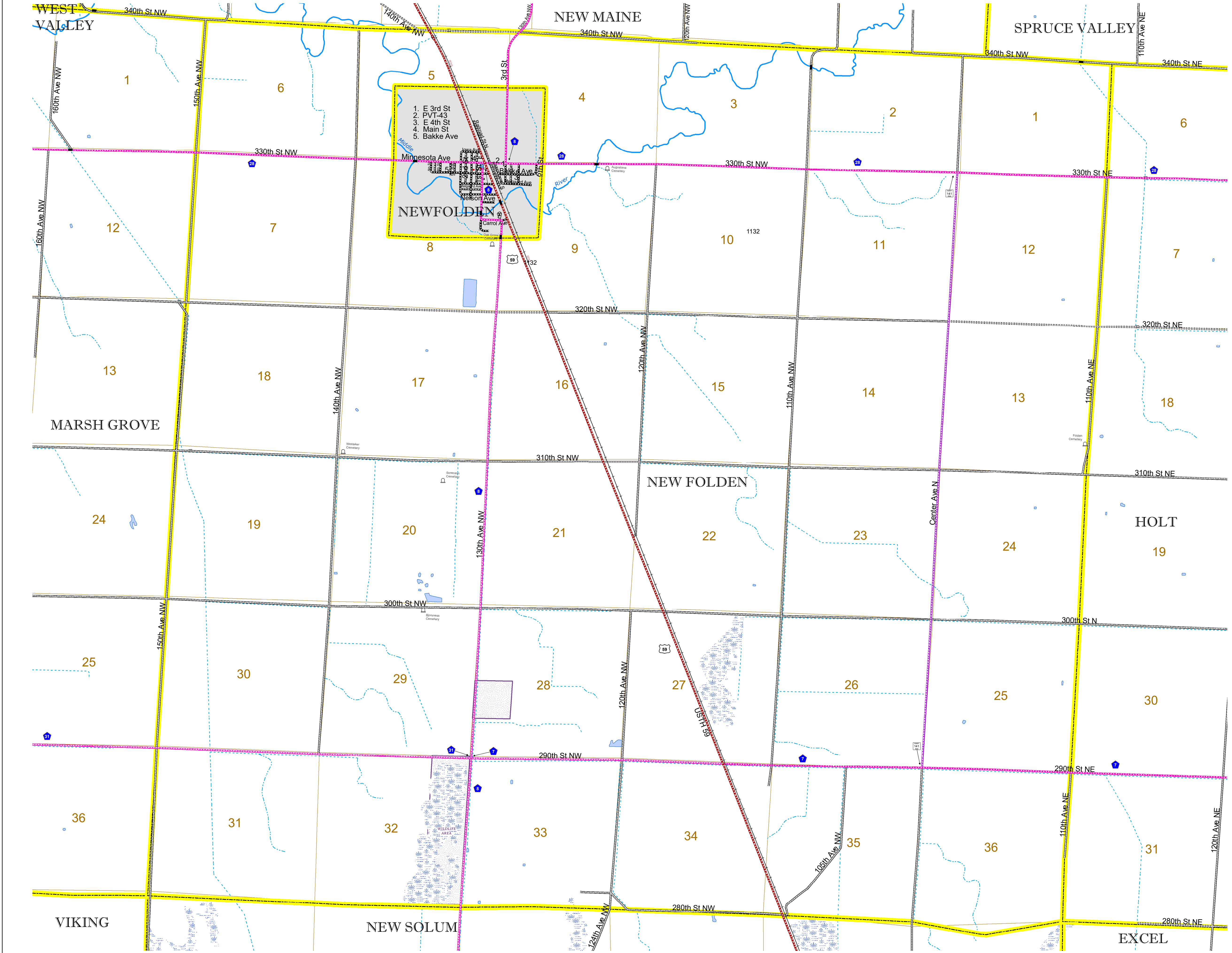


North American Datum
of 1986

ROAD AND ROADWAY FEATURES			
INTERSTATE	CONCRETE		
US HIGHWAY	BITUMINOUS		
MN HIGHWAY	GRAVEL		
COUNTY STATE AID HIGHWAY	DIRT/UNIMPROVED		
COUNTY ROAD	OTHER		
TOWNSHIP ROAD	UNKNOWN		
UNORGANIZED TERRITORY ROAD			
OTHER ROADS	RAMP OR CONNECTOR		
Municipal	INTERSTATE EXIT		
Private	AVIATION FEATURES		
National Monument	COMMERCIAL AIRPORT		
State Forest	GENERAL AIRPORT		
Nature Service	AIRSTRIP		
National Park	SEAPLANE		
National Wildlife	AIRPORT RUNWAY		
State Game			
Military	State Park	Preserve	
RAILROAD AND RAILWAY FEATURES			
EMPIRE BUILDER STATION (AMTRAK)	COMMERCIAL AIRPORT		
NORTHSTAR STATION (COMMUTER)	GENERAL AIRPORT		
LIGHT RAIL	AIRSTRIP		
BLUE LINE	SEAPLANE		
GREEN LINE	AIRPORT RUNWAY		
INFRASTRUCTURE FEATURES			
LONG BRIDGE (200' or Greater Span)	TRIAL LAND		
MAJOR BRIDGE (20' to 200' Span)	STATE OF MINNESOTA		
MINOR BRIDGE (5' to 20' Span)	COUNTY		
DAM	MUNICIPALITY		
LOCK AND DAM	UNORGANIZED TERRITORY		
	FEDERAL ADJUSTED URBAN AREA (2014)		
	CIVIL TOWNSHIP		
	CONGRESSIONAL TOWNSHIP		
	SECTION		
	MILITARY		
	VOYAGEURS NATIONAL PARK		
	BOUNDARY WATERS CANOE AREA WILDERNESS		
	STATE PARK		
	REGIONAL PARK		
	NATIONAL FOREST		
	NATIONAL AND STATE FOREST		
	STATE FOREST		
	NATIONAL TRAIL		
	WILDLIFE REFUGUE AREA		
	WILDLIFE MANAGEMENT AREA		
HYDROLOGIC FEATURES			
RIVER OR STREAM (PERMANENT)	LAKE, POND OR RESERVOIR		
STREAM (INTERMITTENT)	DRAINAGE DITCH		
	WETLAND		
	ISLAND OR LAND		
	REGIONAL WATERSHED		
CITY CENTERS			
STATE CAPITAL	CITY CENTER		
COUNTY SEAT	UNINCORPORATED COMMUNITY		
PUBLIC SERVICE FEATURES			
MNDOT OFFICE			
MNDOT TRUCK STATION			
HIGHWAY PATROL DISTRICT OFFICE			
STATE TRAVEL INFORMATION CENTER			
REST AREA (Full Service)			
REST AREA (Vault Toilet)			
WAYSIDE (Vault or Pit Toilet)			
PARK AND RIDE LOT			
PORT OF ENTRY			
PUBLIC ACCESS POINT			
MN STATE COLLEGE AND UNIVERSITY SYSTEM (MNSCU)			
UNIVERSITY OF MN SYSTEM			
FAIRGROUNDS			
CULTURAL FEATURES			
STATE HISTORICAL MARKER			
HISTORIC DISTRICT			
HISTORIC SITE			
MONUMENT			



Population (U.S. Census 2010): 230



To request information from this document in an alternative format, call 651-366-4718 or 1-800-657-3774 (Greater Minnesota); 711 or 1-800-627-3529 (Minnesota Relay). You may also send an e-mail to ADarequest.dot@state.mn.us. (Please request at least one week in advance.)