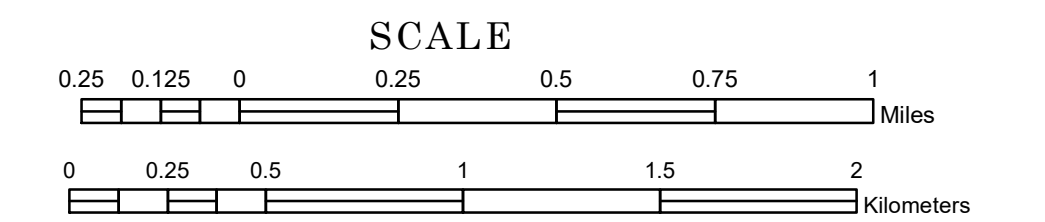


TOWNSHIP OF COON CREEK

PREPARED BY THE
MINNESOTA DEPARTMENT OF TRANSPORTATION
OFFICE OF TRANSPORTATION SYSTEM MANAGEMENT

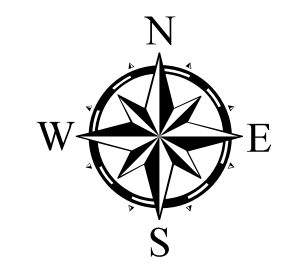
IN COOPERATION WITH
U.S. DEPARTMENT OF TRANSPORTATION
FEDERAL HIGHWAY ADMINISTRATION



1 in = 1,600 ft

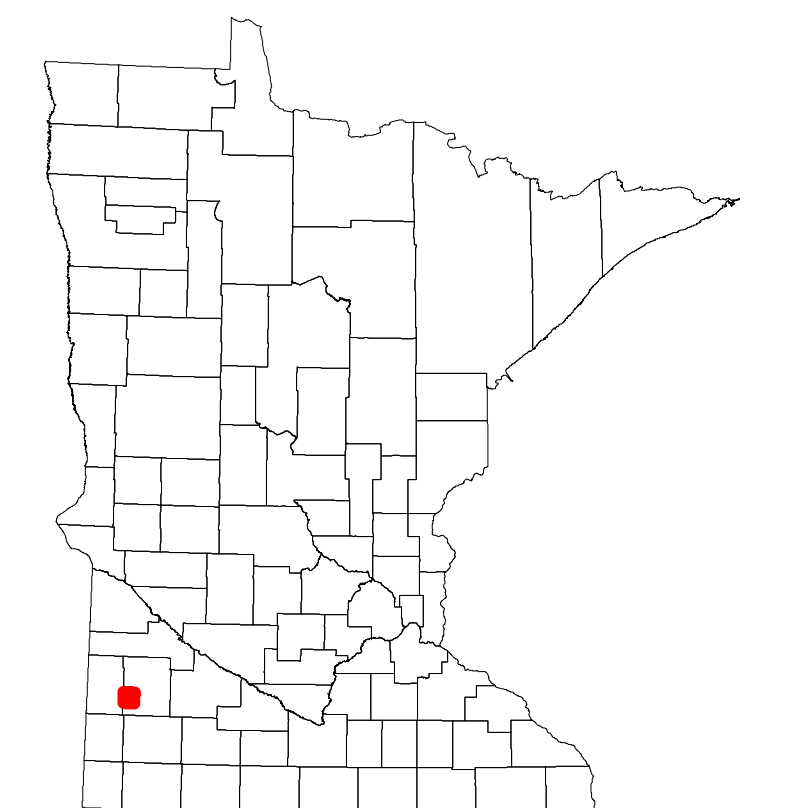
2023

Projection:
Transverse Mercator
NAD 1986
UTM Zone 15

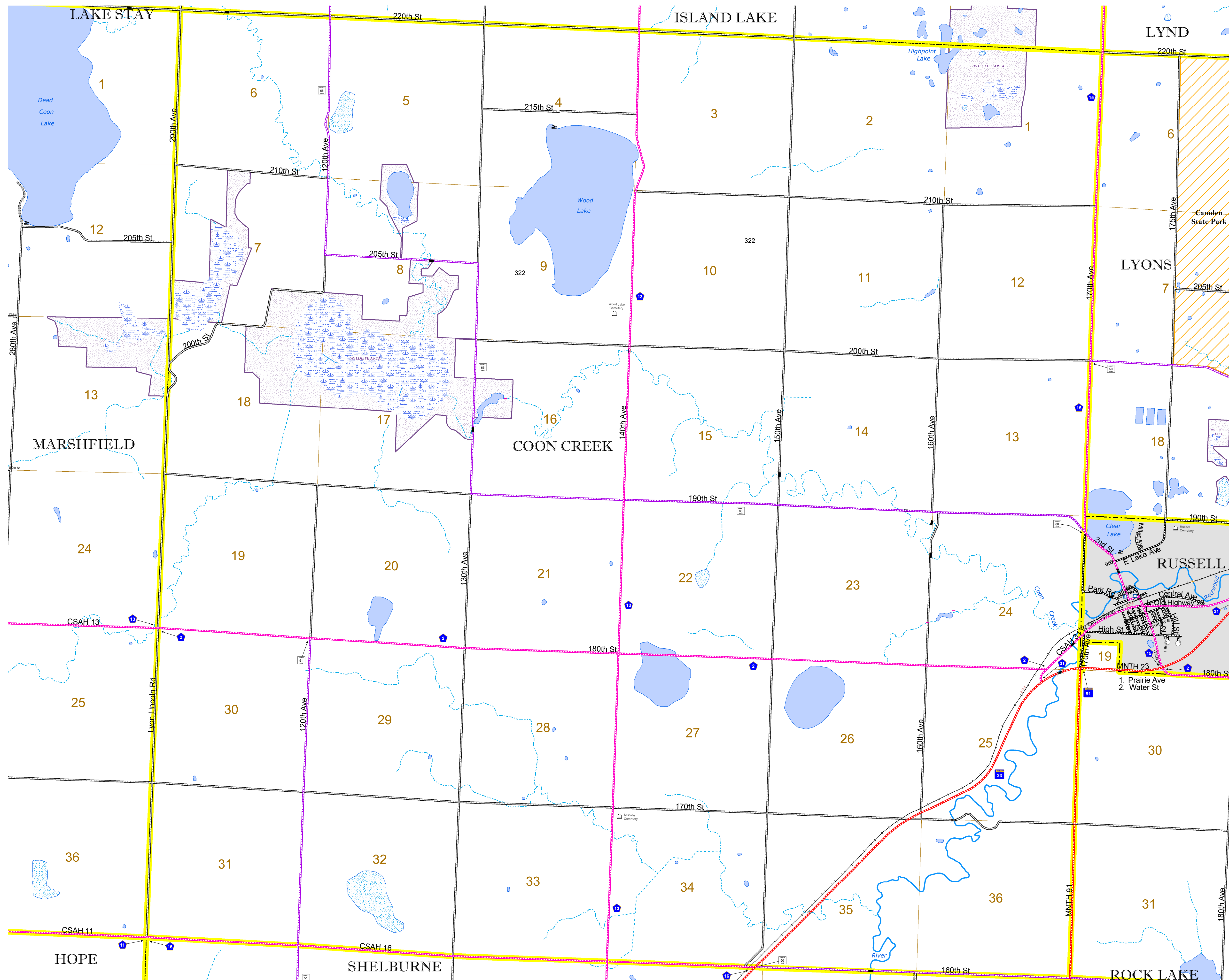


North American Datum
of 1986

| ROAD AND ROADWAY FEATURES | | AVIATION FEATURES | |
|--|---------------------------------------|---------------------------|---------------------------------------|
| INTERSTATE | CONCRETE | COMMERCIAL AIRPORT | GENERAL AIRPORT |
| US HIGHWAY | BITUMINOUS | AIRSTRIP | SEAPLANE |
| MN HIGHWAY | GRAVEL | AIRPORT RUNWAY | |
| COUNTY STATE AID HIGHWAY | DIRT/UNIMPROVED | | |
| COUNTY ROAD | OTHER | | |
| TOWNSHIP ROAD | UNKNOWN | | |
| UNORGANIZED TERRITORY ROAD | | | |
| OTHER ROADS | | BOUNDARY FEATURES | |
| Municipal | RAMP OR CONNECTOR | TRIBAL LAND | STATE OF MINNESOTA |
| Private | INTERSTATE EXIT | COUNTY | MUNICIPALITY |
| Nature Service | GREAT RIVER ROAD | UNORGANIZED TERRITORY | FEDERAL ADJUSTED URBAN AREA (2014) |
| Mulden | | CIVIL TOWNSHIP | CONGRESSIONAL TOWNSHIP |
| RAILROAD AND RAILWAY FEATURES | | SECTION | |
| EMPIRE BUILDER STATION (AMTRAK) | COMMERCIAL AIRPORT | MILITARY | VOYAGEURS NATIONAL PARK |
| NORTHSTAR STATION (COMMUTER) | GENERAL AIRPORT | | BOUNDARY WATERS CANOE AREA WILDERNESS |
| LIGHT RAIL | AIRSTRIP | | STATE PARK |
| BLUE LINE | SEAPLANE | | REGIONAL PARK |
| GREEN LINE | AIRPORT RUNWAY | | NATIONAL FOREST |
| INFRASTRUCTURE FEATURES | | NATIONAL AND STATE FOREST | |
| LONG BRIDGE (200' OR GREATER SPAN) | TRIAL LAND | | STATE FOREST |
| MAJOR BRIDGE (20' TO 200' SPAN) | STATE OF MINNESOTA | | WILDLIFE REFUGUE AREA |
| MINOR BRIDGE (5' TO 20' SPAN) | COUNTY | | WILDLIFE MANAGEMENT AREA |
| DAM | MUNICIPALITY | | HYDROLOGIC FEATURES |
| LOCK AND DAM | UNORGANIZED TERRITORY | | RIVER OR STREAM (PERMANENT) |
| CITY CENTERS | | LAKE, POND OR RESERVOIR | |
| STATE CAPITAL | FEDERAL ADJUSTED URBAN AREA (2014) | | STREAM (INTERMITTENT) |
| COUNTY SEAT | CIVIL TOWNSHIP | | DRAINAGE DITCH |
| CITY CENTER | CONGRESSIONAL TOWNSHIP | | WETLAND |
| UNINCORPORATED COMMUNITY | SECTION | | ISLAND OR LAND |
| PUBLIC SERVICE FEATURES | | REGIONAL WATERSHED | |
| MNDOT OFFICE | MILITARY | | |
| MNDOT TRUCK STATION | VOYAGEURS NATIONAL PARK | | |
| HIGHWAY PATROL DISTRICT OFFICE | BOUNDARY WATERS CANOE AREA WILDERNESS | | |
| STATE TRAVEL INFORMATION CENTER | STATE PARK | | |
| REST AREA (FULL SERVICE) | REGIONAL PARK | | |
| REST AREA (VAULT TOILET) | NATIONAL FOREST | | |
| WAYSIDE (VAULT OR PITY TOILET) | NATIONAL AND STATE FOREST | | |
| PARK AND RIDE LOT | STATE FOREST | | |
| PORT OF ENTRY | WILDLIFE REFUGUE AREA | | |
| PUBLIC ACCESS POINT | WILDLIFE MANAGEMENT AREA | | |
| MN STATE COLLEGE AND UNIVERSITY SYSTEM (MNSCU) | HYDROLOGIC FEATURES | | |
| UNIVERSITY OF MN SYSTEM | RIVER OR STREAM (PERMANENT) | | |
| FAIRGROUNDS | LAKE, POND OR RESERVOIR | | |
| CULTURAL FEATURES | | | |
| STATE HISTORICAL MARKER | STREAM (INTERMITTENT) | | |
| HISTORIC DISTRICT | DRAINAGE DITCH | | |
| HISTORIC SITE | WETLAND | | |
| MONUMENT | ISLAND OR LAND | | |
| | REGIONAL WATERSHED | | |



Population (U.S. Census 2010): 244



To request information from this document in an alternative format, call 651-366-4718 or 1-800-657-3774 (Greater Minnesota); 711 or 1-800-627-3529 (Minnesota Relay). You may also send an e-mail to ADArequest.dot@state.mn.us. (Please request at least one week in advance.)