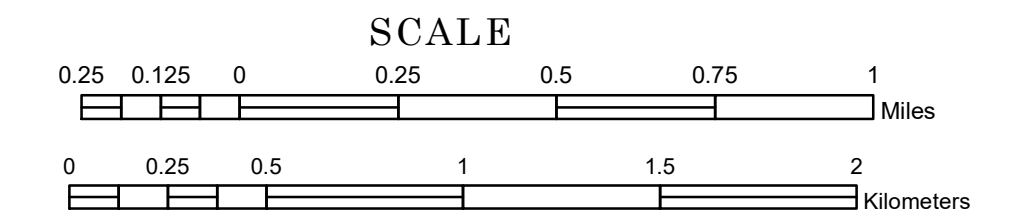


TOWNSHIP OF WATERVILLE

PREPARED BY THE
MINNESOTA DEPARTMENT OF TRANSPORTATION
OFFICE OF TRANSPORTATION SYSTEM MANAGEMENT

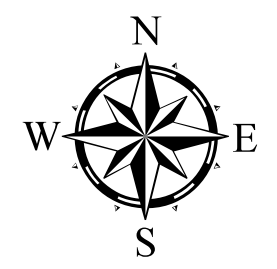
IN COOPERATION WITH
U.S. DEPARTMENT OF TRANSPORTATION
FEDERAL HIGHWAY ADMINISTRATION



1 in = 1,600 ft

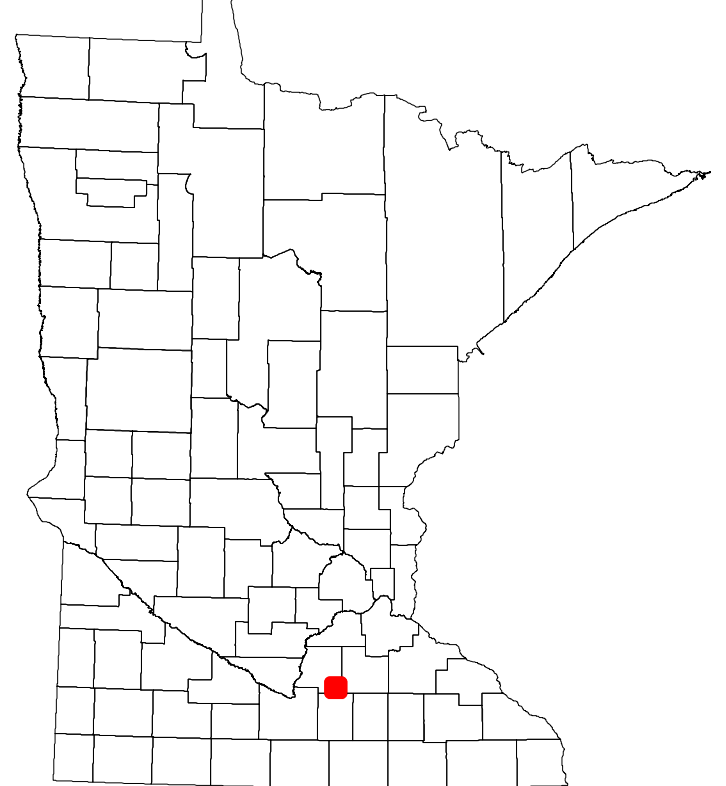
2024

Projection:
Transverse Mercator
NAD 1986
UTM Zone 15

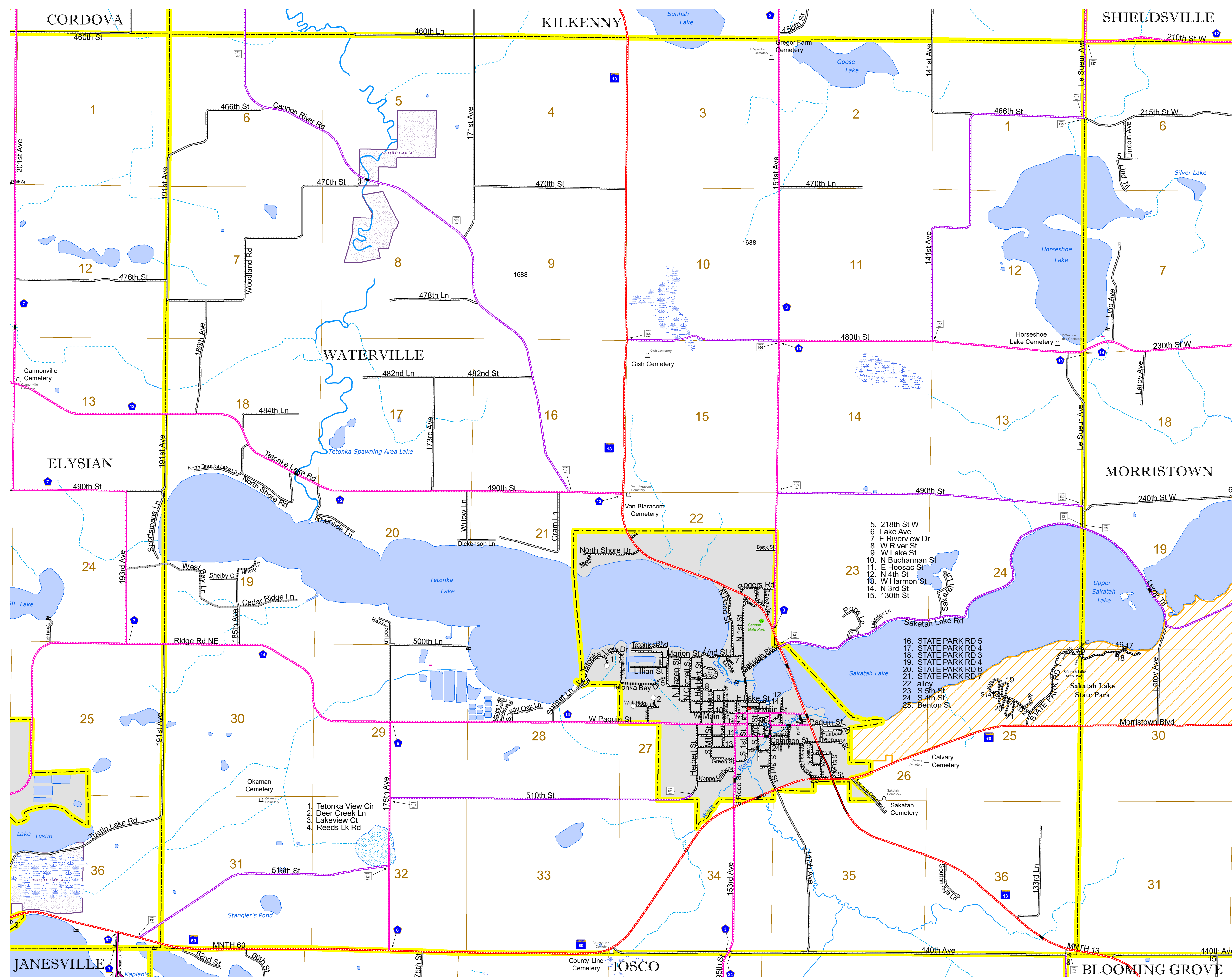


North American Datum
of 1986

ROAD AND ROADWAY FEATURES		AVIATION FEATURES	
INTERSTATE	CONCRETE	COMMERCIAL AIRPORT	GENERAL AIRPORT
US HIGHWAY	BITUMINOUS	AIRSTRIP	SEAPLANE
MN HIGHWAY	GRAVEL	AIRPORT RUNWAY	
COUNTY STATE AID HIGHWAY	DIRT/UNIMPROVED		
COUNTY ROAD	OTHER		
TOWNSHIP ROAD	UNKNOWN		
UNORGANIZED TERRITORY ROAD			
OTHER ROADS		BOUNDARY FEATURES	
MUNICIPAL	RAMP OR CONNECTOR	TRIBAL LAND	STATE OF MINNESOTA
PRIVATE	INTERSTATE EXIT	COUNTY	MUNICIPALITY
NATIONAL MONUMENT	INTERSTATE EXIT	UNORGANIZED TERRITORY	FEDERAL ADJUSTED URBAN AREA (2014)
NATIONAL PARK	INTERSTATE EXIT	CIVIL TOWNSHIP	CONGRESSIONAL TOWNSHIP
NATIONAL WILDLIFE	INTERSTATE EXIT	CITY CENTER	UNINCORPORATED COMMUNITY
STATE PARK	INTERSTATE EXIT	CITY CENTER	SECTION
PRESERVE	INTERSTATE EXIT	CITY CENTER	MILITARY
RAILROAD AND RAILWAY FEATURES		VOYAGEURS NATIONAL PARK	
RAILROAD	COMMERCIAL AIRPORT	BOUNDARY WATERS CANOE AREA WILDERNESS	
EMPIRE BUILDER STATION (AMTRAK)	GENERAL AIRPORT	STATE PARK	
NORTHSTAR STATION (COMMUTER)	AIRSTRIP	REGIONAL PARK	
LIGHT RAIL	SEAPLANE	NATIONAL FOREST	
BLUE LINE	AIRPORT RUNWAY	NATIONAL AND STATE FOREST	
GREEN LINE		STATE FOREST	
INFRASTRUCTURE FEATURES		NATIONAL TRAIL	
LONG BRIDGE (200' OR GREATER SPAN)		WILDLIFE REFUGE AREA	
MAJOR BRIDGE (20' TO 200' SPAN)		WILDLIFE MANAGEMENT AREA	
MINOR BRIDGE (5' TO 20' SPAN)		HYDROLOGIC FEATURES	
DAM		RIVER OR STREAM (PERENNIAL)	
LOCK AND DAM		LAKE, POND OR RESERVOIR	
CITY CENTERS		STREAM (INTERMITTENT)	
STATE CAPITAL	CITY CENTER	DRAINAGE DITCH	
COUNTY SEAT	CITY CENTER	HISTORIC DISTRICT	
CITY CENTER	UNINCORPORATED COMMUNITY	HISTORIC SITE	
PUBLIC SERVICE FEATURES		MONUMENT	
MN DOT OFFICE		REGIONAL WATERSHED	
MN DOT TRUCK STATION			
HIGHWAY PATROL DISTRICT OFFICE			
STATE TRAVEL INFORMATION CENTER			
REST AREA (FULL SERVICE)			
REST AREA (VALET TOILET)			
WAYSIDE (VALET OR PIT TOILET)			
PARK AND RIDE LOT			
PORT OF ENTRY			
PUBLIC ACCESS POINT			
MN STATE COLLEGE AND UNIVERSITY SYSTEM (MNSCU)			
UNIVERSITY OF MN SYSTEM			
FARMGROUNDS			
CULTURAL FEATURES			
STATE HISTORICAL MARKER			
HISTORIC DISTRICT			
HISTORIC SITE			
MONUMENT			



Population (U.S. Census 2010): 716



To request information from this document in an alternative format, call 651-366-4718 or 1-800-657-3774 (Greater Minnesota); 711 or 1-800-627-3529 (Minnesota Relay). You may also send an e-mail to ADAREquest.dot@state.mn.us. (Please request at least one week in advance.)