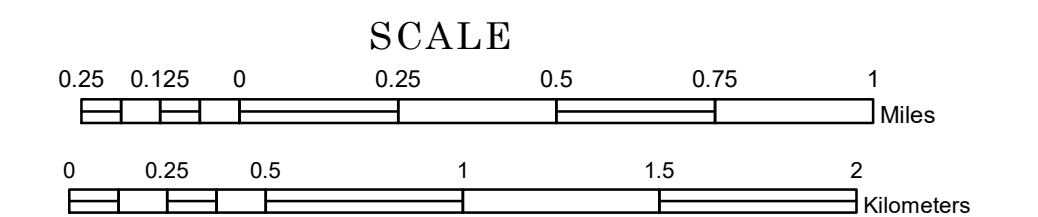


TOWNSHIP OF
TEN MILE LAKE

PREPARED BY THE
MINNESOTA DEPARTMENT OF TRANSPORTATION
OFFICE OF TRANSPORTATION SYSTEM MANAGEMENT

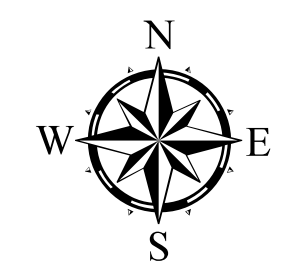
IN COOPERATION WITH
U.S. DEPARTMENT OF TRANSPORTATION
FEDERAL HIGHWAY ADMINISTRATION



1 in = 1,600 ft

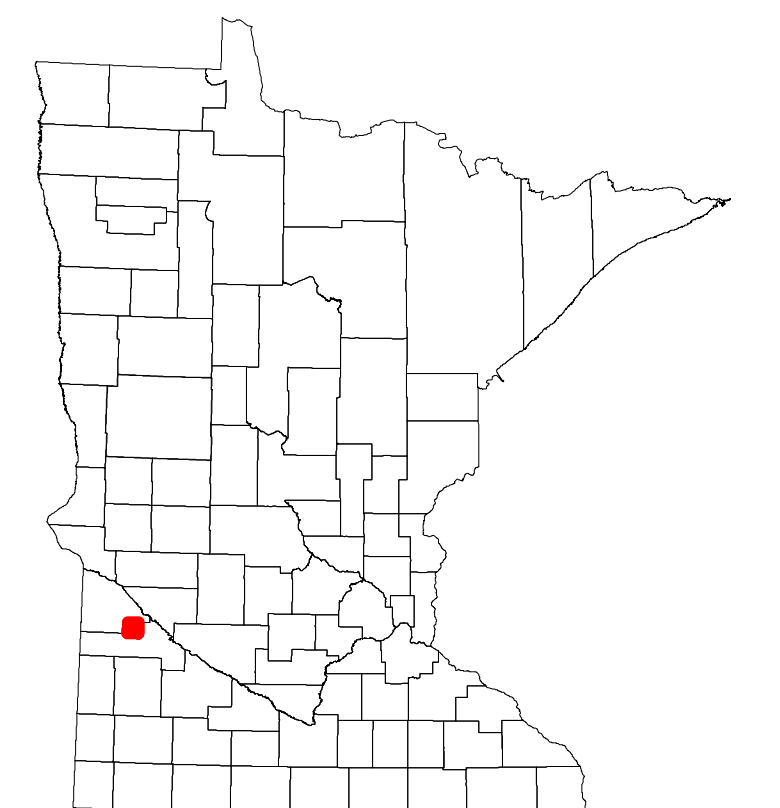
2024

Projection:
Transverse Mercator
NAD 1986
UTM Zone 15

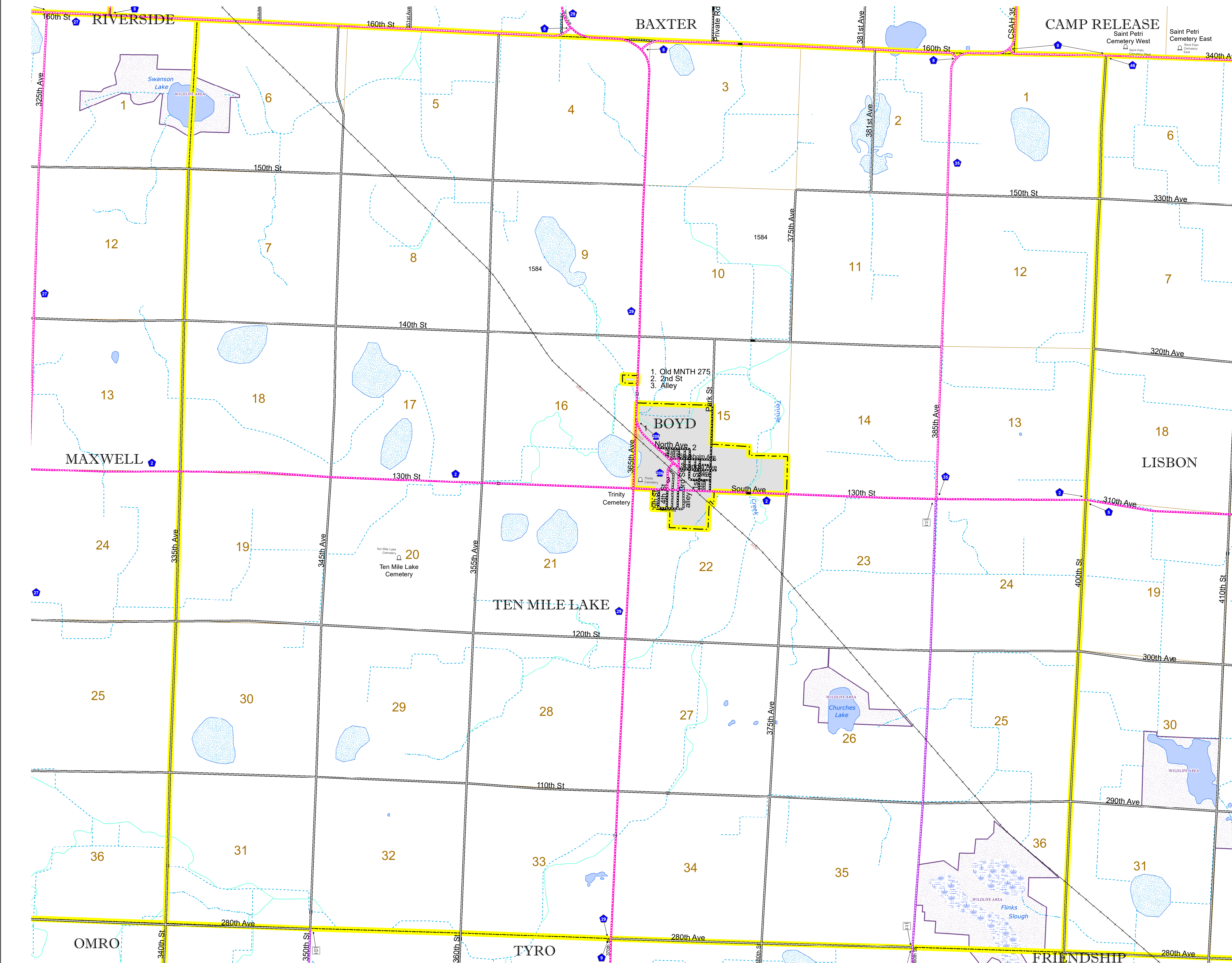


North American Datum
of 1986

ROAD AND ROADWAY FEATURES		RAILROAD AND RAILWAY FEATURES		AVIATION FEATURES	
INTERSTATE		EMPIRE BUILDER STATION (AMTRAK)		COMMERCIAL AIRPORT	
US HIGHWAY		NORTHSTAR STATION (COMMUTER)		GENERAL AIRPORT	
MN HIGHWAY		LIGHT RAIL		AIRSTRIP	
COUNTY STATE AID HIGHWAY		BLUE LINE		SEAPLANE	
COUNTY ROAD		GREEN LINE		AIRPORT RUNWAY	
TOWNSHIP ROAD		LONG BRIDGE (300' OR GREATER SPAN)		BOUNDARY FEATURES	
UNORGANIZED TERRITORY ROAD		MAJOR BRIDGE (20' TO 300' SPAN)			
OTHER ROADS		MINOR BRIDGE (5' TO 20' SPAN)		TRIBAL LAND	
MUNICIPAL		DAM		STATE OF MINNESOTA	
PRIVATE		LOCK AND DAM		COUNTY	
NATIONAL MONUMENT		CITY CENTERS		MUNICIPALITY	
NATIONAL PARK		STATE CAPITAL		UNORGANIZED TERRITORY	
NATIONAL WILDLIFE REFUGE		COUNTY SEAT		FEDERAL ADJUSTED URBAN AREA (2014)	
STATE PARK		CITY CENTER		CIVIL TOWNSHIP	
STATE FOREST		UNINCORPORATED COMMUNITY		CONGRESSIONAL TOWNSHIP	
NATIONAL FOREST		PUBLIC SERVICE FEATURES		SECTION	
STATE FOREST		MNDOT OFFICE		MILITARY	
NATIONAL TRAIL		MNDOT TRUCK STATION		VOYAGEURS NATIONAL PARK	
WILDLIFE REFUGES		HIGHWAY PATROL DISTRICT OFFICE		BOUNDARY WATERS CANOE AREA WILDERNESS	
WILDLIFE MANAGEMENT AREA		STATE TRAVEL INFORMATION CENTER		STATE PARK	
HYDROLOGIC FEATURES		REST AREA (FULL SERVICE)		REGIONAL PARK	
RIVER OR STREAM (PERMANENT)		REST AREA (VAULT TOILET)		NATIONAL FOREST	
LAKE, POND OR RESERVOIR		WAYSIDE (VAULT OR PRT TOILET)		NATIONAL AND STATE FOREST	
STREAM (INTERMITTENT)		PARK AND RIDE LOT		STATE FOREST	
DRAINAGE DITCH		PORT OF ENTRY		NATIONAL TRAIL	
WETLAND		PUBLIC ACCESS POINT		WILDLIFE REFUGES	
ISLAND OR LAND		MN STATE COLLEGE AND UNIVERSITY SYSTEM (MNSCU)		WILDLIFE MANAGEMENT AREA	
REGIONAL WATERSHED		UNIVERSITY OF MN SYSTEM		HYDROLOGIC FEATURES	
		FAIRGROUNDS		RIVER OR STREAM (PERMANENT)	
		CULTURAL FEATURES		LAKE, POND OR RESERVOIR	
		STATE HISTORICAL MARKER		STREAM (INTERMITTENT)	
		HISTORIC DISTRICT		DRAINAGE DITCH	
		HISTORIC SITE		WETLAND	
		MONUMENT		ISLAND OR LAND	



Population (U.S. Census 2010): 153



To request information from this document in an alternative format, call 651-366-4718 or 1-800-657-3774 (Greater Minnesota Relay); 711 or 1-800-627-3529 (Minnesota Relay). You may also send an e-mail to ADArequest.dot@state.mn.us. (Please request at least one week in advance.)