

TOWNSHIP OF MACSVILLE

PREPARED BY THE
MINNESOTA DEPARTMENT OF TRANSPORTATION
OFFICE OF TRANSPORTATION SYSTEM MANAGEMENT

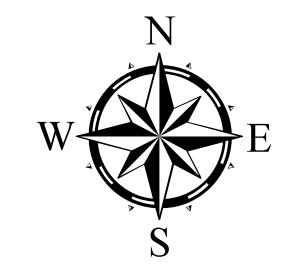
IN COOPERATION WITH
U.S. DEPARTMENT OF TRANSPORTATION
FEDERAL HIGHWAY ADMINISTRATION



1 in = 1,600 ft

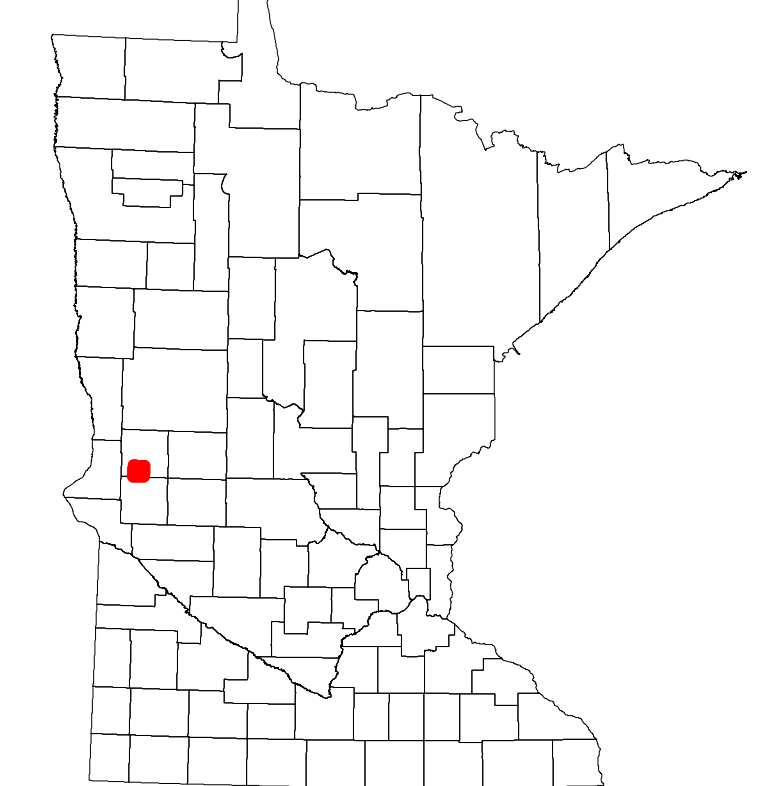
2023

Projection:
Transverse Mercator
NAD 1986
UTM Zone 15

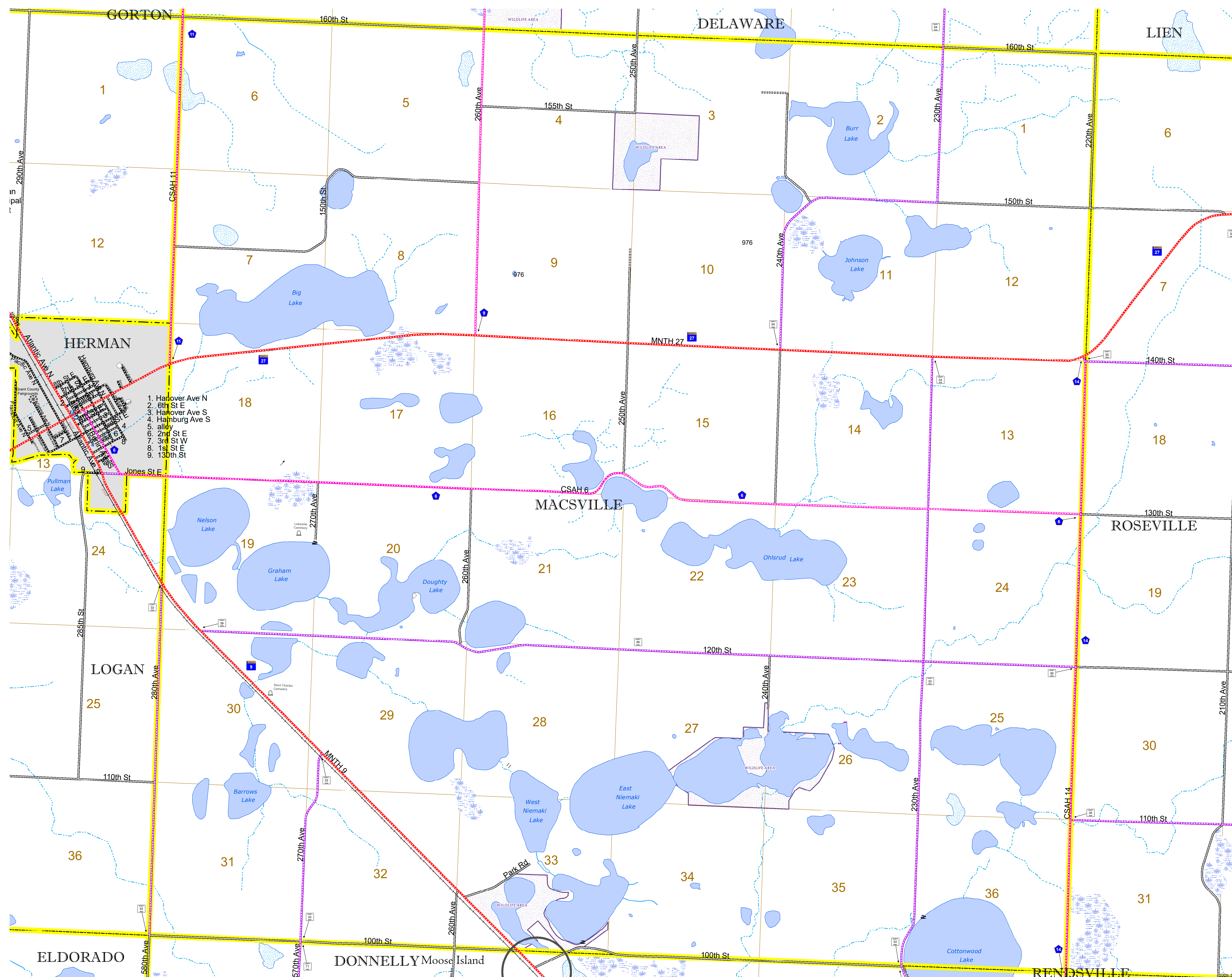


North American Datum
of 1986

ROAD AND ROADWAY FEATURES		RAILROAD AND RAILWAY FEATURES		AVIATION FEATURES	
INTERSTATE	CONCRETE	EMPIRE BUILDER STATION (AMTRAK)	COMMERCIAL AIRPORT	GENERAL AIRPORT	TRIBAL LAND
US HIGHWAY	BITUMINOUS	NORTHSTAR STATION (COMPUTER)	AIRSTRIP	AIRSTRIP	STATE OF MINNESOTA
MN HIGHWAY	GRAVEL	LIGHT RAIL	SEAPLANE	SEAPLANE	COUNTY
COUNTY STATE AID HIGHWAY	DIRT/UNIMPROVED	BLUE LINE	AIRPORT RUNWAY	AIRPORT RUNWAY	MUNICIPALITY
COUNTY ROAD	OTHER	GREEN LINE	BOUNDARY FEATURES	BOUNDARY FEATURES	UNORGANIZED TERRITORY
TOWNSHIP ROAD	UNKNOWN	LONG BRIDGE (200' OR GREATER SPAN)	TRIAL LAND	TRIAL LAND	FEDERAL ADJUSTED URBAN AREA (2014)
UNORGANIZED TERRITORY ROAD		MAJOR BRIDGE (20' TO 200' SPAN)	STATE OF MINNESOTA	STATE OF MINNESOTA	CIVIL TOWNSHIP
OTHER ROADS		MINOR BRIDGE (5' TO 20' SPAN)	COUNTY	COUNTY	CONGRESSIONAL TOWNSHIP
MUNICIPAL		LOCK AND DAM	MUNICIPALITY	MUNICIPALITY	SECTION
PRIVATE			UNORGANIZED TERRITORY	UNORGANIZED TERRITORY	MILITARY
NATIONAL MONUMENT			FEDERAL ADJUSTED URBAN AREA (2014)	FEDERAL ADJUSTED URBAN AREA (2014)	VOYAGEURS NATIONAL PARK
NATIONAL WILDLIFE REFUGES			CIVIL TOWNSHIP	CIVIL TOWNSHIP	BOUNDARY WATERS CANOE AREA WILDERNESS
STATE PARK			CONGRESSIONAL TOWNSHIP	CONGRESSIONAL TOWNSHIP	STATE PARK
STATE FOREST			SECTION	SECTION	REGIONAL PARK
STATE FOREST			MILITARY	MILITARY	NATIONAL FOREST
STATE FOREST			VOYAGEURS NATIONAL PARK	VOYAGEURS NATIONAL PARK	NATIONAL AND STATE FOREST
STATE FOREST			BOUNDARY WATERS CANOE AREA WILDERNESS	BOUNDARY WATERS CANOE AREA WILDERNESS	STATE FOREST
STATE FOREST			STATE PARK	STATE PARK	NATIONAL TRAIL
STATE FOREST			REGIONAL PARK	REGIONAL PARK	WILDLIFE REFUGES
STATE FOREST			NATIONAL FOREST	NATIONAL FOREST	WILDLIFE MANAGEMENT AREA
STATE FOREST			NATIONAL AND STATE FOREST	NATIONAL AND STATE FOREST	HYDROLOGIC FEATURES
STATE FOREST			STATE FOREST	STATE FOREST	RIVER OR STREAM (PERMANENT)
STATE FOREST			WILDLIFE REFUGES	WILDLIFE REFUGES	LAKE, POND OR RESERVOIR
STATE FOREST			WILDLIFE MANAGEMENT AREA	WILDLIFE MANAGEMENT AREA	STREAM (INTERMITTENT)
STATE FOREST			HYDROLOGIC FEATURES	HYDROLOGIC FEATURES	DRAINAGE DITCH
STATE FOREST			RIVER OR STREAM (PERMANENT)	RIVER OR STREAM (PERMANENT)	WETLAND
STATE FOREST			LAKE, POND OR RESERVOIR	LAKE, POND OR RESERVOIR	ISLAND OR LAND
STATE FOREST			STREAM (INTERMITTENT)	STREAM (INTERMITTENT)	REGIONAL WATERSHED
STATE FOREST			DRAINAGE DITCH	DRAINAGE DITCH	
STATE FOREST			WETLAND	WETLAND	
STATE FOREST			ISLAND OR LAND	ISLAND OR LAND	
STATE FOREST			REGIONAL WATERSHED	REGIONAL WATERSHED	



Population (U.S. Census 2010): 114



1. Harlover Ave N
2. 6th St E
3. Harlover Ave S
4. Harburg Ave S
5. alley
6. 2nd St E
7. 3rd St W
8. 1st St E
9. 130th St

To request information from this document in an alternative format, call 651-366-4718 or 1-800-657-3774 (Greater Minnesota); 711 or 1-800-627-3529 (Minnesota Relay). You may also send an e-mail to ADRequest.dot@state.mn.us. (Please request at least one week in advance.)