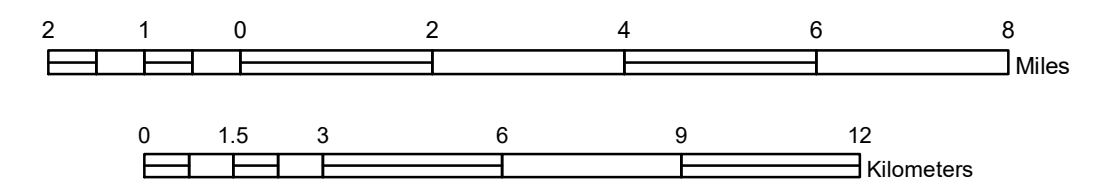


FUNCTIONAL CLASSIFICATION MAP LAKE OF THE WOODS COUNTY MINNESOTA

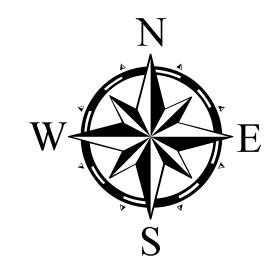
PREPARED BY THE
MINNESOTA DEPARTMENT OF TRANSPORTATION
OFFICE OF TRANSPORTATION SYSTEM MANAGEMENT
IN COOPERATION WITH
U.S. DEPARTMENT OF TRANSPORTATION
FEDERAL HIGHWAY ADMINISTRATION

SCALE



1 in = 10,560 ft
DECEMBER 2023

Projection:
Transverse Mercator
NAD 1986
UTM Zone 15



North American Datum
of 1986

ROAD AND ROADWAY FEATURES

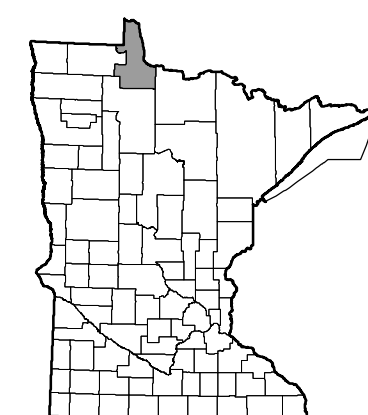
- INTERSTATE.....
- OTHER FREEWAY OR EXPRESSWAY.....
- PRINCIPAL ARTERIAL - OTHER.....
- MINOR ARTERIAL.....
- MAJOR COLLECTOR.....
- MINOR COLLECTOR.....
- LOCAL.....
- RAILWAY.....
- INTERSTATE.....
- US HIGHWAY.....
- MN HIGHWAY.....
- COUNTY STATE AID HIGHWAY.....
- COUNTY ROAD.....

Arrows near road shields indicate the start and end points of routes.

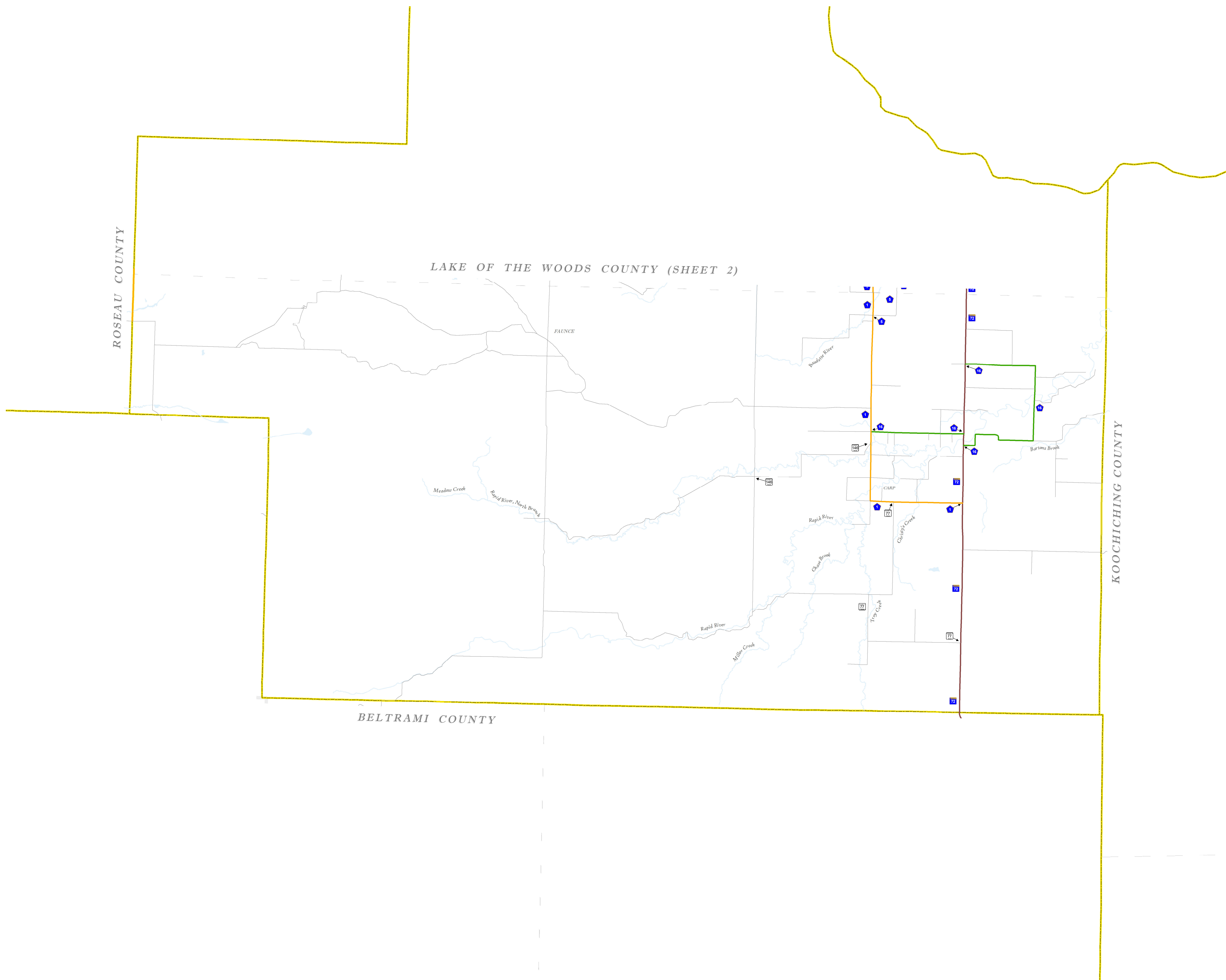
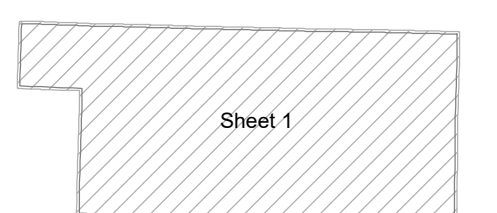
BOUNDARY FEATURES

- STATE OF MINNESOTA.....
- COUNTY.....
- CIVIL TOWNSHIP.....

Outline Map of Minnesota showing
location of the County within the state.



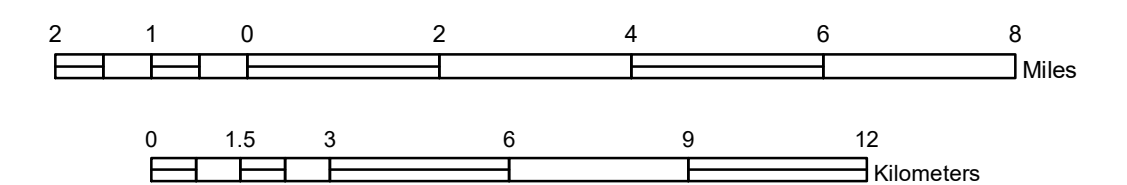
Outline Map of the County.
Area of this County 1,779.28 Sq. Miles
Land Area 1,297.87 Sq. Miles
2020 Total County Population 3,763



FUNCTIONAL CLASSIFICATION MAP LAKE OF THE WOODS COUNTY MINNESOTA

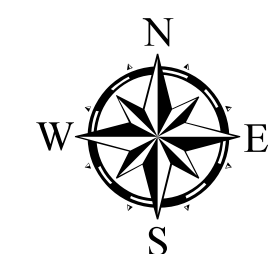
PREPARED BY THE
MINNESOTA DEPARTMENT OF TRANSPORTATION
OFFICE OF TRANSPORTATION SYSTEM MANAGEMENT
IN COOPERATION WITH
U.S. DEPARTMENT OF TRANSPORTATION
FEDERAL HIGHWAY ADMINISTRATION

SCALE



1 in = 10,560 ft
DECEMBER 2023

Projection:
Transverse Mercator
NAD 1986
UTM Zone 15



North American Datum
of 1986

ROAD AND ROADWAY FEATURES

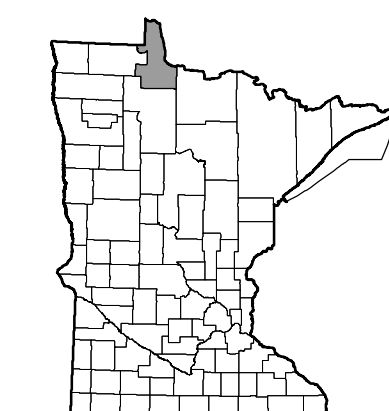
- INTERSTATE.....
- OTHER FREEWAY OR EXPRESSWAY.....
- PRINCIPAL ARTERIAL - OTHER.....
- MINOR ARTERIAL.....
- MAJOR COLLECTOR.....
- MINOR COLLECTOR.....
- LOCAL.....
- RAILWAY.....
- INTERSTATE.....
- US HIGHWAY.....
- MN HIGHWAY.....
- COUNTY STATE AID HIGHWAY.....
- COUNTY ROAD.....

Arrows near road shields indicate the start and end points of routes.

BOUNDARY FEATURES

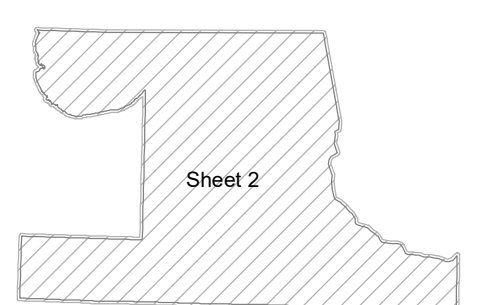
- STATE OF MINNESOTA.....
- COUNTY.....
- CIVIL TOWNSHIP.....

Outline Map of Minnesota showing
location of the County within the state.



Outline Map of the County.

Area of this County 1,779.28 Sq. Miles
Land Area 1,297.87 Sq. Miles
2020 Total County Population 3,763



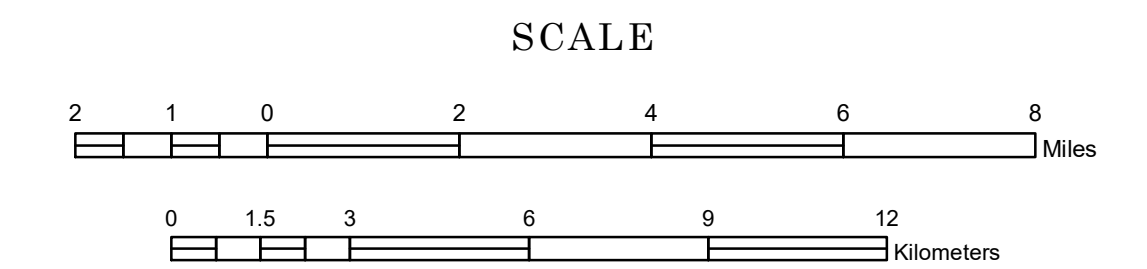
LAKE OF THE WOODS COUNTY (SHEET 3)

LAKE OF THE WOODS COUNTY (SHEET 1)

FUNCTIONAL CLASSIFICATION MAP LAKE OF THE WOODS COUNTY MINNESOTA

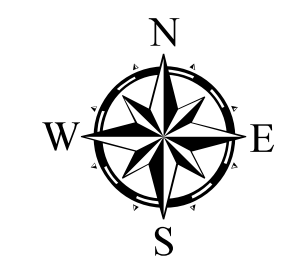
PREPARED BY THE
MINNESOTA DEPARTMENT OF TRANSPORTATION
OFFICE OF TRANSPORTATION SYSTEM MANAGEMENT

IN COOPERATION WITH
U.S. DEPARTMENT OF TRANSPORTATION
FEDERAL HIGHWAY ADMINISTRATION



1 in = 10,560 ft
DECEMBER 2023

Projection:
Transverse Mercator
NAD 1986
UTM Zone 15



North American Datum
of 1986

ROAD AND ROADWAY FEATURES

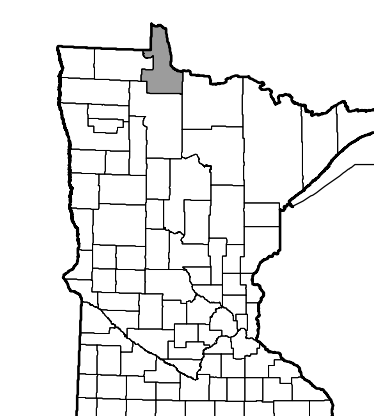
INTERSTATE.....	
OTHER FREEWAY OR EXPRESSWAY.....	
PRINCIPAL ARTERIAL - OTHER.....	
MINOR ARTERIAL.....	
MAJOR COLLECTOR.....	
MINOR COLLECTOR.....	
LOCAL.....	
RAILWAY.....	
INTERSTATE.....	
US HIGHWAY.....	
MN HIGHWAY.....	
COUNTY STATE AID HIGHWAY.....	
COUNTY ROAD.....	

Arrows near road shields indicate the start and end points of routes.

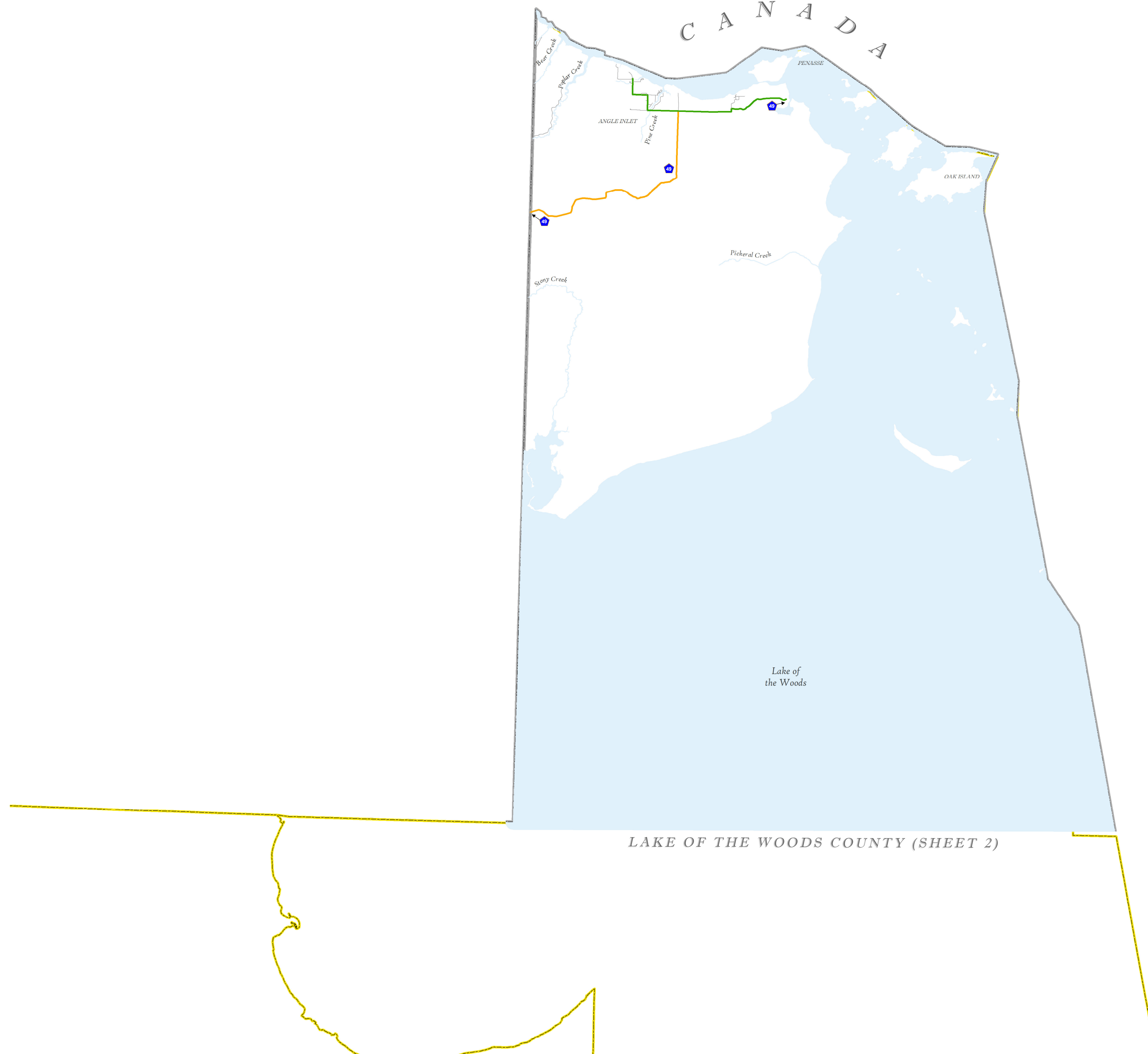
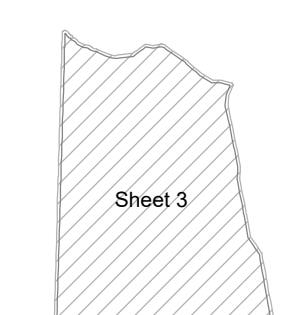
BOUNDARY FEATURES

STATE OF MINNESOTA.....	
COUNTY.....	
CIVIL TOWNSHIP.....	

Outline Map of Minnesota showing
location of the County within the state.



Outline Map of the County.
Area of this County 1,779.28 Sq. Miles
Land Area 1,297.87 Sq. Miles
2020 Total County Population 3,763



LAKE OF THE WOODS COUNTY (SHEET 2)

To request information from this document in an alternative format, call 651-366-4718 or 1-800-657-3774 (Greater Minnesota); 711 or 1-800-627-3529 (Minnesota Relay). You may also send an e-mail to ADRequest.dot@state.mn.us. (Please request at least one week in advance.)