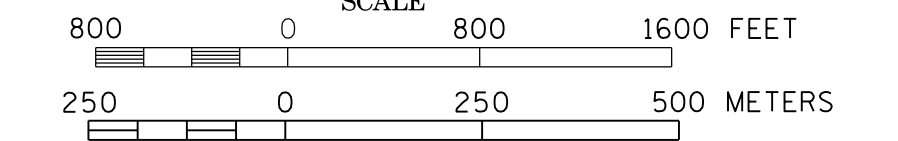


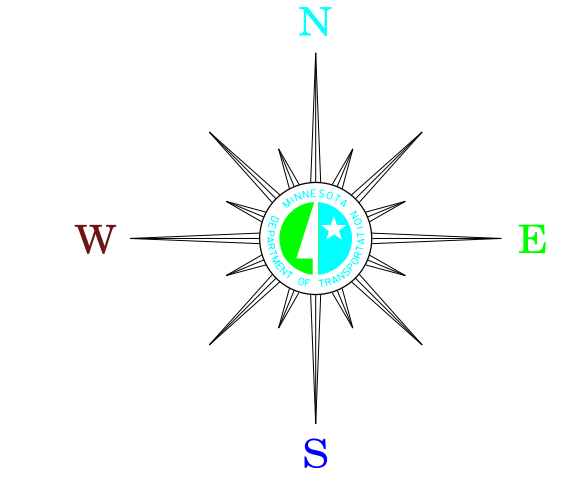
**PLAINVIEW**  
 WABASHA COUNTY  
 POP. 3,340

MUNICIPALITIES OF  
**WABASHA CO.**

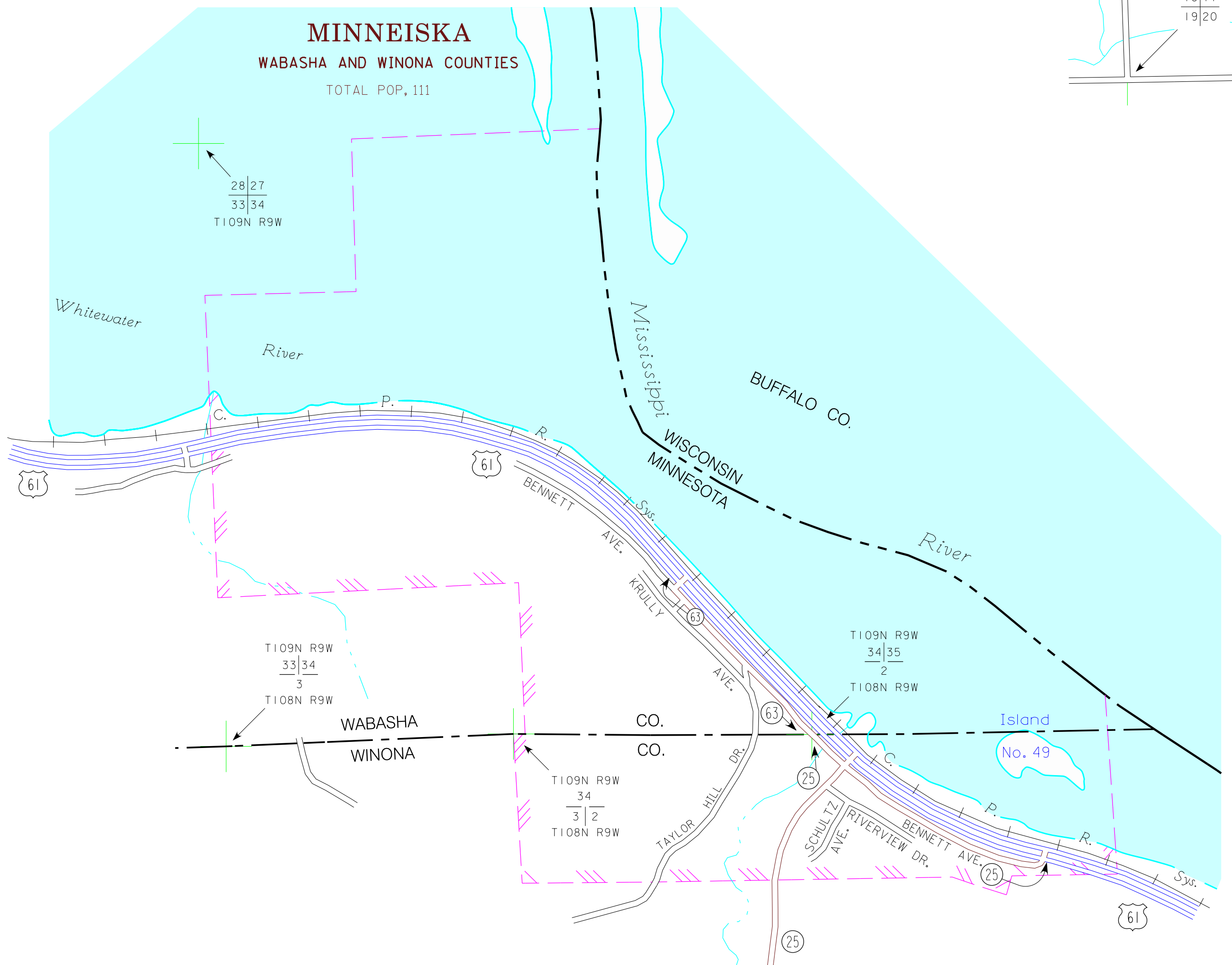
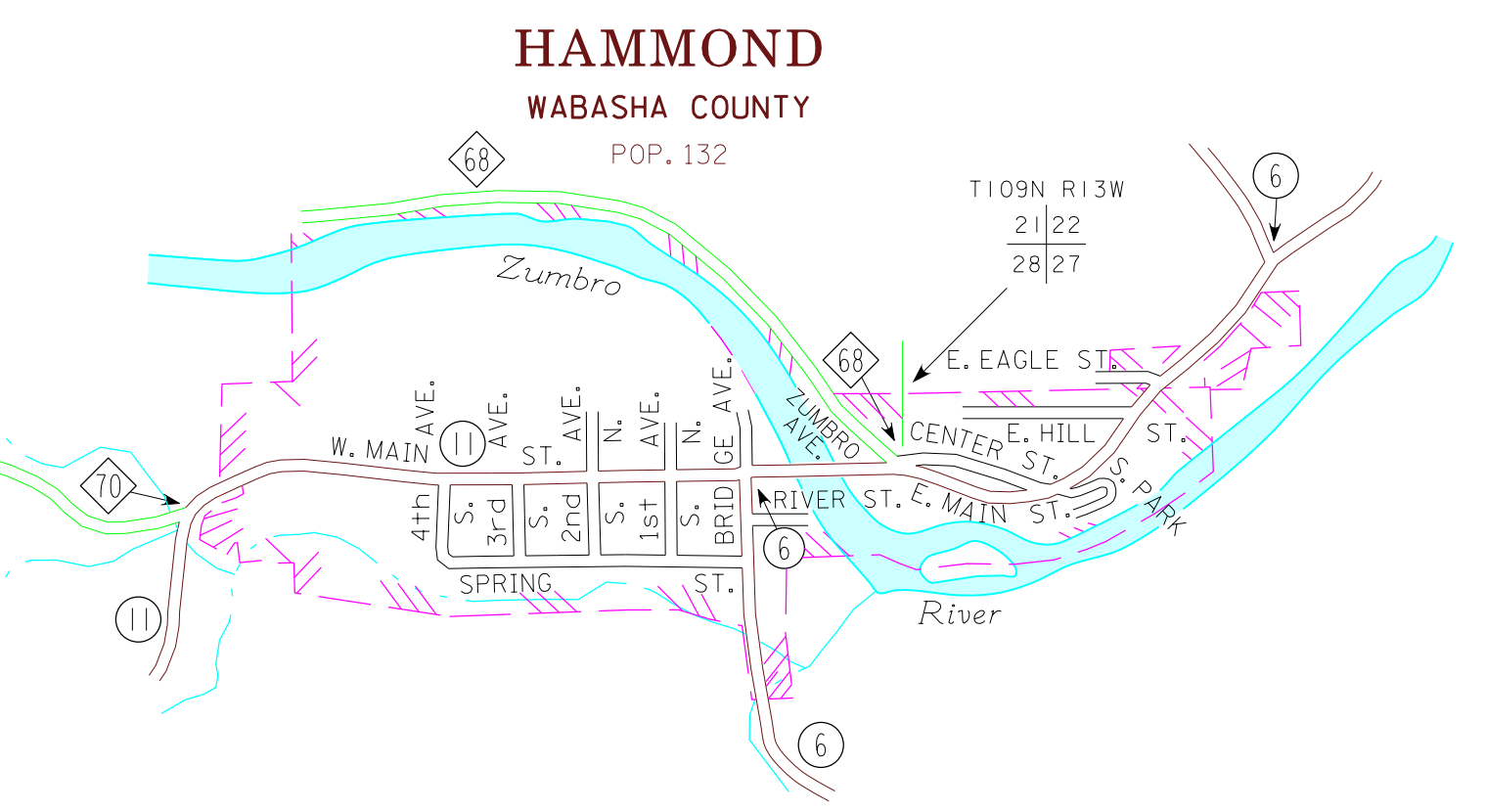
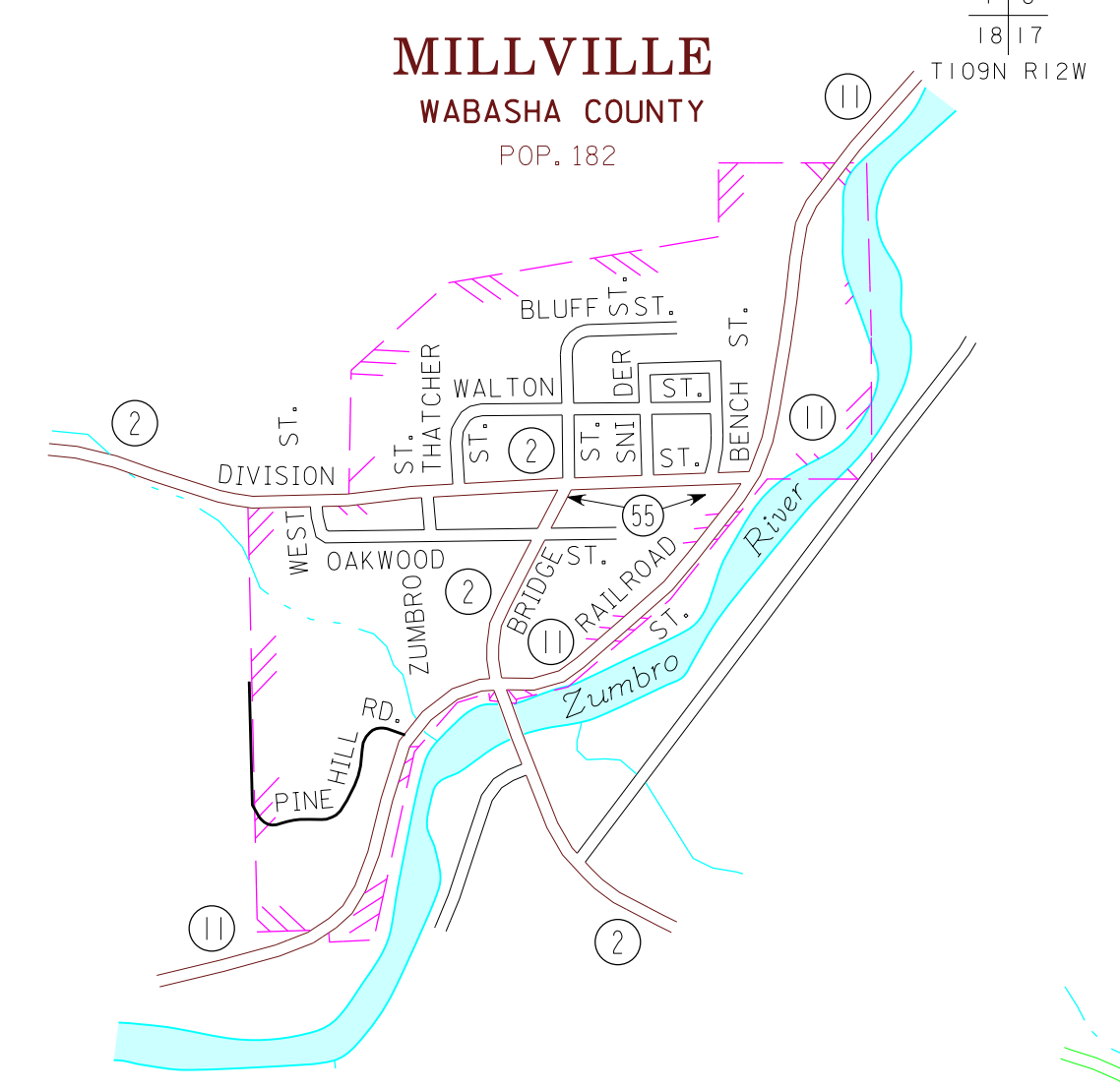
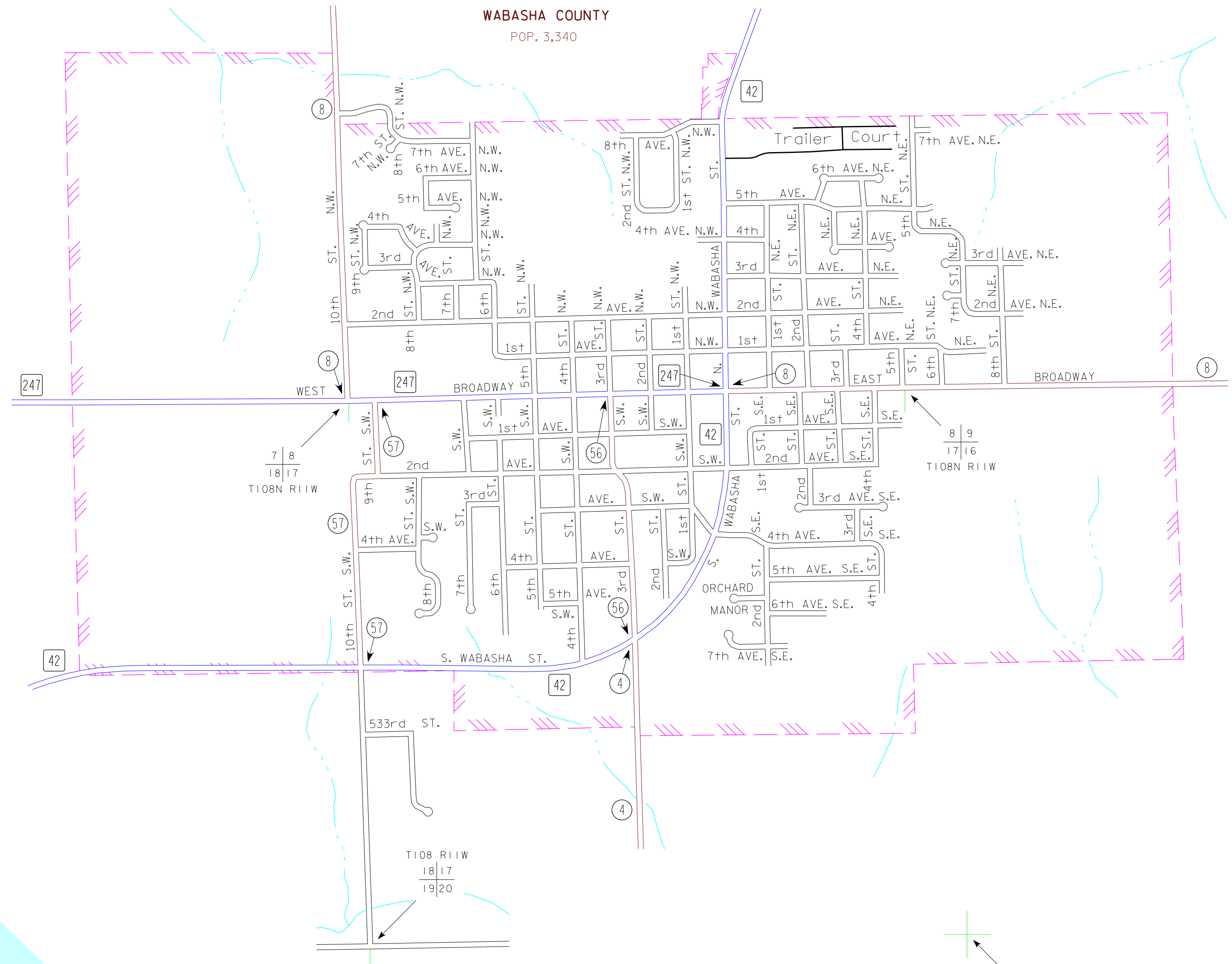
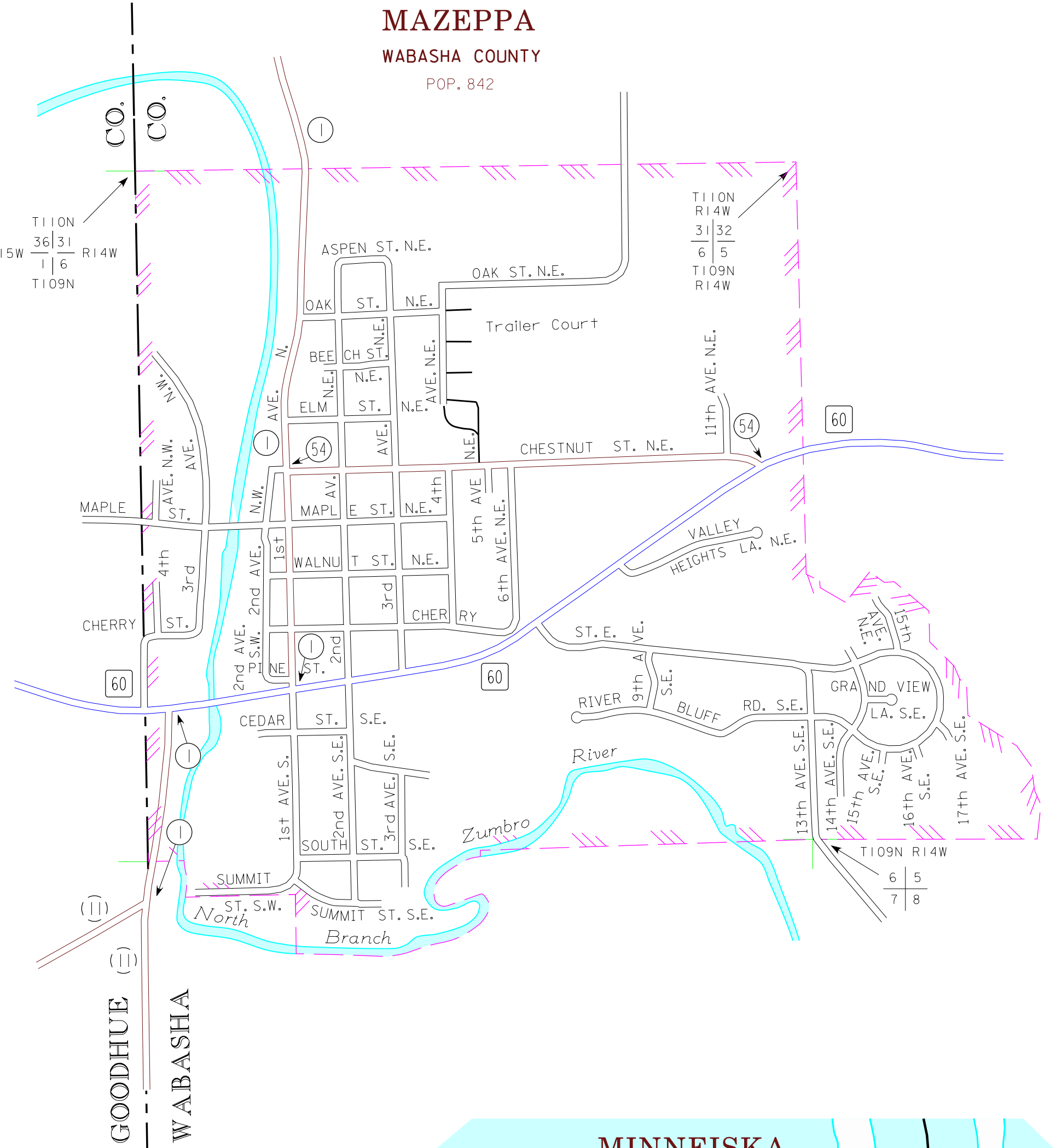
PREPARED BY THE  
 MINNESOTA DEPARTMENT OF TRANSPORTATION  
 OFFICE OF TRANSPORTATION SYSTEM MANAGEMENT  
 IN COOPERATION WITH  
 U.S. DEPARTMENT OF TRANSPORTATION  
 FEDERAL HIGHWAY ADMINISTRATION



2015  
 BASIC DATA - 2009



- LEGEND**
- INTERSTATE TRUNK HIGHWAY..... (I-35)
  - U.S. TRUNK HIGHWAY..... (US-10)
  - STATE TRUNK HIGHWAY..... (ST-55)
  - COUNTY STATE AID HIGHWAY..... (CS-23)
  - COUNTY ROAD..... (C-19)
  - PUBLIC ROAD.....
  - PRIVATE ROAD.....
  - CORPORATE LIMITS.....



- MUNICIPALITIES SHOWN  
 ON THIS SHEET
- HAMMOND
  - MAZEPPA
  - MILLVILLE
  - MINNEISKA
  - PLAINVIEW

To request information from this document in an alternative format, call 651-366-4718 or 1-800-657-3774 (Greater Minnesota); 711 or 1-800-627-3529 (Minnesota Relay). You may also send an e-mail to ADRequest.dot@state.mn.us. (Please request at least one week in advance).

NOTE: 2010 U.S. CENSUS FIGURES SHOWN FOR ALL MUNICIPALITIES UNLESS OTHERWISE STATED.