

MUNICIPALITY OF ELLENDALE

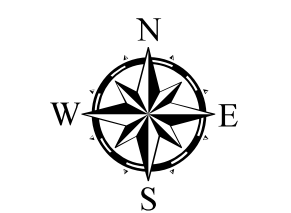
PREPARED BY THE
MINNESOTA DEPARTMENT OF TRANSPORTATION
OFFICE OF TRANSPORTATION SYSTEM MANAGEMENT

IN COOPERATION WITH
U.S. DEPARTMENT OF TRANSPORTATION
FEDERAL HIGHWAY ADMINISTRATION



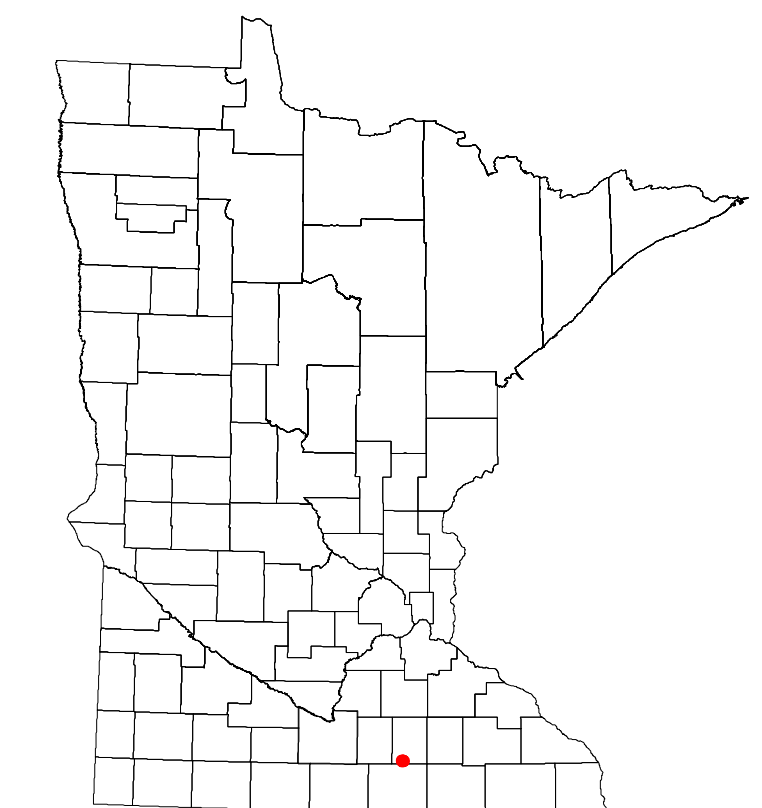
2023

Projection:
Transverse Mercator
NAD 1986
UTM Zone 15

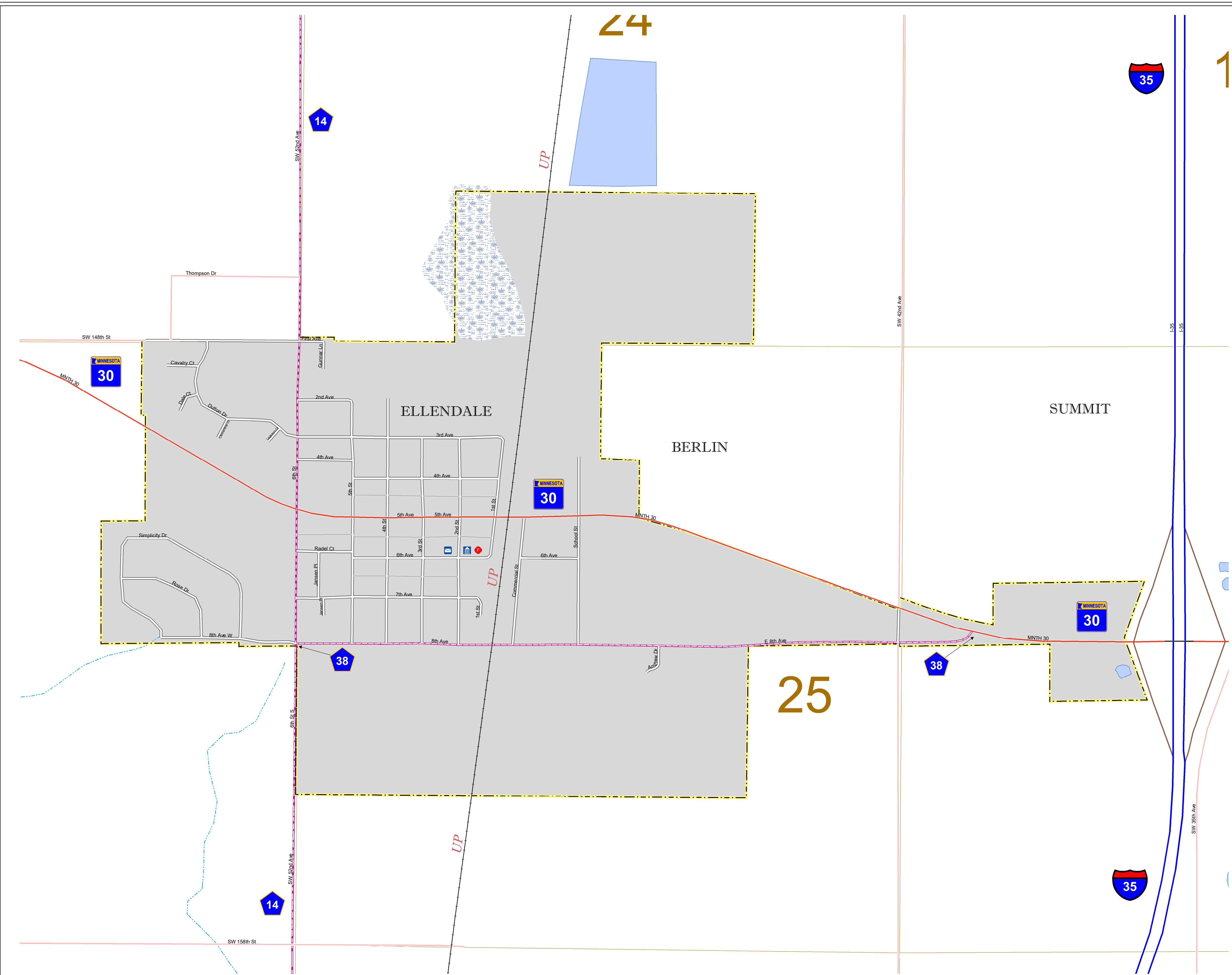


North American Datum
of 1986

ROAD AND ROADWAY FEATURES	PUBLIC SERVICE FEATURES
INTERSTATE	MINOT OFFICE
US HIGHWAY	MINOT TRUCK STATION
MIN HIGHWAY	HIGHWAY PATROL DISTRICT OFFICE
COUNTY STATE AID HIGHWAY	STATE TRAVEL INFORMATION CENTER
COUNTY ROAD	REST AREA (Full Service)
MUNICIPAL STREET	REST AREA (Quick Turn)
MUNICIPAL STATE AID STREET	WAYSIDE (Only on Pk Trunk)
PRIVATE STREET/ROAD	PUBLIC ACCESS POINT
TOWNSHIP ROAD	FARMS
UNORGANIZED TERRITORY ROAD	PORT OF ENTRY
RAMP OR CONNECTOR	PARK AND RIDE LOT
INTERSTATE EXIT	PUBLIC UNIVERSITY/COLLEGE
GREAT RIVER ROAD	PRIVATE UNIVERSITY/COLLEGE
OTHER ROADS	ELEMENTARY SCHOOL
FARMROAD	MODULAR SCHOOL
STATE PARK	HIGH SCHOOL
NATIONAL MONUMENT	
NATIONAL FOREST	
STATE FOREST	
NATIONAL WILDLIFE STATE GAME	
RAILROAD AND RAILWAY FEATURES	AVIATION FEATURES
RAILROAD	COMMERCIAL AIRPORT
EMPIRE BUILDER STATION (AIRTRAK)	GENERAL AIRPORT
NORTHSTAR STATION (COMMUTER)	AIRSTRIP
LIGHT RAIL	SEAPLANE
BLUE LINE STATION	AIRPORT RUNWAY
GREEN LINE STATION	
INFRASTRUCTURE FEATURES	CULTURAL FEATURES
LONG BRIDGE (100' OR GREATER SPAN)	STATE HISTORIC MARKER
RAILROAD BRIDGE (20' TO 100' SPAN)	HISTORIC DISTRICT
MINOR BRIDGE (2' TO 20' SPAN)	HISTORIC SITE
ROAD TUNNEL (100' OR GREATER SPAN)	MONUMENT
RAILROAD TUNNEL (100' OR GREATER SPAN)	CEMETERY
RAILROAD BRIDGE (LESSER THAN 100' SPAN)	
SKYWAY	TRIBAL LAND
PEDESTRIAN BRIDGE	COUNTY
PEDESTRIAN TUNNEL	MUNICIPALITY
DAM	ADJACENT MUNICIPALITY
LOCK AND DAM	FEDERAL ADJUSTED URBAN AREA (2014)
PUBLIC FACILITIES	MILITARY
STATE CAPITOL	STATE PARK
FEDERAL COURTHOUSE	REGIONAL PARK
COUNTY COURTHOUSE	NATIONAL AND STATE FOREST
ARMORY	STATE FOREST
CITY HALL	NATIONAL TRAIL
TOWN HALL	WILDLIFE REFUGE AREA
COMMUNITY CENTER	WILDLIFE MANAGEMENT AREA
ARENA	HYDROLOGIC FEATURES
STADIUM	RIVER OR STREAM (PERENNIAL)
POST OFFICE	LAKE, POND OR RESERVOIR
POLICE STATION	STREAM (PERENNIAL)
FIRE STATION	DRAINAGE DITCH
PUBLIC LIBRARY	
PUBLIC MUSEUM	
EVENT CENTER	
CITY CENTERS	WETLAND
TRIBAL GOVERNMENT CENTER	ISLAND OR LAND
CITY CENTER	REGIONAL WATERSHED
LOCALLY KNOWN PLACE	
UNINCORPORATED COMMUNITY	



Population (U.S. Census 2020): 676



LAST EDITED ON 12-10-2023

To request information from this document in an alternative format, call 651-366-4718 or 1-800-657-3774 (Greater Minnesota); 711 or 1-800-627-3529 (Minnesota Relay). You may also send an e-mail to ADRequest.dot@state.mn.us. (Please request at least one week in advance.)