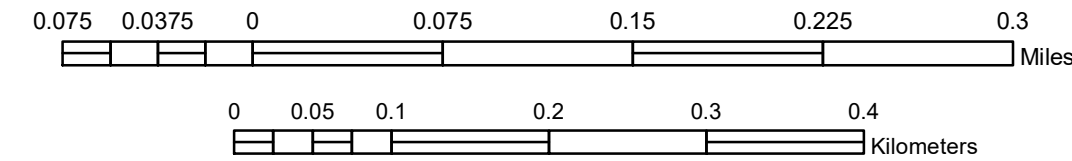


# MUNICIPALITY OF LAUDERDALE

PREPARED BY THE  
MINNESOTA DEPARTMENT OF TRANSPORTATION  
OFFICE OF TRANSPORTATION SYSTEM MANAGEMENT

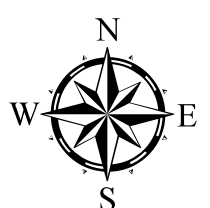
IN COOPERATION WITH  
U.S. DEPARTMENT OF TRANSPORTATION  
FEDERAL HIGHWAY ADMINISTRATION

SCALE



1 in = 400 ft

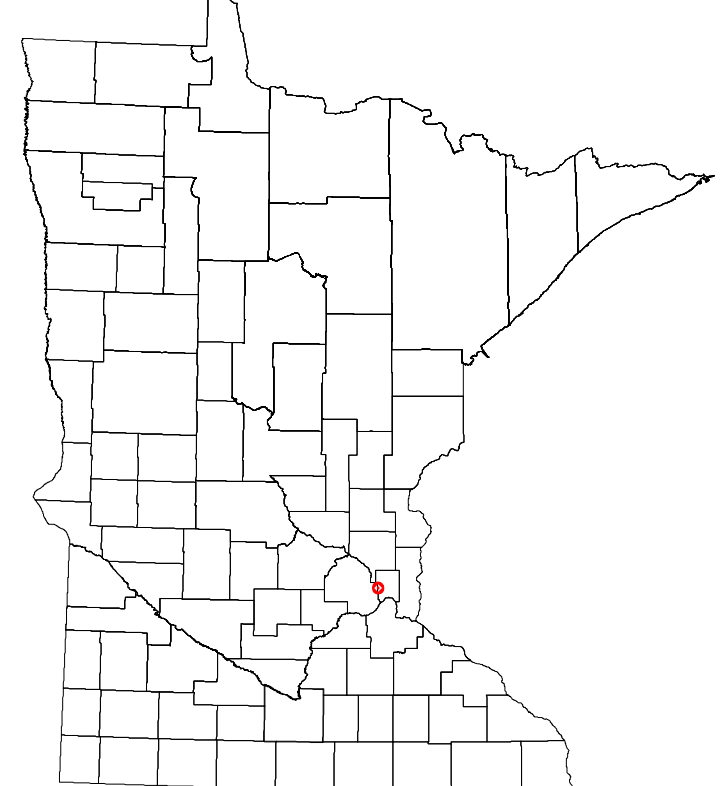
2023



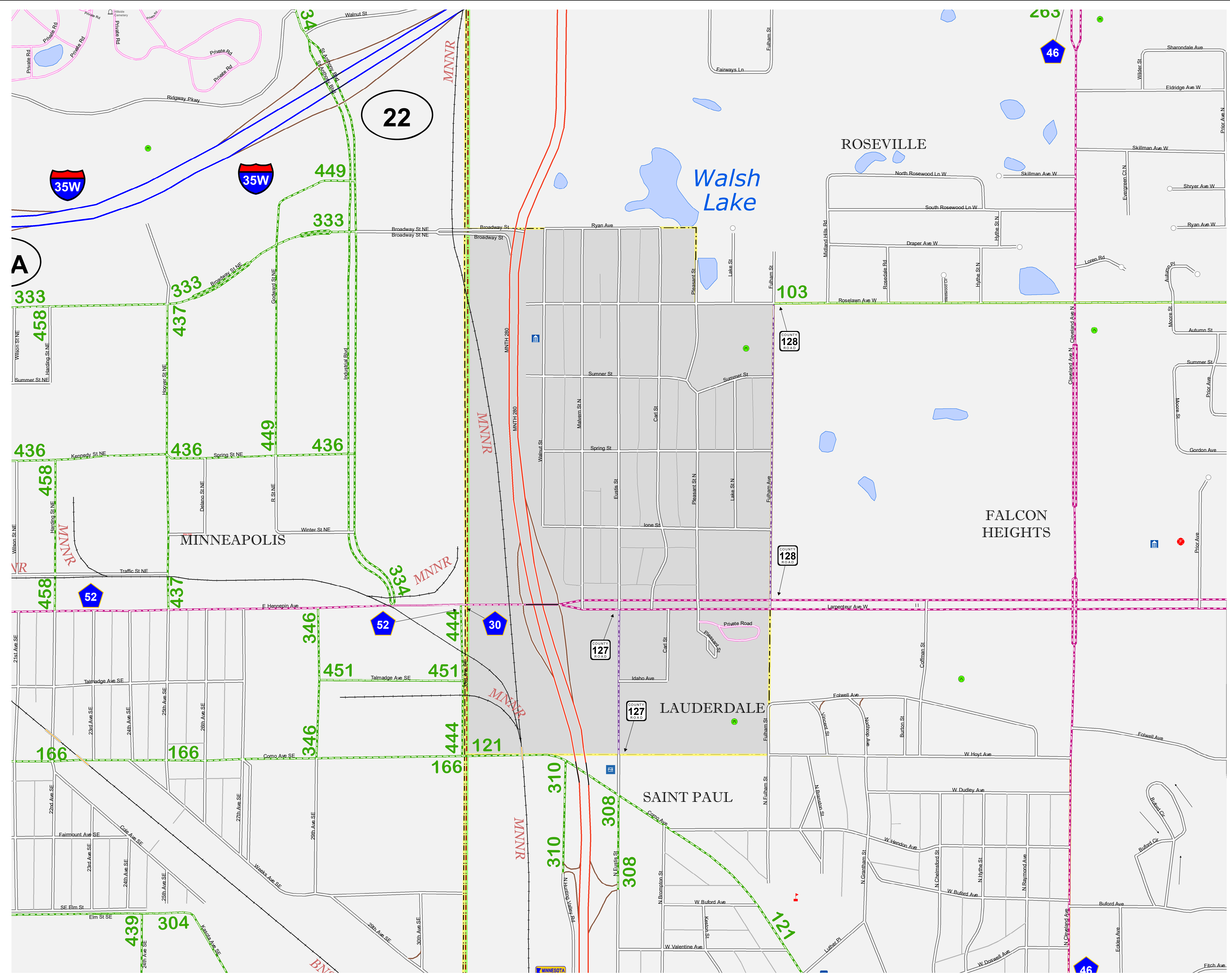
Projection:  
Transverse Mercator  
NAD 1986  
UTM Zone 15

North American Datum  
of 1986

ROAD AND ROADWAY FEATURES	PUBLIC SERVICE FEATURES
INTERSTATE	MINOT OFFICE
US HIGHWAY	MINOT TRUCK STATION
STATE AID HIGHWAY	HIGHWAY PATROL DISTRICT OFFICE
COUNTY ROAD	STATE TRAVEL INFORMATION CENTER
MUNICIPAL STREET	REST AREA (Full Service)
MUNICIPAL STATE AID STREET	REST AREA (Quick Turn)
PRIVATE STREET/ROAD	WAYSIDE (Only on Pkwy/Trk+)
TOWNSHIP ROAD	PUBLIC ACCESS POINT
UNORGANIZED TERRITORY ROAD	LOCAL PARK
RAILROAD OR CONNECTOR	FARMS/GROUNDS
GREAT RIVER ROAD	PORT OF ENTRY
OTHER ROAD	PARK AND RIDE LOT
FARMROAD	PUBLIC UNIVERSITY/COLLEGE
STATE PARK	PRIVATE UNIVERSITY/COLLEGE
NATIONAL PARK	ELEMENTARY SCHOOL
MILITARY	MIDDLE SCHOOL
NATIONAL FOREST	STATE GAME
NATIONAL WILDLIFE	HIGH SCHOOL
STATE FOREST	
STATE GAME	
RAILROAD AND RAILWAY FEATURES	AVIATION FEATURES
EMPIRE BUILDER STATION (AIRTRAK)	COMMERCIAL AIRPORT
NORTHSTAR STATION (COMMUTER)	GENERAL AIRPORT
LIGHT RAIL	AIRSTRIP
BLUE LINE STATION	SEAPLANE
GREEN LINE STATION	AIRPORT RUNWAY
INFRASTRUCTURE FEATURES	CULTURAL FEATURES
LONG BRIDGE (100' OR GREATER SPAN)	STATE HISTORIC MARKER
MAJOR BRIDGE (20' TO 100' SPAN)	HISTORIC DISTRICT
MINOR BRIDGE (< 20' SPAN)	HISTORIC SITE
ROAD TUNNEL (100' OR GREATER SPAN)	MONUMENT
RAILROAD BRIDGE (100' OR GREATER SPAN)	CEMETERY
RAILROAD BRIDGE (LESSER 100' SPAN)	
SKYWAY	BOUNDARY FEATURES
PEDESTRIAN BRIDGE	TRIBAL LAND
PEDESTRIAN TUNNEL	COUNTY
LOCK AND DAM	MUNICIPALITY
PUBLIC FACILITIES	ADJACENT MUNICIPALITY
STATE CAPITOL	FEDERAL ADJUSTED URBAN AREA (2014)
FEDERAL COURTHOUSE	MILITARY
COUNTY COURTHOUSE	STATE PARK
ARMORY	REGIONAL PARK
CITY HALL	NATIONAL FOREST
COMMUNITY CENTER	NATIONAL AND STATE FOREST
ARENA	STATE FOREST
STADIUM	NATIONAL TRAIL
POST OFFICE	WILDLIFE REFUGE AREA
POLICE STATION	WILDLIFE MANAGEMENT AREA
FIRE STATION	RIVER OR STREAM (PERMANENT)
PUBLIC LIBRARY	LAKE, POND OR RESERVOIR
PUBLIC MUSEUM	STREAM (PERMANENT)
EVENT CENTER	DRAINAGE DITCH
CITY CENTERS	WETLAND
TRIBAL GOVERNMENT CENTER	ISLAND OR LAND
CITY CENTER	REGIONAL WATERSHED
LOCALLY KNOWN PLACE	
UNINCORPORATED COMMUNITY	



Population (U.S. Census 2020): 2271



To request information from this document in an alternative format, call 651-366-4718 or 1-800-657-3774 (Greater Minnesota); 711 or 1-800-627-3529 (Minnesota Relay). You may also send an e-mail to ADarequest.dot@state.mn.us. (Please request at least one week in advance.)

LAST EDITED ON 12-10-2023