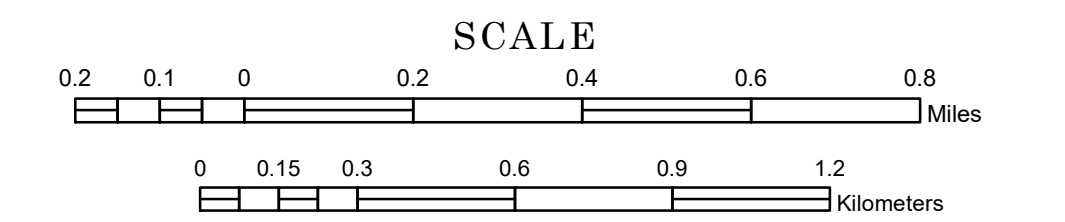


MUNICIPALITY OF TAYLORS FALLS

PREPARED BY THE
MINNESOTA DEPARTMENT OF TRANSPORTATION
OFFICE OF TRANSPORTATION SYSTEM MANAGEMENT

IN COOPERATION WITH
U.S. DEPARTMENT OF TRANSPORTATION
FEDERAL HIGHWAY ADMINISTRATION

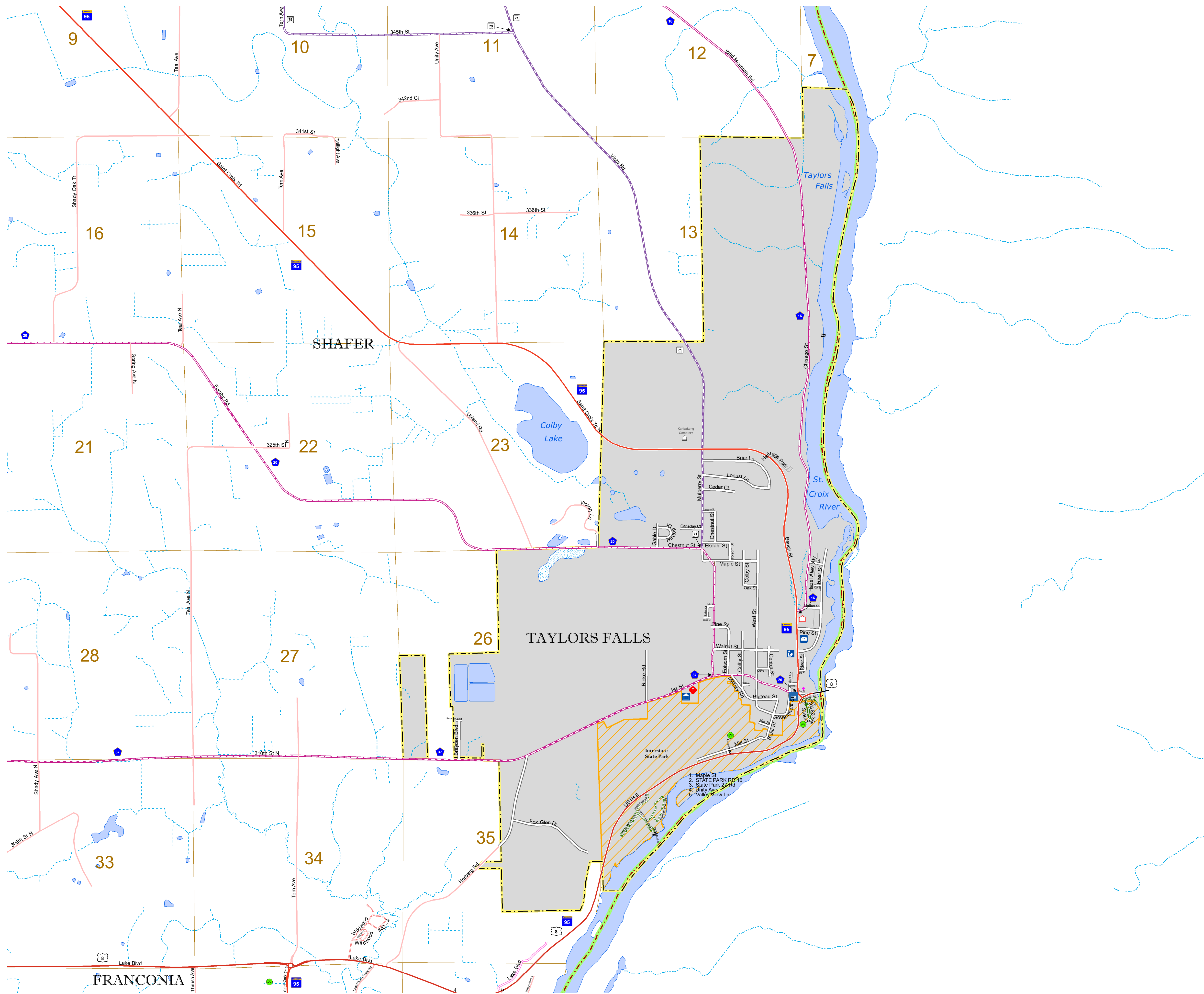


2023

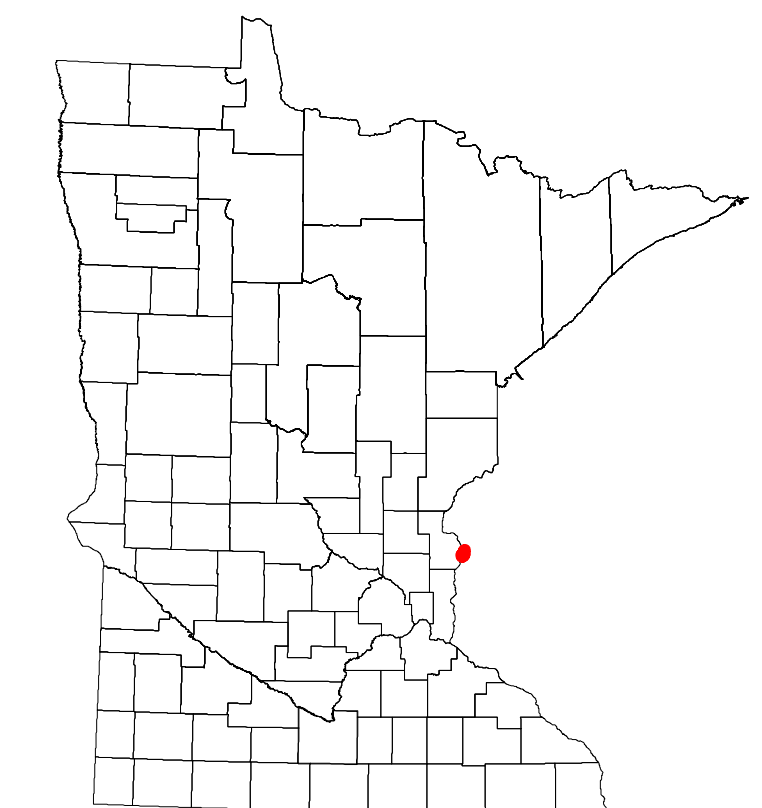
Projection:
Transverse Mercator
NAD 1986
UTM Zone 15



North American Datum
of 1986



ROAD AND ROADWAY FEATURES	PUBLIC SERVICE FEATURES
INTERSTATE	MINOT OFFICE
US HIGHWAY	MINOT TRUCK STATION
MIN HIGHWAY	HIGHWAY PATROL DISTRICT OFFICE
COUNTY STATE AID HIGHWAY	STATE TRAVEL INFORMATION CENTER
COUNTY ROAD	REST AREA (Full Service)
MUNICIPAL STREET	REST AREA (Only Truck)
MUNICIPAL STATE AID STREET	WAYSIDE (Only on Pk Trk 1)
PRIVATE STREET/ROAD	PUBLIC ACCESS POINT
TOWNSHIP ROAD	LOCAL PARK
UNORGANIZED TERRITORY ROAD	FARMS/GROUNDS
RAMP OR CONNECTOR	PORT OF ENTRY
INTERSTATE EXIT	PARK AND RIDE LOT
GREAT RIVER ROAD	PUBLIC UNIVERSITY/COLLEGE
OTHER ROADS	PRIVATE UNIVERSITY/COLLEGE
FARMROAD	ELEMENTARY SCHOOL
INDUS SERVICE	MIDDLE SCHOOL
MILITARY	NATIONAL FOREST STATE GAME
	HIGH SCHOOL
RAILROAD AND RAILWAY FEATURES	AVIATION FEATURES
EMPIRE BUILDER STATION (AIRTRAK)	COMMERCIAL AIRPORT
NORTHSTAR STATION (COMMUTER)	GENERAL AIRPORT
LIGHT RAIL	AIRSTRIP
BLUE LINE STATION	SEAPLANE
GREEN LINE STATION	AIRPORT RUNWAY
INFRASTRUCTURE FEATURES	CULTURAL FEATURES
LONG BRIDGE (100' OR GREATER SPAN)	STATE HISTORIC MARKER
MAJOR BRIDGE (20' TO 100' SPAN)	HISTORIC DISTRICT
MINOR BRIDGE (0' TO 20' SPAN)	HISTORIC SITE
ROAD TUNNEL (100' OR GREATER SPAN)	MONUMENT
RAILROAD BRIDGE (100' OR GREATER SPAN)	CEMETERY
RAILROAD BRIDGE (LESSER 100' SPAN)	
SKYWAY	BOUNDARY FEATURES
PEDESTRIAN BRIDGE	TRIBAL LAND
PEDESTRIAN TUNNEL	COUNTY
DAM	MUNICIPALITY
LOCK AND DAM	ADJACENT MUNICIPALITY
	FEDERAL ADJUSTED URBAN AREA (2014)
PUBLIC FACILITIES	MILITARY
STATE CAPITOL	STATE PARK
FEDERAL COURTHOUSE	COUNTY COURTHOUSE
CITY HALL	REGIONAL PARK
COMMUNITY CENTER	NATIONAL FOREST
ARENA	NATIONAL AND STATE FOREST
STADIUM	STATE FOREST
POST OFFICE	NATIONAL TRAIL
POLICE STATION	WILDLIFE REFUGE AREA
FIRE STATION	WILDLIFE MANAGEMENT AREA
PUBLIC LIBRARY	
PUBLIC MUSEUM	HYDROLOGIC FEATURES
EVENT CENTER	RIVER OR STREAM (PERMANENT)
	LAKE, POND OR RESERVOIR
	STREAM (PERMANENT)
	DRAINAGE DITCH
	WETLAND
	ISLAND OR LAND
	REGIONAL WATERSHED
CITY CENTERS	
TRIBAL GOVERNMENT CENTER	
CITY CENTER	
LOCALLY INCORPORATED PLACE	
UNINCORPORATED COMMUNITY	



To request information from this document in an alternative format, call 651-366-4718 or 1-800-657-3774 (Greater Minnesota); 711 or 1-800-627-3529 (Minnesota Relay). You may also send an e-mail to ADArequest.dot@state.mn.us. (Please request at least one week in advance.)

LAST EDITED ON 12-10-2023

Population (U.S. Census 2020): 1055