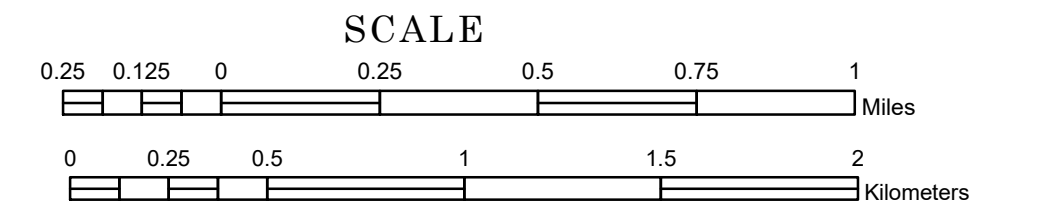


MUNICIPALITY OF
SOUTH SAINT PAUL

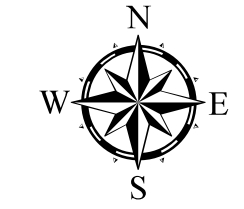
PREPARED BY THE
 MINNESOTA DEPARTMENT OF TRANSPORTATION
 OFFICE OF TRANSPORTATION SYSTEM MANAGEMENT

IN COOPERATION WITH
 U.S. DEPARTMENT OF TRANSPORTATION
 FEDERAL HIGHWAY ADMINISTRATION

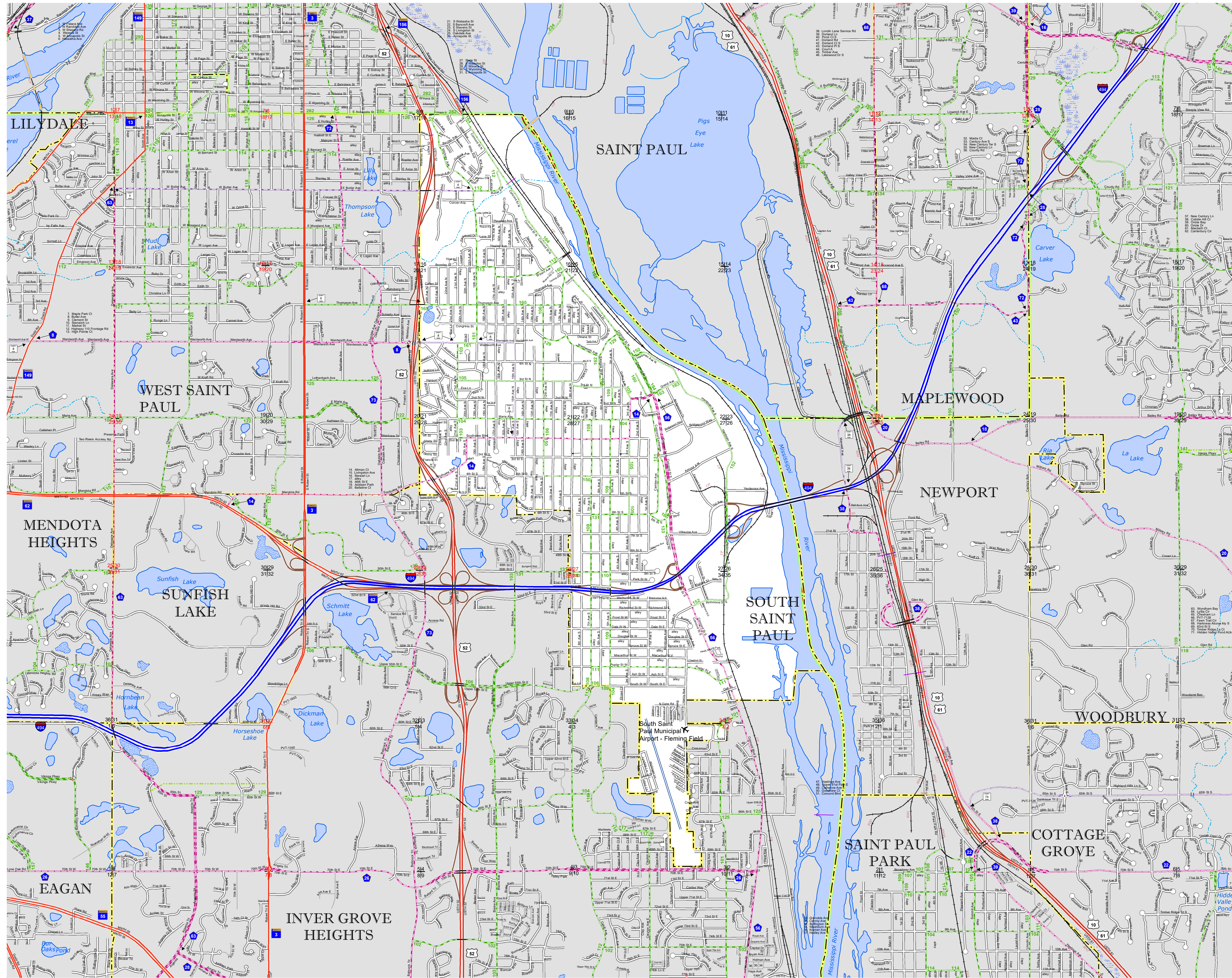


1 in = 1,600 ft
2023

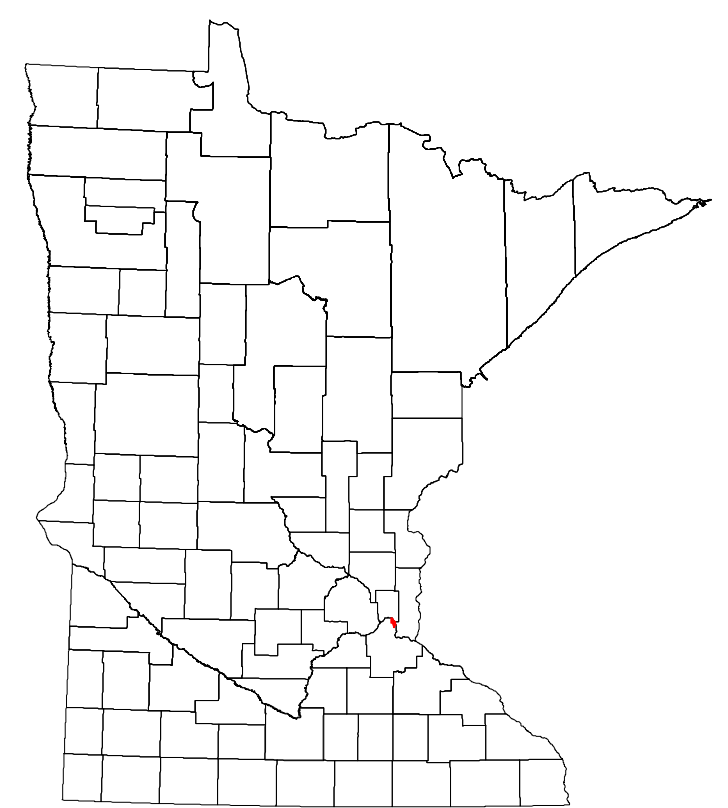
Projection:
 Transverse Mercator
 NAD 1986
 UTM Zone 15



North American Datum
 of 1986



ROAD AND ROADWAY FEATURES	INFRASTRUCTURE FEATURES	AVIATION FEATURES	HYDROLOGIC FEATURES
INTERSTATE	LONG BRIDGE (100' OR GREATER SPAN)	COMMERCIAL AIRPORT	RIVER OR STREAM (PERMANENT)
US HIGHWAY	MAJOR BRIDGE (20' TO 100' SPAN)	GENERAL AIRPORT	LAKE, POND OR RESERVOIR
MN HIGHWAY	MINOR BRIDGE (5' TO 20' SPAN)	AIRSTRIP	STREAM (INTERMITTENT)
COUNTY STATE AID HIGHWAY	ROAD TUNNEL (100' OR GREATER SPAN)	SEAPLANE	DRAINAGE DITCH
COUNTY ROAD	RAILROAD BRIDGE (100' OR GREATER SPAN)	AIRPORT RUNWAY	WETLAND
MUNICIPAL STREET	RAILROAD BRIDGE (Under 100' SPAN)		ISLAND OR LAND
MUNICIPAL STATE AID STREET	SKYWAY		REGIONAL WATERSHED
PRIVATE STREET/ROAD	PEDESTRIAN BRIDGE		OTHER FEATURES
TOWNSHIP ROAD	PEDESTRIAN TUNNEL		
UNORGANIZED TERRITORY ROAD			
RAMP OR CONNECTOR			
GREAT RIVER ROAD			
COUNTY STATE AID HIGHWAY (DNE)			
MUNICIPAL STATE AID STREET (DNE)			
TRUNK HIGHWAY FUTURE PROJECTS			
OTHER ROADS			
FRONTAGE			
TRAIL SERVICE			
MILITARY			
RAILROAD AND RAILWAY FEATURES			
BOUNDARY FEATURES			
COUNTY			
MUNICIPALITY			



Population (U.S. Census 2020): 20,759

To request information from this document in an alternative format, call 651-366-4718 or 1-800-657-3774 (Greater Minnesota); 711 or 1-800-627-3529 (Minnesota Relay). You may also send an e-mail to ADRequest.dot@state.mn.us. (Please request at least one week in advance.)