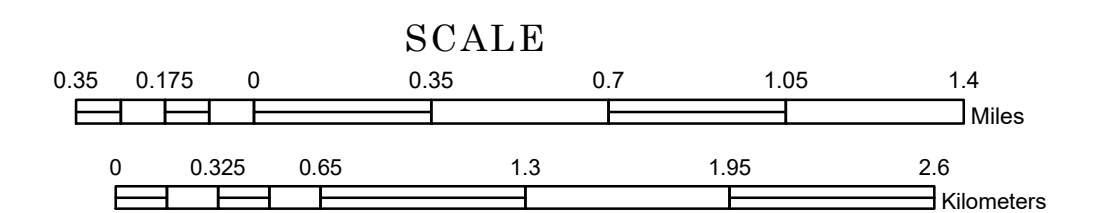


# MUNICIPALITY OF ELK RIVER

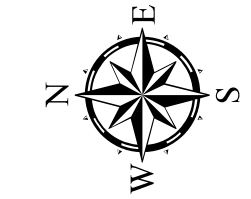
PREPARED BY THE  
MINNESOTA DEPARTMENT OF TRANSPORTATION  
OFFICE OF TRANSPORTATION SYSTEM MANAGEMENT

IN COOPERATION WITH  
U.S. DEPARTMENT OF TRANSPORTATION  
FEDERAL HIGHWAY ADMINISTRATION

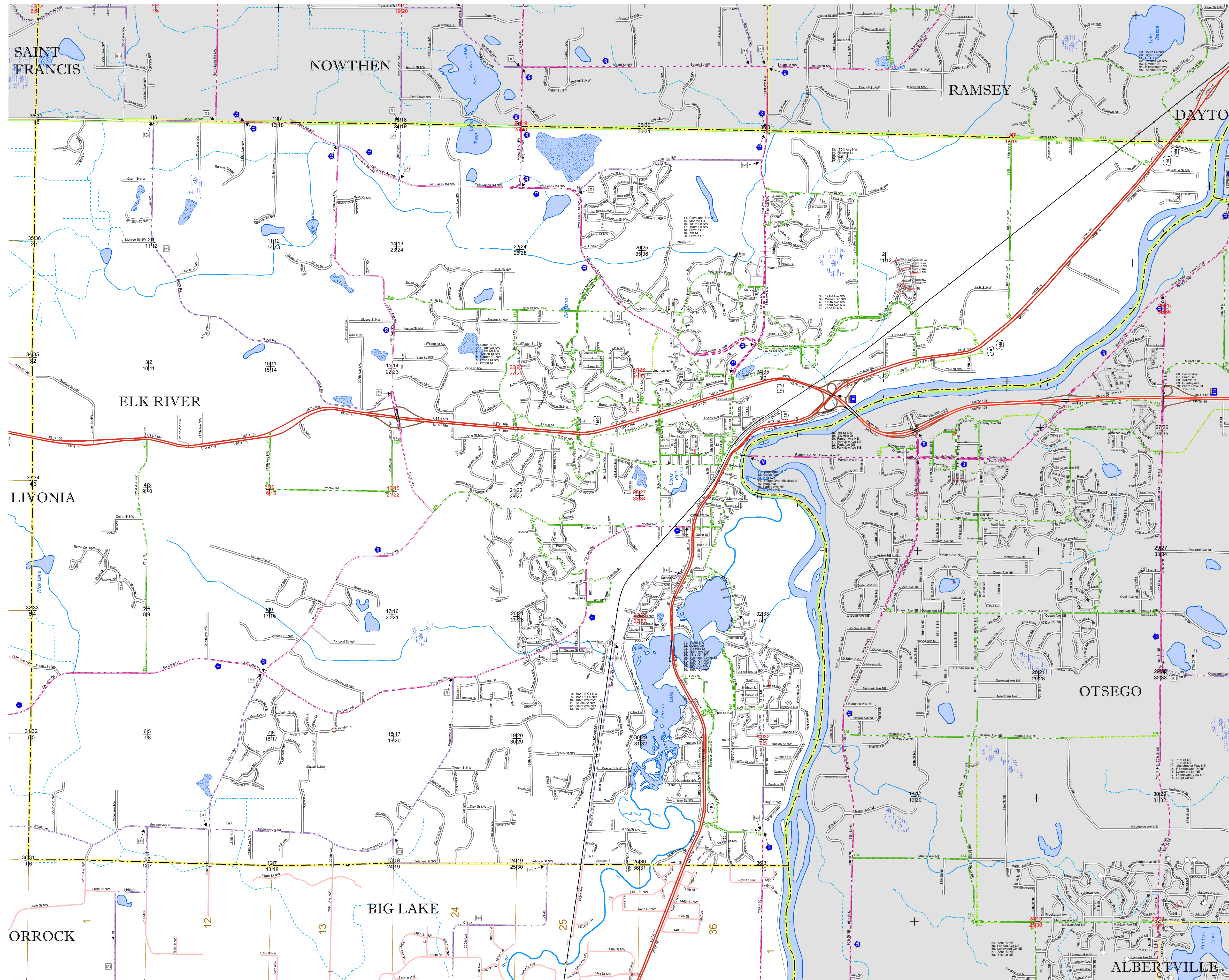


1 in = 2,000 ft  
**2023**

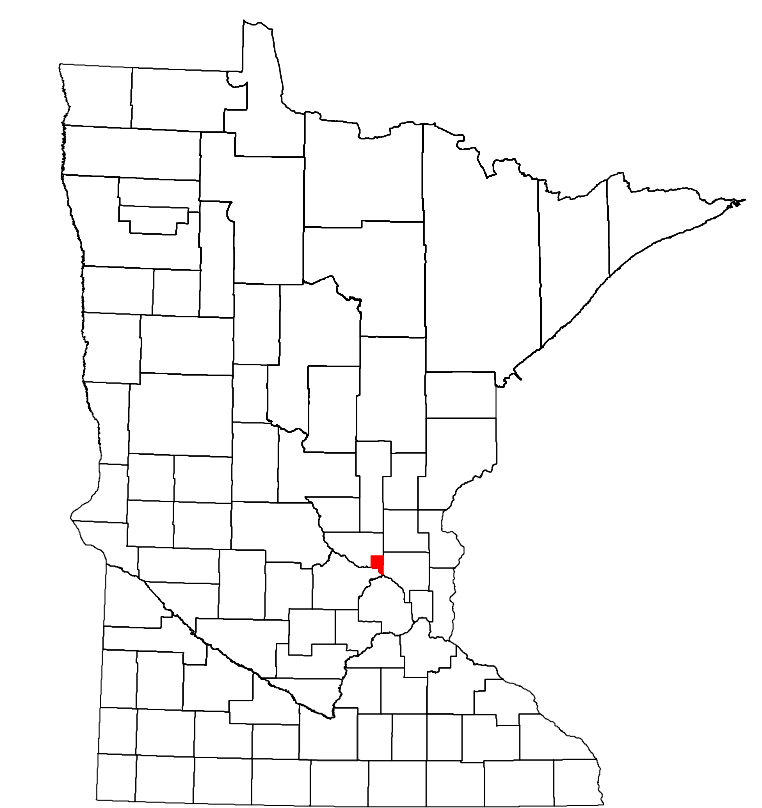
Projection:  
Transverse Mercator  
NAD 1986  
UTM Zone 15



North American Datum  
of 1986



ROAD AND ROADWAY FEATURES		INFRASTRUCTURE FEATURES	
INTERSTATE		LONG BRIDGE (100' OR GREATER SPAN)	
US HIGHWAY		MAJOR BRIDGE (20' TO 100' SPAN)	
MN HIGHWAY		MINOR BRIDGE (5' TO 20' SPAN)	
COUNTY STATE AID HIGHWAY		ROAD TUNNEL (100' OR GREATER SPAN)	
COUNTY STATE AID HIGHWAY (DNE)		RAILROAD BRIDGE (100' OR GREATER SPAN)	
MUNICIPAL STREET		RAILROAD BRIDGE (Under 100' SPAN)	
MUNICIPAL STATE AID STREET		SKYWAY	
PRIVATE STREET/ROAD		PEDESTRIAN BRIDGE	
TOWNSHIP ROAD		PEDESTRIAN TUNNEL	
UNORGANIZED TERRITORY ROAD		<b>AVIATION FEATURES</b>	
RAMP OR CONNECTOR		COMMERCIAL AIRPORT	
GREAT RIVER ROAD		GENERAL AIRPORT	
COUNTY STATE AID HIGHWAY (DNE)		AIRSTRIP	
MUNICIPAL STATE AID STREET (DNE)		SEAPLANE	
TRUNK HIGHWAY FUTURE PROJECTS		AIRPORT RUNWAY	
OTHER ROADS		<b>HYDROLOGIC FEATURES</b>	
FRONTAGE		RIVER OR STREAM (PERMANENT)	
TRAIL SERVICE		LAKE, POND OR RESERVOIR	
MILITARY		STREAM (INTERMITTENT)	
<b>RAILROAD AND RAILWAY FEATURES</b>		DRAINAGE DITCH	
FRONTAGE		WETLAND	
NATIONAL PARK		ISLAND OR LAND	
MONUMENT		REGIONAL WATERSHED	
NATIONAL FOREST		STATE FOREST	
NATIONAL WILDLIFE		STATE GAME	
<b>BOUNDARY FEATURES</b>		<b>OTHER FEATURES</b>	
COUNTY		SECTION CORNER	
MUNICIPALITY			



Population (U.S. Census 2020): 25,835

To request information from this document in an alternative format, call 651-666-4718 or 1-800-657-3774 (Greater Minnesota); 711 or 1-800-627-3529 (Minnesota Relay). You may also send an e-mail to [ADArequest.dot@state.mn.us](mailto:ADArequest.dot@state.mn.us). (Please request at least one week in advance.)