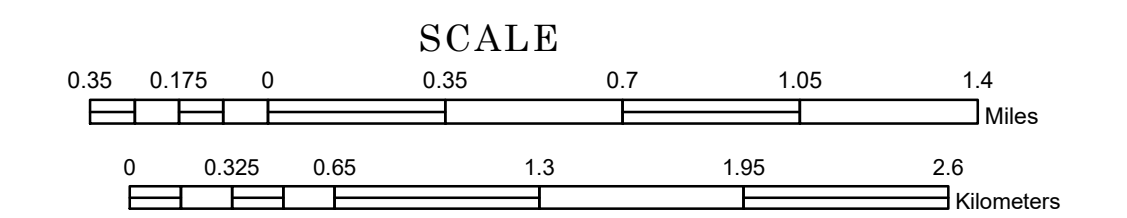


MUNICIPALITY OF DAYTON

PREPARED BY THE
MINNESOTA DEPARTMENT OF TRANSPORTATION
OFFICE OF TRANSPORTATION SYSTEM MANAGEMENT

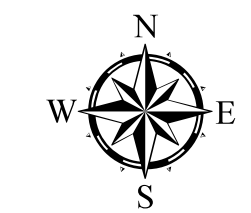
IN COOPERATION WITH
U.S. DEPARTMENT OF TRANSPORTATION
FEDERAL HIGHWAY ADMINISTRATION



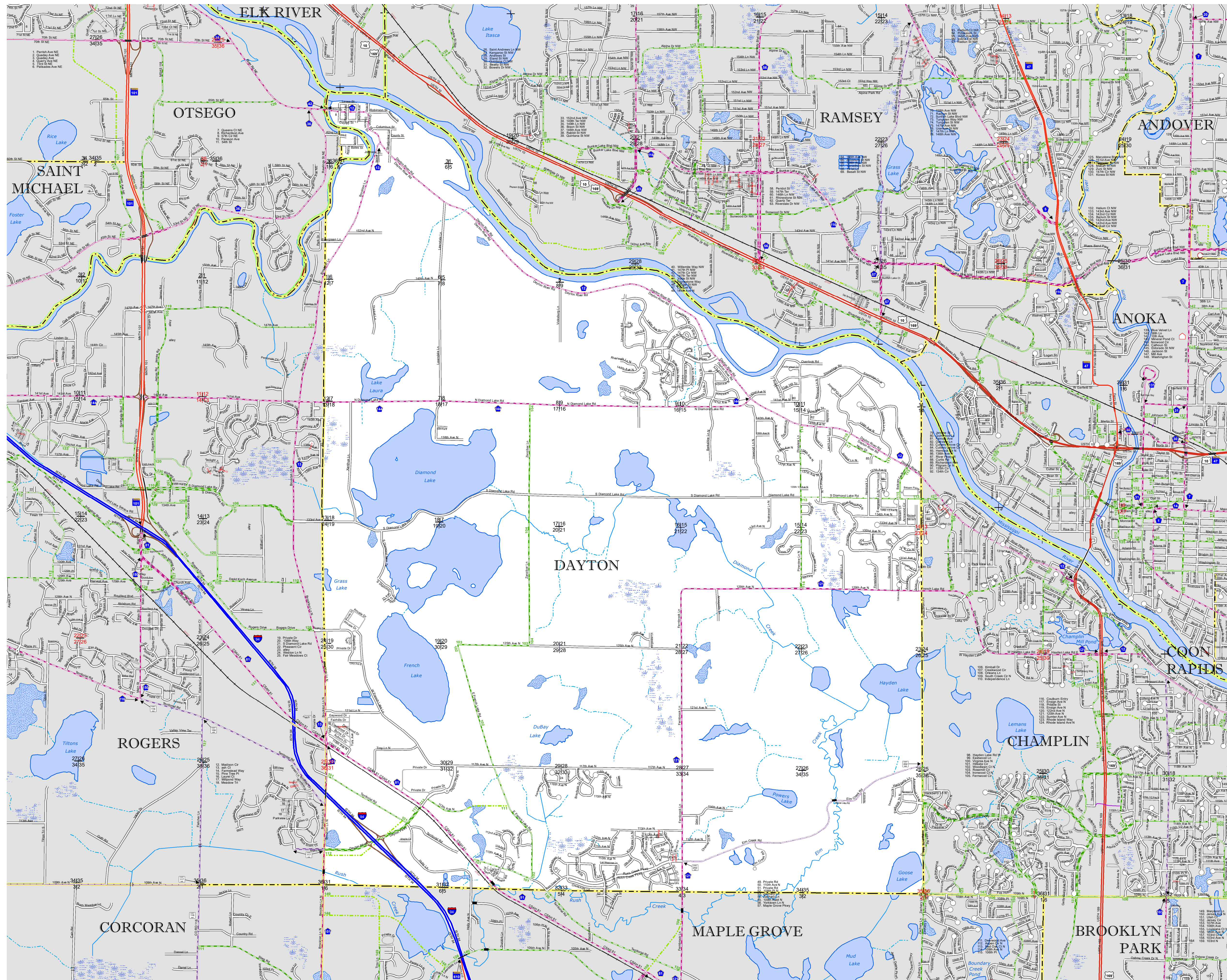
1 in = 2,000 ft

2023

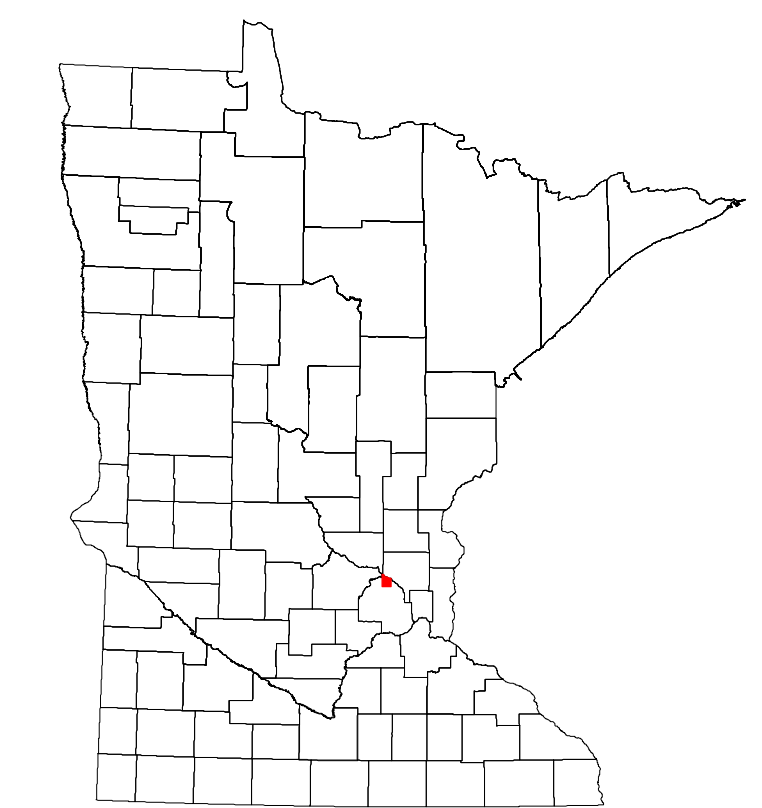
Projection:
Transverse Mercator
NAD 1986
UTM Zone 15



North American Datum
of 1986



ROAD AND ROADWAY FEATURES	INFRASTRUCTURE FEATURES	AVIATION FEATURES	HYDROLOGIC FEATURES
INTERSTATE	LONG BRIDGE (100' OR GREATER SPAN)	COMMERCIAL AIRPORT	RIVER OR STREAM (PERMANENT)
US HIGHWAY	MAJOR BRIDGE (20' TO 100' SPAN)	GENERAL AIRPORT	LAKE, POND OR RESERVOIR
MN HIGHWAY	MINOR BRIDGE (5' TO 20' SPAN)	AIRSTRIP	STREAM (INTERMITTENT)
COUNTY STATE AID HIGHWAY	ROAD TUNNEL (100' OR GREATER SPAN)	SEAPLANE	DRAINAGE DITCH
COUNTY ROAD	RAILROAD BRIDGE (100' OR GREATER SPAN)	AIRPORT RUNWAY	WETLAND
MUNICIPAL STREET	RAILROAD BRIDGE (UNDER 100' SPAN)		ISLAND OR LAND
MUNICIPAL STATE AID STREET	SKYWAY		REGIONAL WATERSHED
PRIVATE STREET/ROAD	PEDESTRIAN BRIDGE		OTHER FEATURES
TOWNSHIP ROAD	PEDESTRIAN TUNNEL		
UNORGANIZED TERRITORY ROAD			
RAMP OR CONNECTOR			
GREAT RIVER ROAD			
COUNTY STATE AID HIGHWAY (DNE)			
MUNICIPAL STATE AID STREET (DNE)			
TRUNK HIGHWAY FUTURE PROJECTS			
OTHER ROADS			
FRONTAGE ROAD			
STATE PARK			
NATIONAL PARK			
NATIONAL MONUMENT			
STATE FOREST			
MILITARY			
NATIONAL FOREST			
NATIONAL WILDLIFE STATE GAME			
RAILROAD AND RAILWAY FEATURES			
COUNTY BOUNDARY FEATURES			
MUNICIPALITY BOUNDARY FEATURES			



Population (U.S. Census 2020): 7,262

To request information from this document in an alternative format, call 651-366-4718 or 1-800-657-3774 (Greater Minnesota); 711 or 1-800-627-3529 (Minnesota Relay). You may also send an e-mail to ADArequest.dot@state.mn.us. (Please request at least one week in advance.)