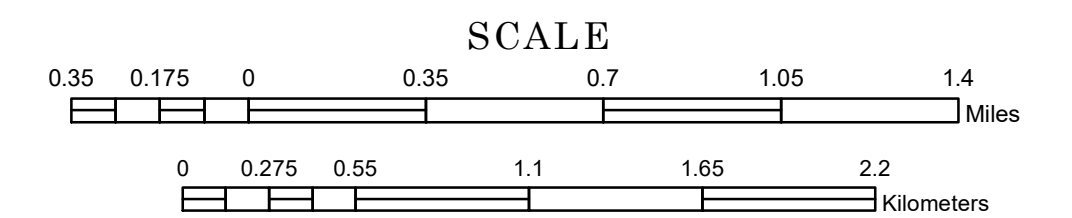


# MUNICIPALITY OF CHISAGO CITY

PREPARED BY THE  
MINNESOTA DEPARTMENT OF TRANSPORTATION  
OFFICE OF TRANSPORTATION SYSTEM MANAGEMENT

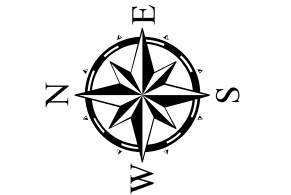
IN COOPERATION WITH  
U.S. DEPARTMENT OF TRANSPORTATION  
FEDERAL HIGHWAY ADMINISTRATION



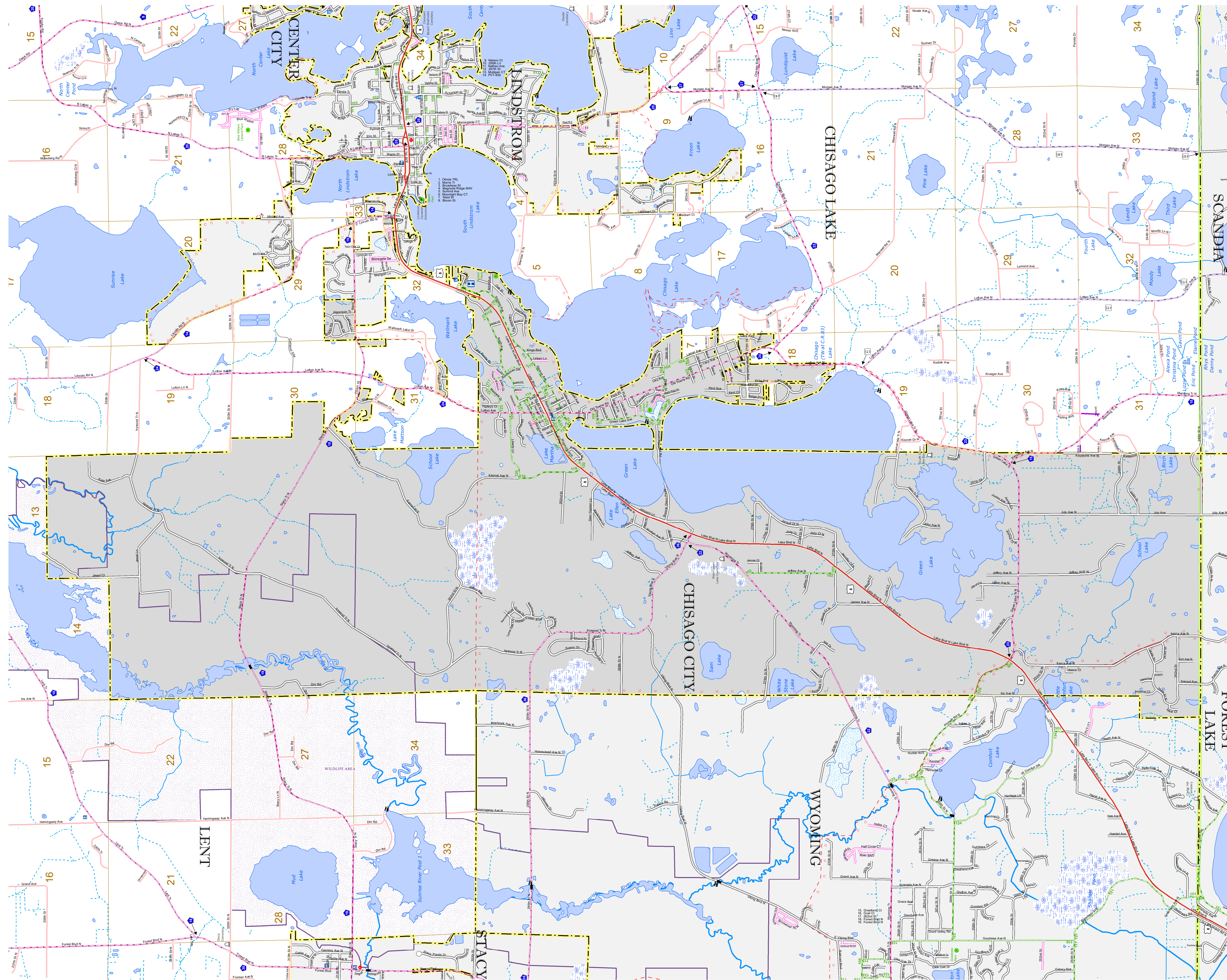
1 in = 2,000 ft

2023

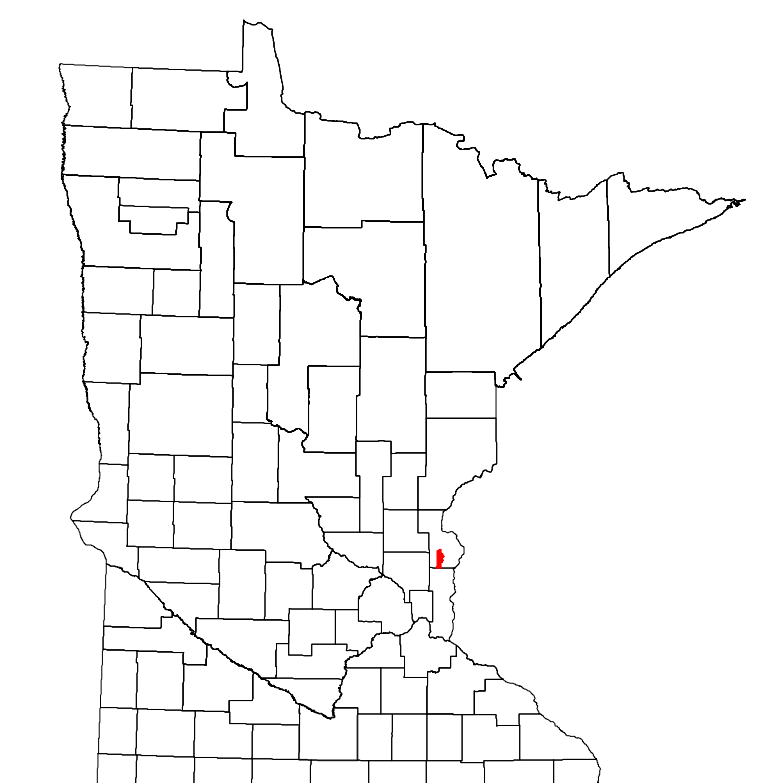
Projection:  
Transverse Mercator  
NAD 1986  
UTM Zone 15



North American Datum  
of 1986



ROAD AND ROADWAY FEATURES	PUBLIC SERVICE FEATURES
INTERSTATE	MINOT OFFICE
US HIGHWAY	MINOT TRUCK STATION
MIN HIGHWAY	HIGHWAY PATROL DISTRICT OFFICE
COUNTY STATE AID HIGHWAY	STATE TRAVEL INFORMATION CENTER
COUNTY ROAD	REST AREA (FULL SERVICE)
MUNICIPAL STREET	REST AREA (VAULT TRAILS)
MUNICIPAL STATE AID STREET	WAYSIDE (VAULT OR PIT TOL)
PRIVATE STREET/ROAD	PUBLIC ACCESS POINT
TOWNSHIP ROAD	LOCAL PARK
UNORGANIZED TERRITORY ROAD	FAIRGROUNDS
RAMP OR CONNECTOR	PORT OF ENTRY
INTERSTATE EXIT	PARK AND RIDE LOT
GREAT RIVER ROAD	PUBLIC UNIVERSITY/COLLEGE
OTHER ROAD	PRIVATE UNIVERSITY/COLLEGE
FRONTAGE	MIDDLE SCHOOL
STATE SERVICE	HIGH SCHOOL
MUNICIPAL	AVIATION FEATURES
	COMMERCIAL AIRPORT
	GENERAL AIRPORT
	ARREST
	SEAPLANE
	AIRPORT RUNWAY
	CULTURAL FEATURES
	STATE HISTORICAL MARKER
	HISTORIC DISTRICT
	HISTORIC SITE
	MONUMENT
	CEMETERY
	BOUNDARY FEATURES
	TRIBAL LAND
	COUNTY
	MUNICIPALITY
	ADJACENT MUNICIPALITY
	FEDERAL ADJUSTED URBAN AREA (2014)
	MILITARY
	STATE PARK
	NATIONAL PARK
	NATIONAL AND STATE FOREST
	STATE FOREST
	NATIONAL TRAIL
	WILDLIFE REFUGUE AREA
	WILDLIFE MANAGEMENT AREA
	HYDROLOGIC FEATURES
	RIVER OR STREAM (PERMANENT)
	LAKE, POND OR RESERVOIR
	STREAM (NONPERMANENT)
	DRAINAGE DITCH
	WETLAND
	ISLAND OR LAND
	REGIONAL WATERSHED
	PUBLIC FACILITIES
	FEDERAL CAPITOL
	FEDERAL COURTHOUSE
	COUNTY COURTHOUSE
	ARMORY
	CITY HALL
	TOWN HALL
	COMALITY CENTER
	ARENA
	STADIUM
	POST OFFICE
	POLICE STATION
	FIRE STATION
	PUBLIC LIBRARY
	PUBLIC MUSEUM
	EVENT CENTER
	CITY CENTERS
	TRIBAL GOVERNMENT CENTER
	CITY CENTER
	LOCALLY KNOWN PLACE
	UNINCORPORATED COMMUNITY



LAST EDITED ON 12-13-2023

Population (U.S. Census 2020): 5,558

To request information from this document in an alternative format, call 651-366-4718 or 1-800-657-3774 (Greater Minnesota); 711 or 1-800-627-3529 (Minnesota Relay). You may also send an e-mail to ADarequest.dot@state.mn.us. (Please request at least one week in advance.)