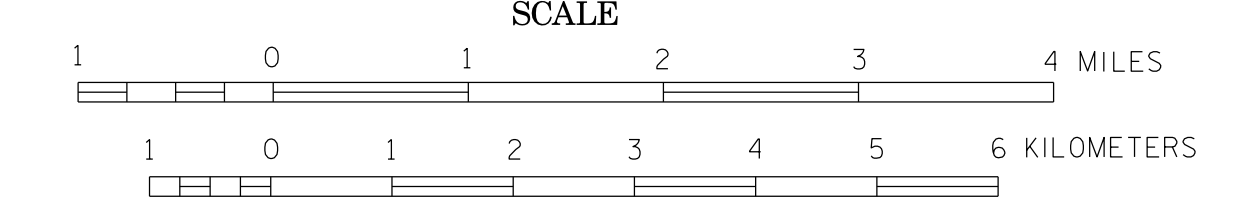
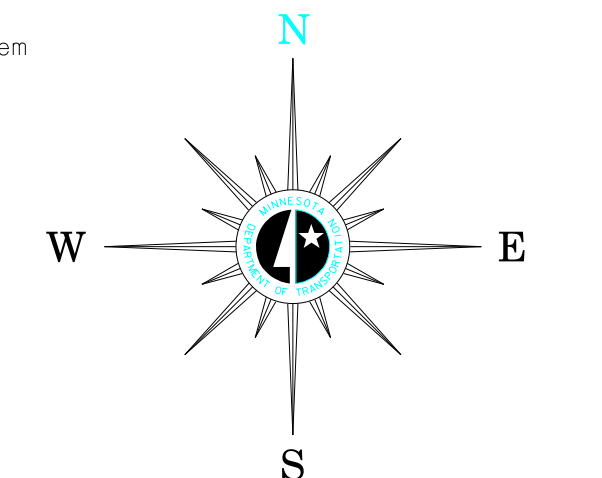


# BICYCLE MAP POLK COUNTY MINNESOTA

PREPARED BY THE  
MINNESOTA DEPARTMENT OF TRANSPORTATION  
OFFICE OF TRANSPORTATION SYSTEM MANAGEMENT



2016  
BASIC DATA - 2015  
Projection: Minnesota Coordinate System  
North Zone  
Lambert Conformal Conic  
North American Datum of 1983



## LEGEND

- (Roadways with shoulders less than 4 feet)
  - 0 - 750 (Fewer than 3 cars / min)
  - 751 - 2500 (3 cars / min)
  - 2501 - 10,000 (12 cars / min)
  - 10,000+ (24+ cars / min)
- (Roadways with shoulders greater than 4 feet)
  - Gravel Roadway
  - Federal, State and Regional Bicycle Trails
  - Mississippi River Trail
  - Interstate / Bicycles Prohibited
  - State or National Forests

## ROAD AND ROADWAY FEATURES

- PROJECTED ROAD
- PRIMITIVE ROAD
- UNIMPROVED ROAD
- GRADED AND DRAINED ROAD
- SOIL SURFACE ROAD
- GRAVEL OR STONE ROAD
- BITUMINOUS ROAD
- PAVED ROAD
- DIVIDED ROAD
- TRUNK HIGHWAY UNDER CONSTRUCTION
- ROADS IN UNINCORPORATED COMPACTS, EXTENSIONS OF LOCAL ROADS (NOT F.A.S.) WITHIN MUNICIPALITIES AND FRONTAGE ROADS
- GRADE SEPARATION
- FULL TRAFFIC INTERCHANGE
- PARTIAL TRAFFIC INTERCHANGES INDICATING TRAFFIC MOVEMENT

## ROAD SYSTEM DESIGNATIONS

- INTERSTATE TRUNK HIGHWAY
- U.S. NUMBERED TRUNK HIGHWAY
- STATE NUMBERED TRUNK HIGHWAY
- COUNTY STATE AID HIGHWAY
- COUNTY ROAD
- COUNTY STATE AID IN ADJACENT COUNTY
- TERMINATION OF DESIGNATED ROUTE

## BOUNDARIES

- NATIONAL OR STATE
- COUNTY
- CIVIL TOWNSHIP
- CONGRESSIONAL TOWNSHIP (U.S. LAND)
- CORPORATE LINE
- SECTION LINE
- CONGESTED AREA
- INDIAN RESERVATION

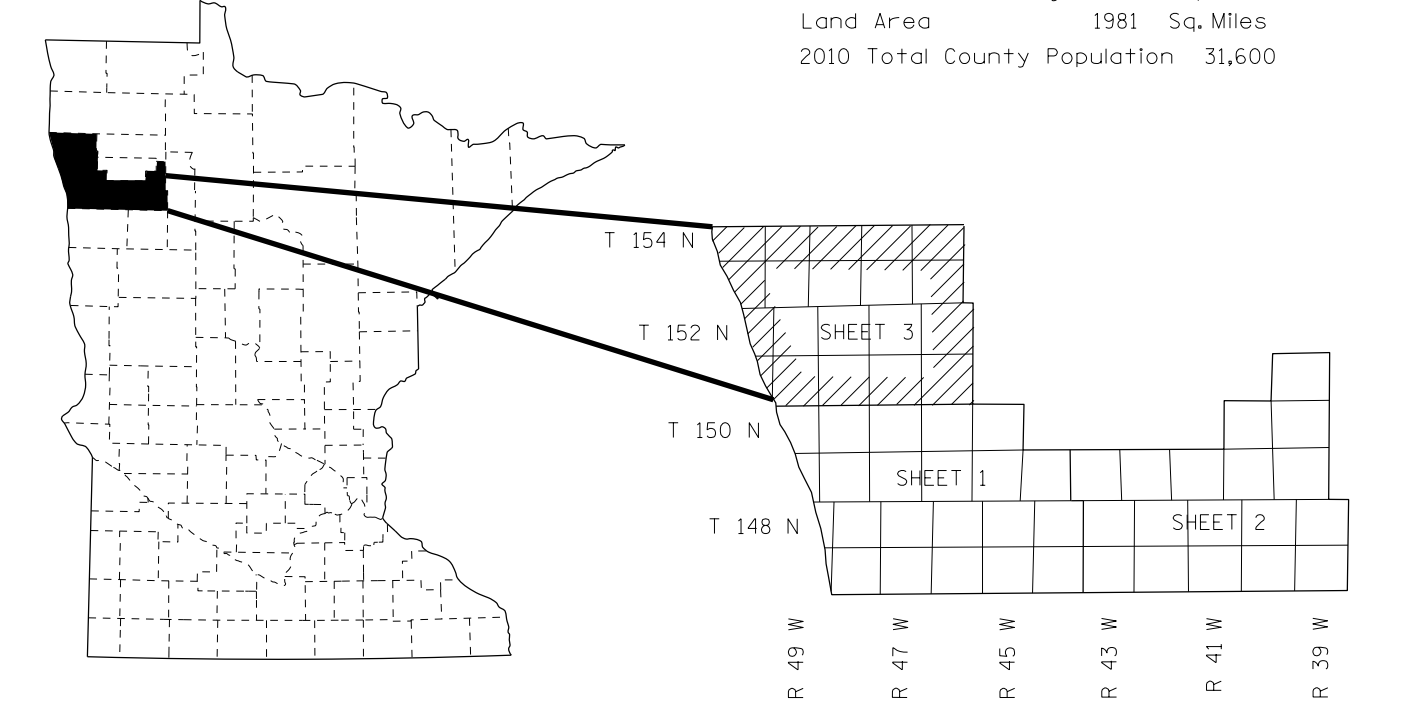
## DRAINAGE

- INTERMITTENT STREAM
- NARROW STREAM
- WIDE STREAMS
- MARSH OR SWAMP LAND
- DRAINAGE DITCH
- LAKE OR POND

## CITY CENTERS

- STATE CAPITAL
- COUNTY SEAT
- CITY CENTER
- INCORPORATED CITY (GENERALIZED)

Outline Map of Minnesota showing location of the County within the State.   
 Outline Map of the County. Shaded portion is area delineated on this sheet.   
 Area of this County 1996: 54 Miles Land Area 1981: 54 Miles Land Area 2000 Total County Population: 33,600



NOTE: FOR DETAIL OF COUNTY STATE AID HIGHWAYS AND COUNTY ROADS IN INCORPORATED PLACES, SEE MAPS OF MUNICIPALITIES.