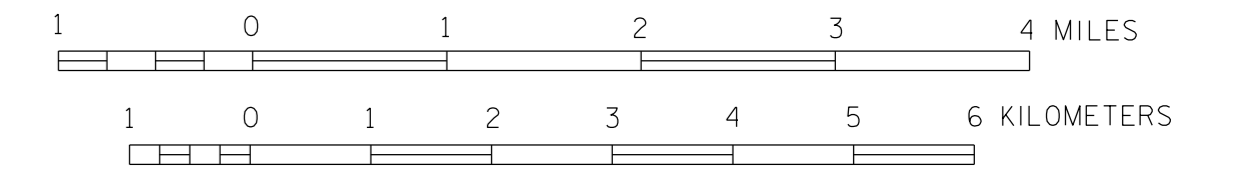


BICYCLE MAP CLEARWATER COUNTY MINNESOTA

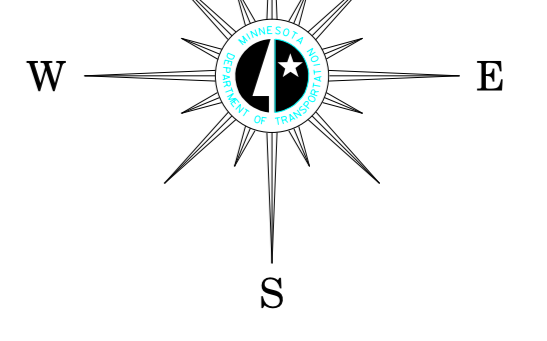
PREPARED BY THE
MINNESOTA DEPARTMENT OF TRANSPORTATION
OFFICE OF TRANSPORTATION SYSTEM MANAGEMENT



2016
BASIC DATA - 2015

Projection: Minnesota Coordinate System
North Zone
Lambert Conformal Conic

North American Datum of 1983



LEGEND

- | | | |
|--|--|---|
| (Roadways with shoulders less than 4 feet) | 0-750 (Fewer than 3 cars / min) | (Roadways with shoulders greater than 4 feet) |
| (Yellow line) | 751-2000 (3 cars / min) | (Orange line) |
| (Orange line) | 2001-10,000 (12 cars / min) | (Red line) |
| (Red line) | 10,000+ (24+ cars / min) | (Dark red line) |
| (Grey line) | Gravel Roadway | |
| (Green line) | Federal, State and Regional Bicycle Trails | |
| (Light green line) | Minnesota River Trail | |
| (Purple line) | Interstate / Bicycles Prohibited | |
| (Light blue area) | State or National Forests | |

ROAD AND ROADWAY FEATURES

- PROJECTED ROAD
- PRIMITIVE ROAD
- UNIMPROVED ROAD
- GRADED AND DRAINED ROAD
- SOIL SURFACE ROAD
- GRAVEL OR STONE ROAD
- BITUMINOUS ROAD
- PAVED ROAD
- DIVIDED ROAD
- TRUNK HIGHWAY UNDER CONSTRUCTION
- ROADS IN UNINCORPORATED COMPACTS, EXTENSIONS OF LOCAL ROADS (NOT F.A.S.A. WITHIN MUNICIPALITIES AND FRONTAGE ROADS)
- GRADE SEPARATION
- FULL TRAFFIC INTERCHANGE
- PARTIAL TRAFFIC INTERCHANGES INDICATING TRAFFIC MOVEMENT

ROAD SYSTEM DESIGNATIONS

- INTERSTATE TRUNK HIGHWAY
- U.S. NUMBERED TRUNK HIGHWAY
- STATE NUMBERED TRUNK HIGHWAY
- COUNTY STATE AID HIGHWAY
- COUNTY ROAD
- COUNTY STATE AID IN ADJOINING COUNTY
- TERMINATION OF DESIGNATED ROUTE

BOUNDARIES

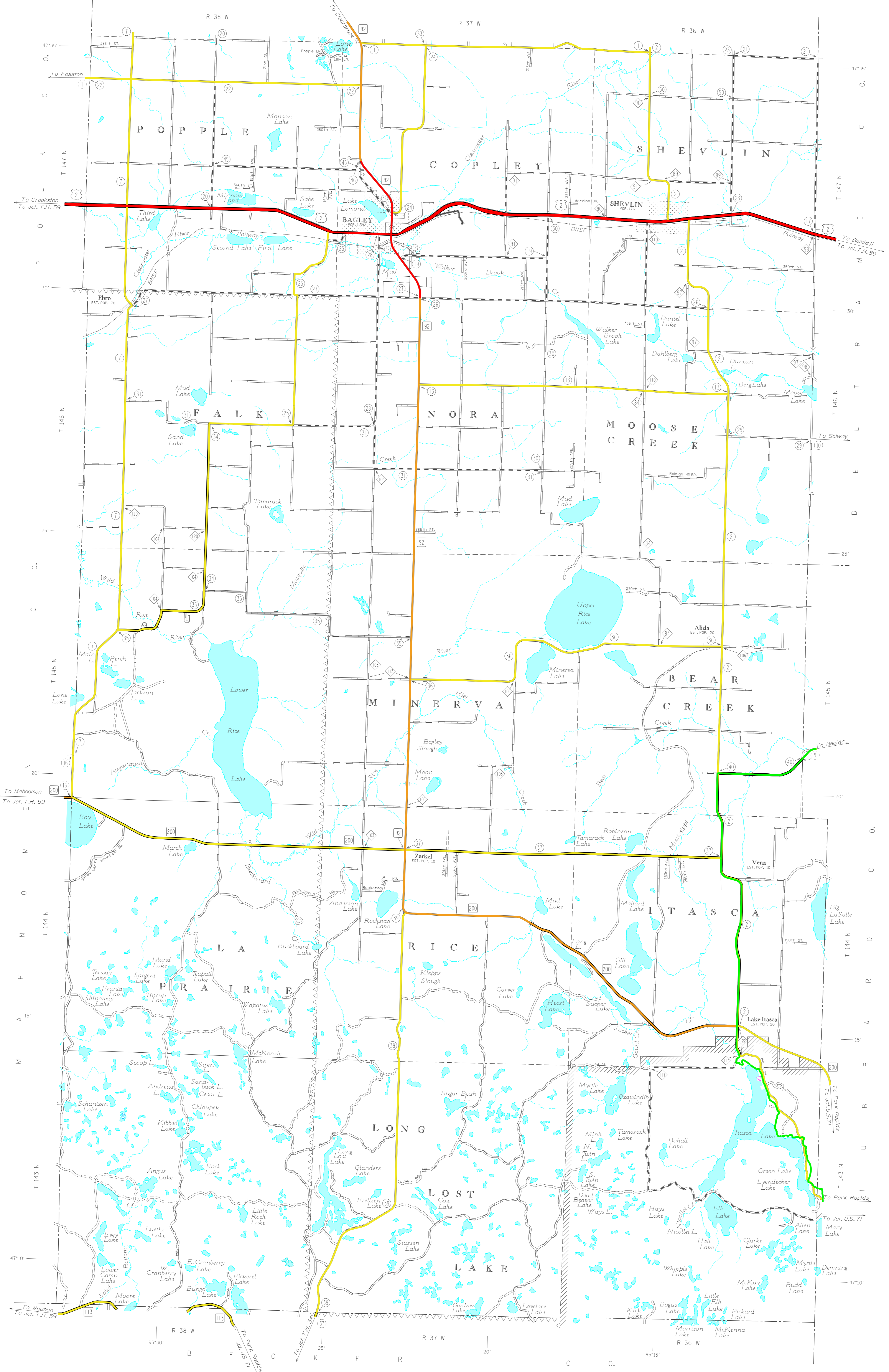
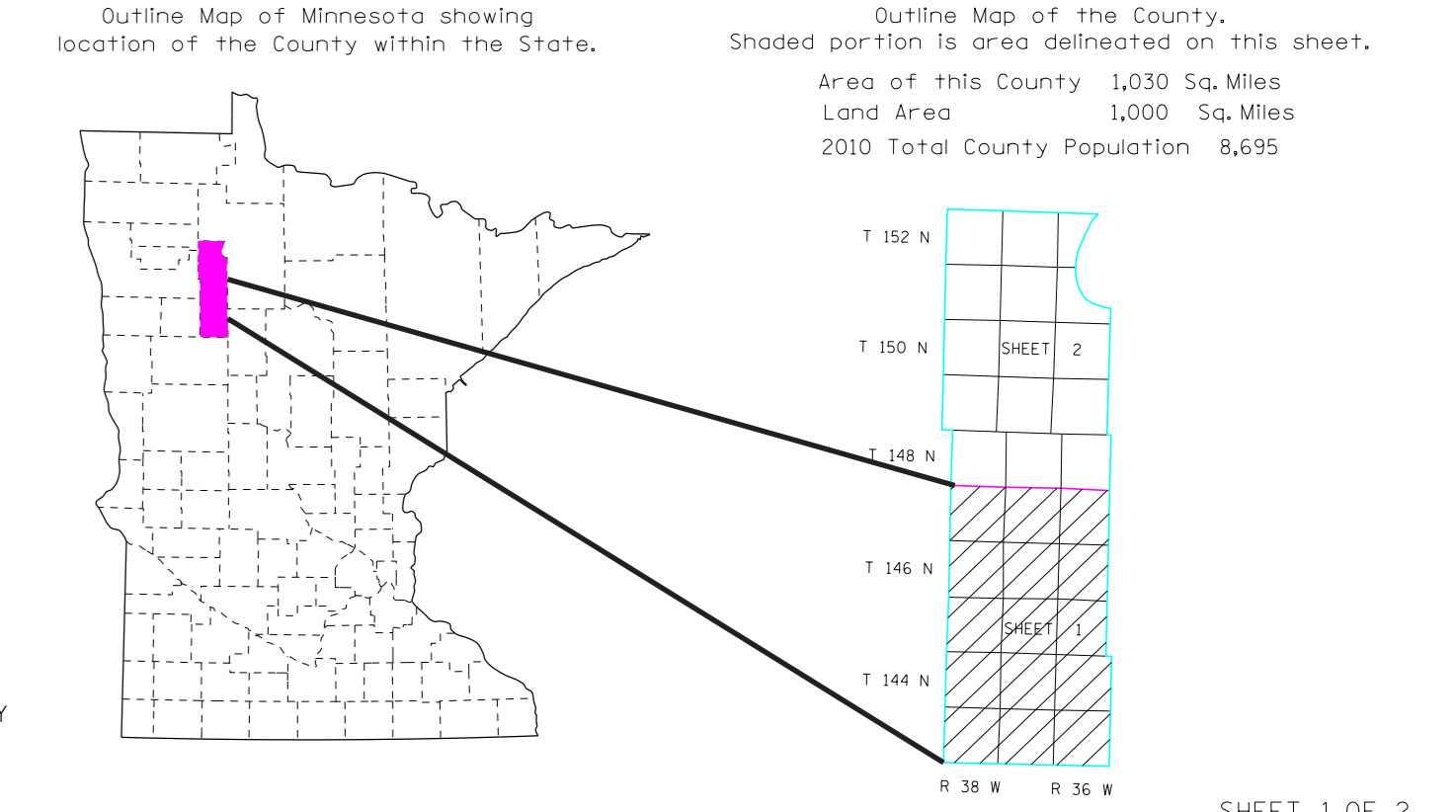
- NATIONAL OR STATE
- COUNTY
- CIVIL TOWNSHIP
- CONGRESSIONAL TOWNSHIP (U.S. LAND)
- CORPORATE LINE
- SECTION LINE
- CONGESTED AREA
- INDIAN RESERVATION

DRAINAGE

- INTERMITTENT STREAM
- NARROW STREAM
- WIDE STREAMS
- MARSH OR SWAMP LAND
- DRAINAGE DITCH
- LAKE OR POND

CITY CENTERS

- STATE CAPITAL
- COUNTY SEAT
- CITY CENTER
- INCORPORATED CITY (GENERALIZED)



NOTE: FOR DETAIL OF COUNTY STATE AID HIGHWAYS AND COUNTY ROADS IN INCORPORATED PLACES, SEE MAPS OF MUNICIPALITIES.