

C.S.A.H. 13 DUAL LEFT TURN LANE ADDITION

LAYOUT HISTORY

September 2007
 Layout 1B was prepared in 2006 for improvements in the area of I-94 and C.S.A.H. 13 in Washington County. The improvements shown on Layout 1B are currently in final design and will be constructed in 2008.

Since approval of Layout 1B, the City of Oakdale has expressed interest in slightly expanding the project by adding a second NB LTL on C.S.A.H. 13 at 3rd Street North. This addition will alleviate the occasional back-ups of left turning cars into the through lane of C.S.A.H. 13.

This second NB LTL was shown on the layout flip, submitted for approval as Layout No. 1C.

Comments were received on October 4, 2007 for Layout No. 1C and the following changes were made to the layout:
 The outside turning radius for the NB-62 turning path has been increased to 55 feet, with a maximum steering angle of 23.0 degrees.
 The north end of the median near station 432+70 has been extended 25 feet and flared on both sides to better match the two turning movements.

The revised layout flip is submitted for approval as Layout No. 1D.

LAYOUT PORTION NO. 1D
 IN OAKDALE
 FROM 460 FT. SOUTH OF 3RD STREET NORTH
 TO 75 FT. SOUTH OF 3RD STREET NORTH
 Prepared September 21, 2007 Scales: Hor. 1 IN = 100 FT
 By Short Elliott Hendrickson, Inc.

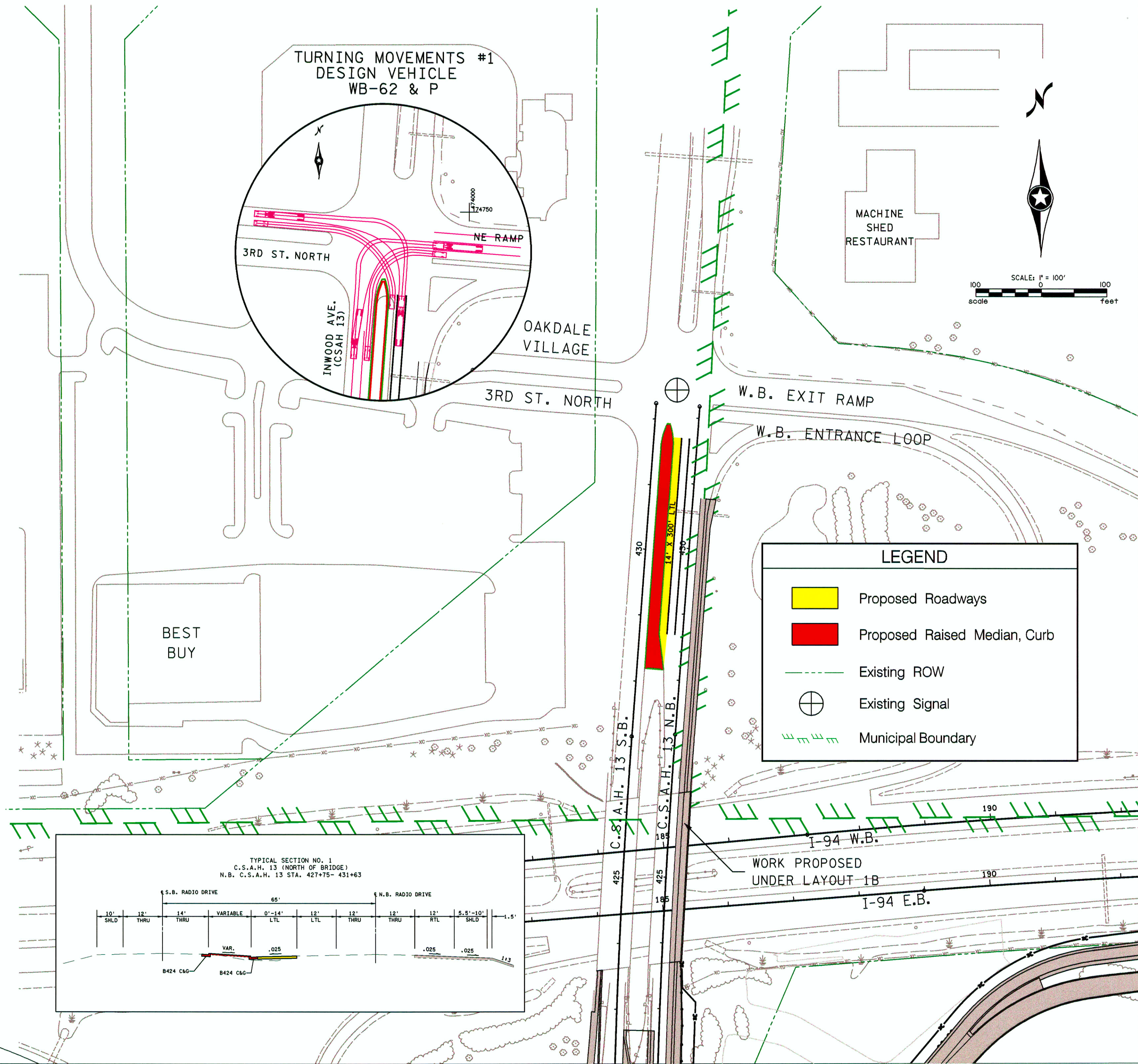
The alignment and this map are tentative and subject to change without notice.	Staff approved Date: <u>10/04/2007</u>	The traffic volume shown are estimated for year: <u>2020</u>
	Layout Previously submitted on: <u>Feb. 14, 2007</u>	Prepared: <u>2006</u>

S.P. 8282-105 T.H. 94 A.U. I90504 PPMS Activity 1140
 S.P. T.H. A.U. PPMS Activity
 Copy To: Staff For: Approval 10/30/2007
SAI:\P\Woodb\070700\woodb0707_102.dgn

LAYOUT FLAP APPROVAL

Prepared By: [Signature] 10/14/07
 Reviewed By: [Signature] 10/14/07
 Approved By: [Signature] 10/14/07
 Approved By: [Signature] 10/25/07

This map is certified to be correct by the engineer or other duly qualified person who has signed and sealed this map as required by the laws of the State of Minnesota. It is filed by me as required by the laws of the State of Minnesota.
 Printed Name: Jason E. Schmitt Title: DATE: 10/25/2007



LEGEND

- Proposed Roadways
- Proposed Raised Median, Curb
- Existing ROW
- ⊕ Existing Signal
- Municipal Boundary

