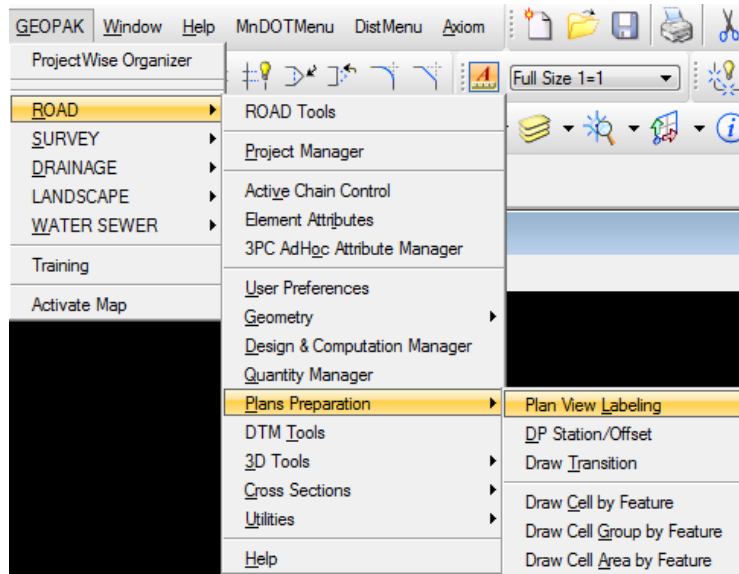




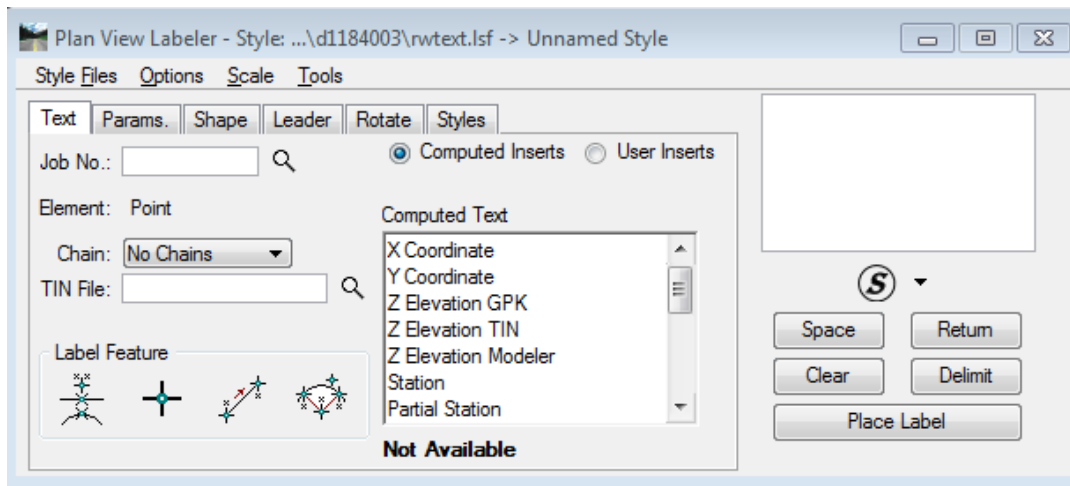
TECH SHEET PLAN VIEW LABELING

PLAN VIEW LABELING

1. While in the dgn you want to Label select **GEOPAK > ROAD > Plans Preparation > Plan View Labeling** or select the icon.

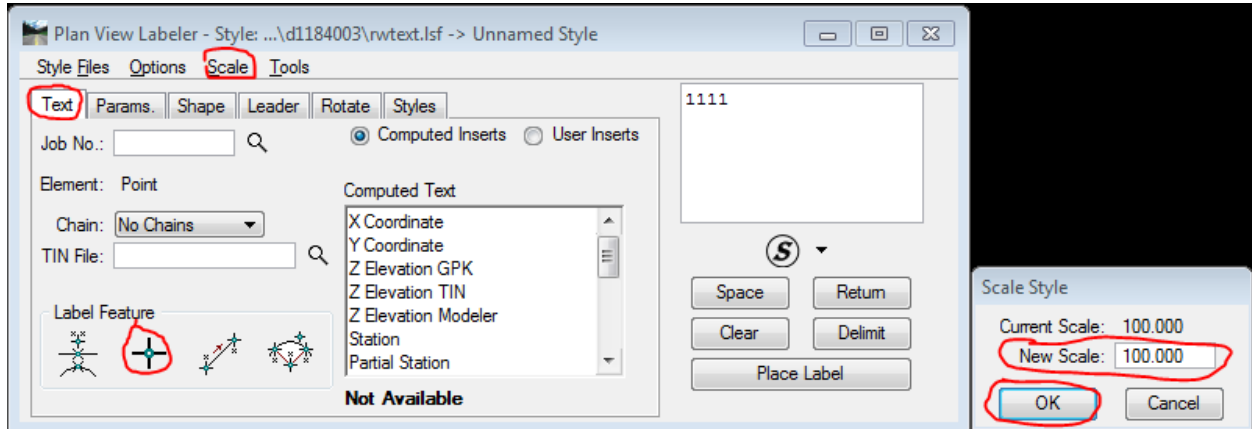


This opens the following dialog

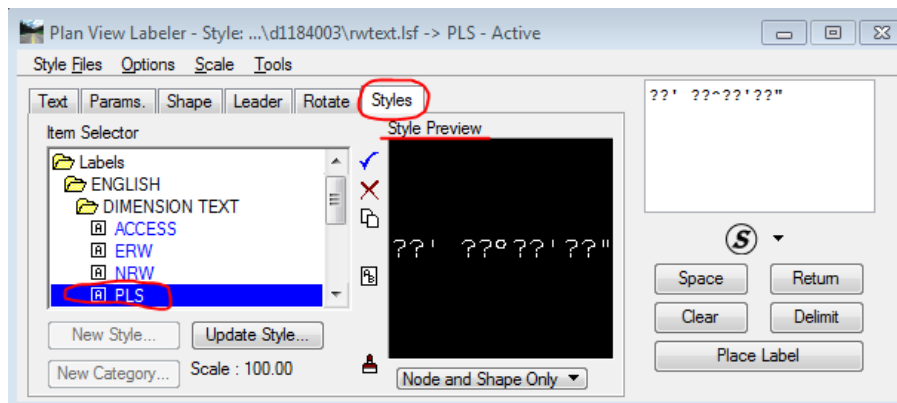


2. A Configuration variable automatically loads pw:\\pw8i.ad.dot.state.mn.us:cadp\Documents\CADDStandards\MnDOTStandards\DOT_GEOPAK\reference\rwtext.lsf

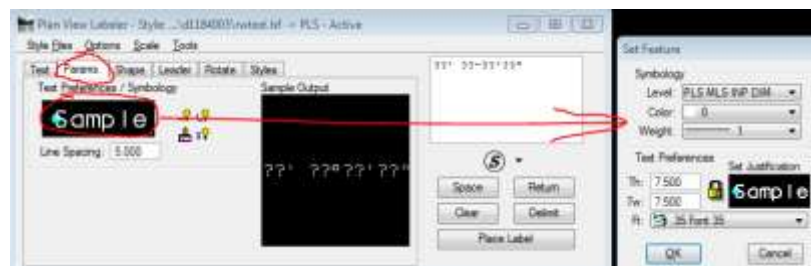
- Look at the text setting. In many cases the data point option is used as shown below for the location of where to place the label. However, other options available are GEOPAK or MS element, 2 gpk point line, 3 point gpk arc. Also the labeler can be used for locations off of a chain. You also need to set the scale for the labels. Select **Scale > Change Scale**. Type in the scale for your drawing and select **OK**.

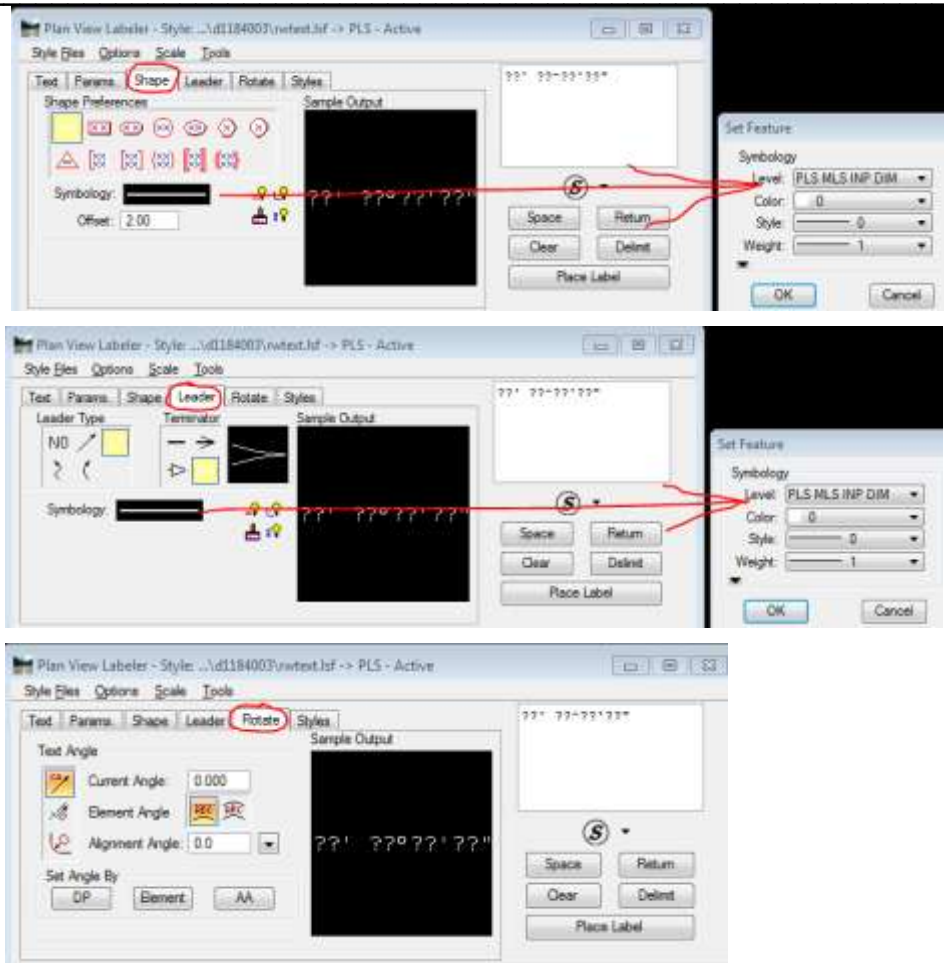


- The following example is of Labels previously stored with Leaders and Terminators. Select the label you want to use. A single mouse click places the label in the Style Preview Window. A double mouse click places the label in Place Label Window. In this window you can then edit the text.

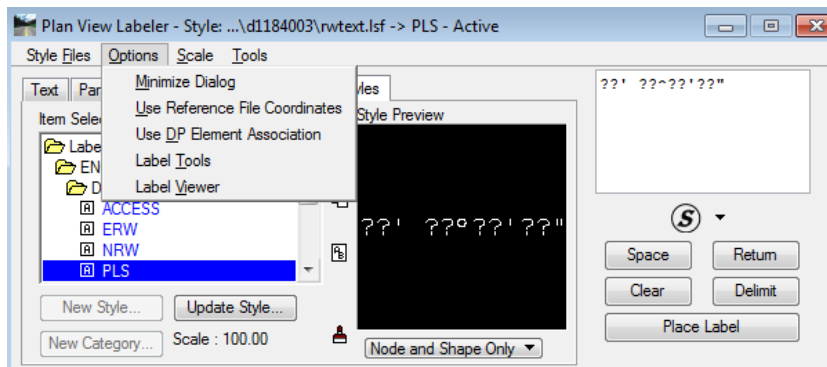


- The following dialogs are where you can change/view the Parmas, Shape, Leader, and Rotate.





6. The Plan View Label Control dialog is located when you Select **Options > Label Tools**. These Tools are very useful for modify labels with one Mouse Click.



- Rotate Label To Active Angle
- Rotate Label By Element Angle
- Rotate Label By 2 Data Points
- Rotate Label 180 degrees
- Rotate Label By Alignment Angle
- Increase Text Size
- Decrease Text Size
- Data Point ID Label Location
- ID Element
- 2 GPK Point Line
- 3 GPK Point Line
- Edit Label
- Move Label
- Extract Label (Copy Symbology)
- Place Label
- Restore Label Dialog



Rotate Label to Active Angle: Utilized to rotate a label, either before or during placement, to the active angle.

Rotate Label By Element Angle: Utilized to rotate a label, either before or during placement, to the active angle.

Rotate Label by Two Data Points: Utilized to rotate a label, either before or during placement, to an angle between two data points. GEOPAK prompts for the two data points.

Rotate Label 180: Utilized to rotate a label, either before or during placement, 180 degrees from the current rotation of the label.

Rotate Label by Alignment Angle: Utilized to rotate a label, either before or during placement, at an angle relative to a Chain. First, in the Text tab of the main dialog, specify the Job No. and the Chain.

Increase Text Size: Each press of this button increases the text size of the dynamic label by the specified scale in the dialog below. In this example, the text increases 20% each time it's pressed.

Decrease Text Size: Each press of this button decreases the text size of the dynamic label by the specified scale in the dialog below. In this example, the text decreases 30% each time it's pressed.

Data Point: This button is a shortcut for the DP button located on the main dialog, and is extremely useful when the main dialog is minimized. Data points are utilized to identify location of labels and the source of computation for point based computed text inserts. This icon is not supported in the drainage labeler.

Identify Element: This button is a shortcut for the Identify Element on the main dialog, and is extremely useful when the main dialog is minimized and labels are to be applied to multiple elements. This icon is not supported in the drainage labeler.

- The Plan View Label View dialog is located when you select **Options > Label View**. The Place Label button is the same as in the Plan View Labeler dialog. The Automatic Label button will use the label the same as the previous placed label. Is very useful when Labeling Station, offset, coordinates etc.

